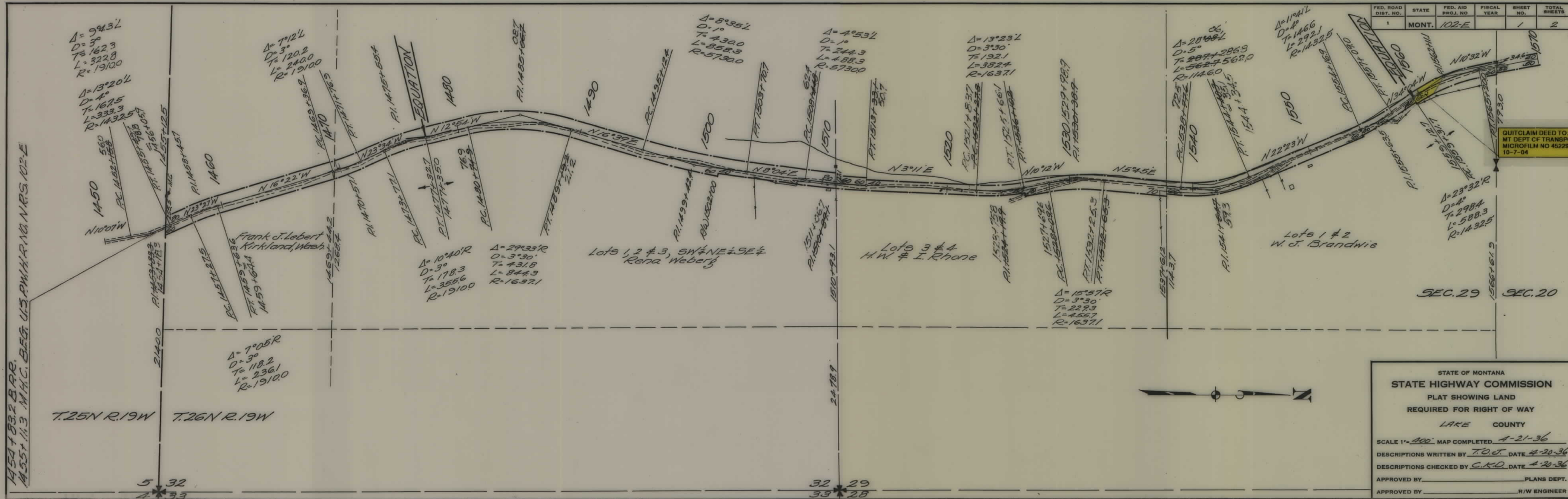


**PLANS
NOT
TO
SCALE**

1454+83.2 BARR.
1455+14.3 M.H.C. BEG. U.S. P.W.H.R.N.D. NRS. 102-E



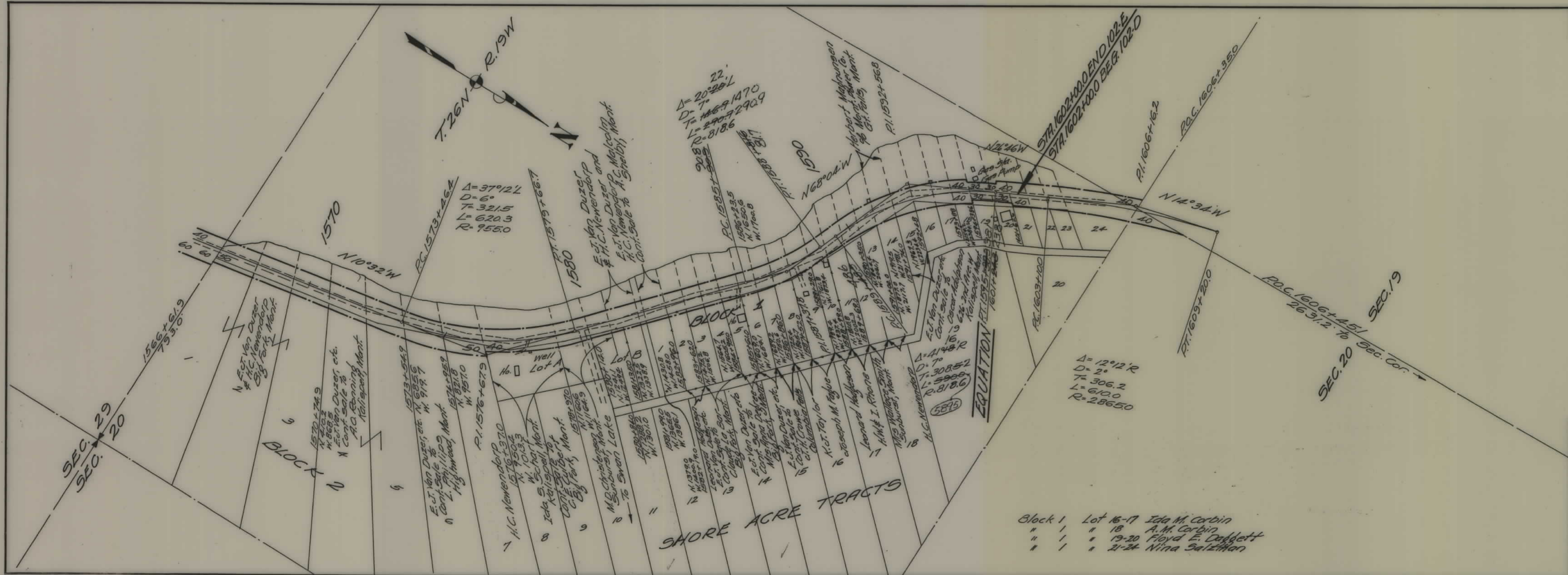
FED. ROAD DIST. NO.	STATE	FED. AID PROJ. NO.	FISCAL YEAR	SHEET NO.	TOTAL SHEETS
1	MONT.	102-E		1	2

QUITCLAIM DEED TO
MT DEPT OF TRANSPORTATION
MICROFILM NO 452295
10-7-04

STATE OF MONTANA
STATE HIGHWAY COMMISSION
PLAT SHOWING LAND
REQUIRED FOR RIGHT OF WAY
LAKE COUNTY

SCALE 1"=400'. MAP COMPLETED 4-21-36
DESCRIPTIONS WRITTEN BY T.O.J. DATE 4-20-36
DESCRIPTIONS CHECKED BY C.K.D. DATE 4-20-36

APPROVED BY _____ PLANS DEPT.
APPROVED BY _____ R/W ENGINEER



FED. ROAD DIST. NO.	STATE	FED. AID PROJ. NO.	FISCAL YEAR	SHEET NO.	TOTAL SHEETS
1	MONT.	102-E		2	2

STATE OF MONTANA
STATE HIGHWAY COMMISSION
PLAT SHOWING LAND
REQUIRED FOR RIGHT OF WAY
LAKE COUNTY

SCALE 1"=200' MAP COMPLETED 4-21-36
DESCRIPTIONS WRITTEN BY C.R.D. DATE 4-20-36
DESCRIPTIONS CHECKED BY T.O.J. DATE 4-20-36
APPROVED BY _____ PLANS DEPT.
APPROVED BY _____ R/W ENGINEER

Block 1 Lot 16-17 Ida M. Corbin
" 1 " 18 A.M. Corbin
" 1 " 19-20 Floyd E. Dufflett
" 1 " 21-24 Nina Salzman