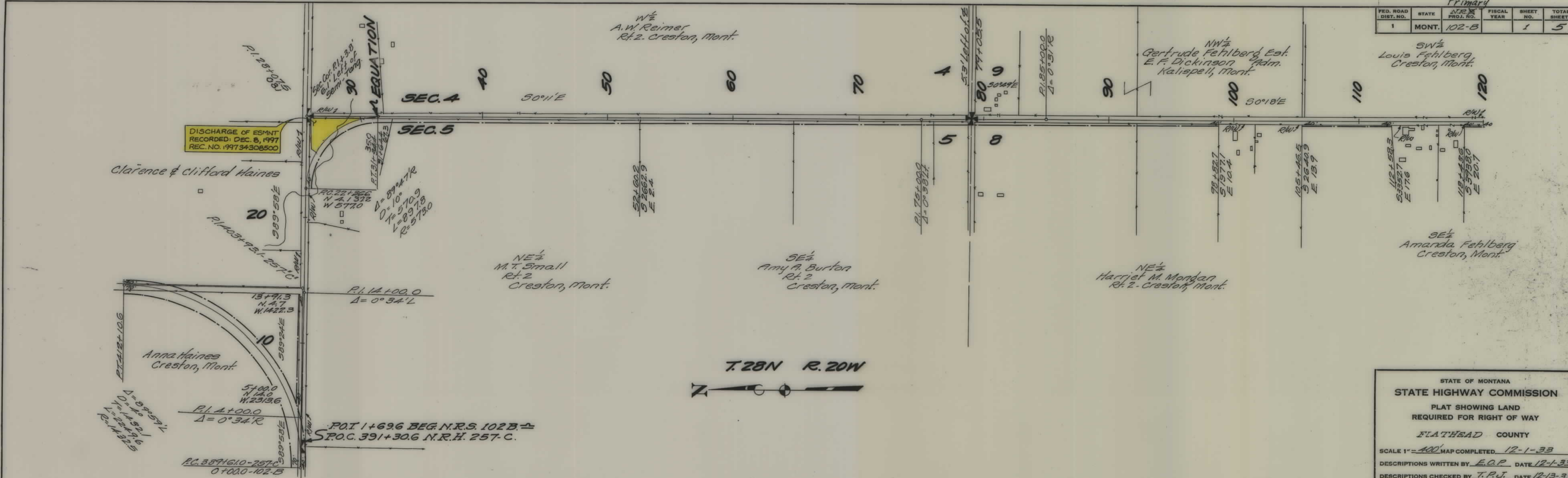
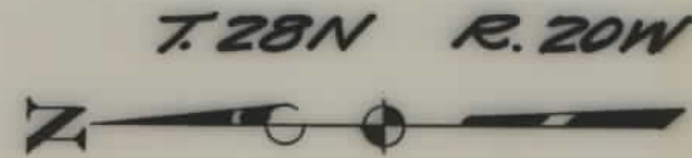


PLANS  
NOT  
TO  
SCALE

Primary					
FED. ROAD DIST. NO.	STATE	PROJ. NO.	FISCAL YEAR	SHEET NO.	TOTAL SHEETS
1	MONT.	102-B		1	5



DISCHARGE OF ESMNT  
RECORDED: DEC. 8, 1997  
REC. NO. 99734308500

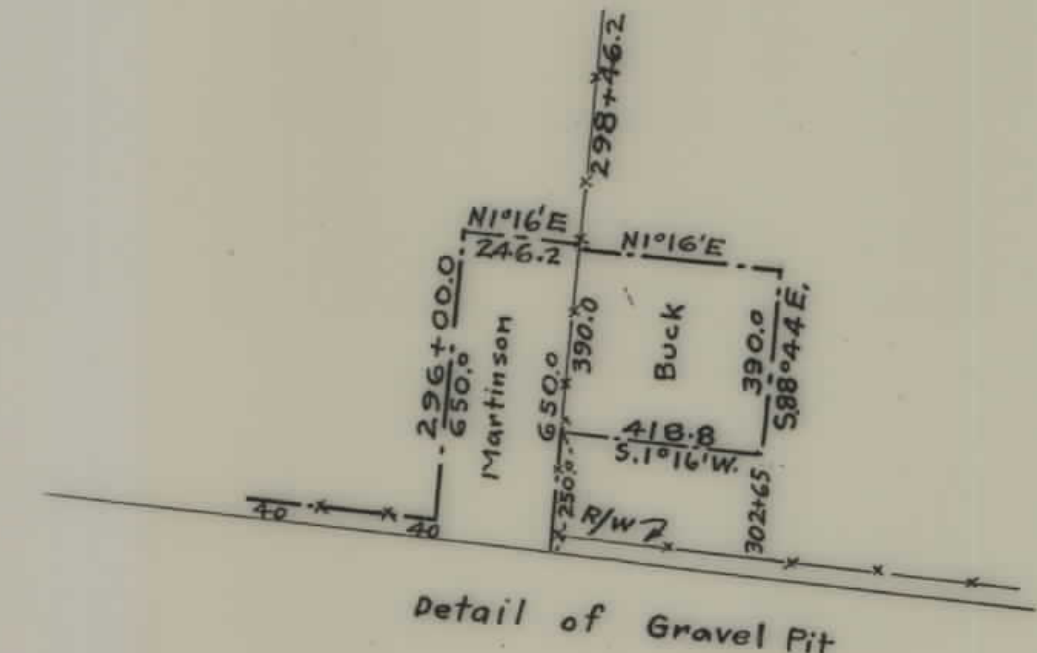
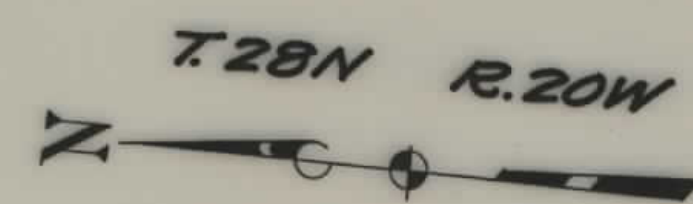
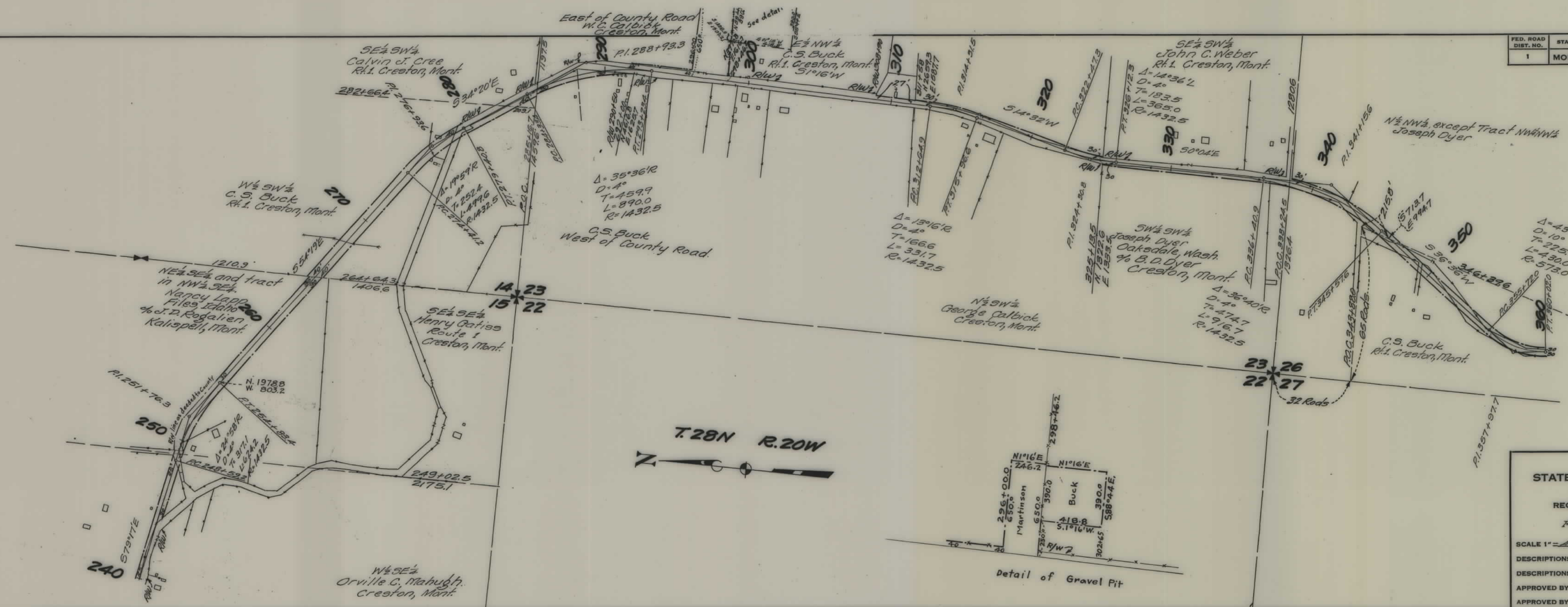


STATE OF MONTANA  
STATE HIGHWAY COMMISSION  
PLAT SHOWING LAND  
REQUIRED FOR RIGHT OF WAY  
FLATHEAD COUNTY

SCALE 1" = 400' MAP COMPLETED 12-1-33  
 DESCRIPTIONS WRITTEN BY E.O.P. DATE 12-1-33  
 DESCRIPTIONS CHECKED BY T.P.J. DATE 12-13-33  
 APPROVED BY \_\_\_\_\_ PLANS DEPT.  
 APPROVED BY \_\_\_\_\_ R/W ENGINEER



FED. ROAD DIST. NO.	STATE	PRJ. NO.	FISCAL YEAR	SHEET NO.	TOTAL SHEETS
1	MONT.	102-B		3	5

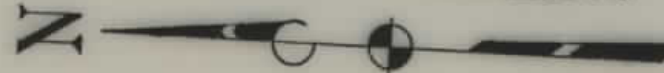


STATE OF MONTANA  
 STATE HIGHWAY COMMISSION  
 PLAT SHOWING LAND  
 REQUIRED FOR RIGHT OF WAY  
 FLATHEAD COUNTY

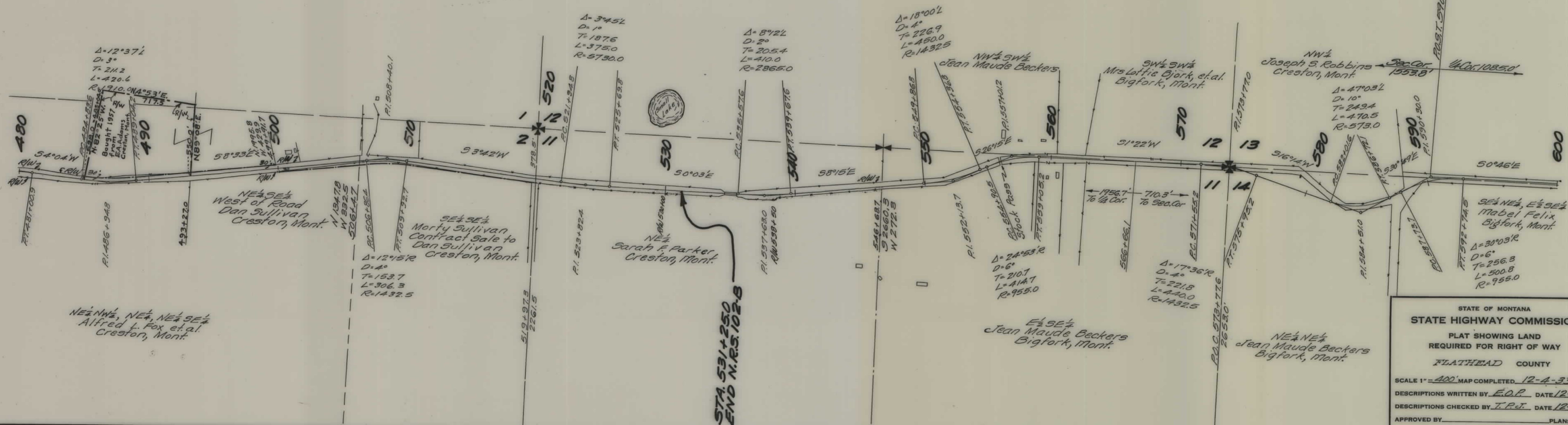
SCALE 1" = 400' MAP COMPLETED 12-2-33  
 DESCRIPTIONS WRITTEN BY E.O.P. DATE 12-2-33  
 DESCRIPTIONS CHECKED BY T.P.J. DATE 12-13-33  
 APPROVED BY \_\_\_\_\_ PLANS DEPT.  
 APPROVED BY \_\_\_\_\_ R/W ENGINEER



T. 27N R. 20W



FED. ROAD DIST. NO.	STATE	PROJ. NO.	FISCAL YEAR	SHEET NO.	TOTAL SHEETS
1	MONT.	102-B		5	5



STA. 531+25.0  
END N.R.S. 102-B

STATE OF MONTANA  
STATE HIGHWAY COMMISSION  
PLAT SHOWING LAND  
REQUIRED FOR RIGHT OF WAY  
FLATHEAD COUNTY  
SCALE 1" = 400' MAP COMPLETED 12-4-33  
DESCRIPTIONS WRITTEN BY E.O.P. DATE 12-5-33  
DESCRIPTIONS CHECKED BY T.P.J. DATE 12-13-33  
APPROVED BY \_\_\_\_\_ PLANS DEPT.  
APPROVED BY \_\_\_\_\_ R/W ENGINEER