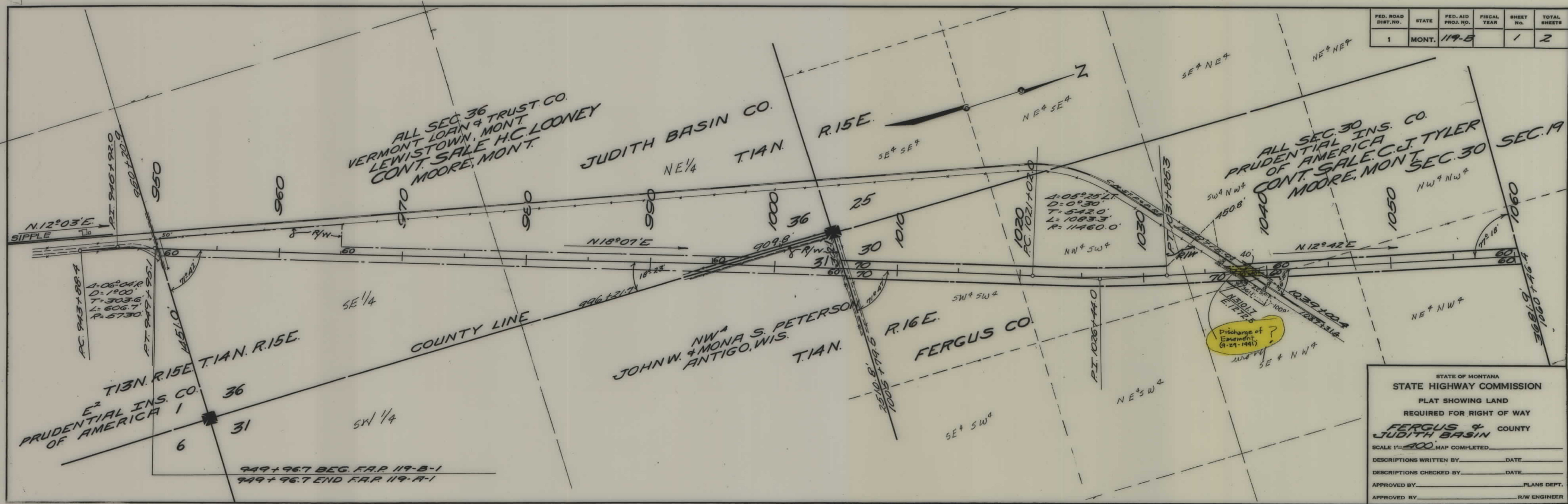


PLANS  
NOT  
TO  
SCALE

FED. ROAD DIST. NO.	STATE	FED. AID PROJ. NO.	FISCAL YEAR	SHEET NO.	TOTAL SHEETS
1	MONT.	119-B		1	2



STATE OF MONTANA  
STATE HIGHWAY COMMISSION  
PLAT SHOWING LAND  
REQUIRED FOR RIGHT OF WAY  
FERGUS & JUDITH BASIN COUNTY  
SCALE 1"=400' MAP COMPLETED \_\_\_\_\_  
DESCRIPTIONS WRITTEN BY \_\_\_\_\_ DATE \_\_\_\_\_  
DESCRIPTIONS CHECKED BY \_\_\_\_\_ DATE \_\_\_\_\_  
APPROVED BY \_\_\_\_\_ PLANS DEPT. \_\_\_\_\_  
APPROVED BY \_\_\_\_\_ R/W ENGINEER \_\_\_\_\_

FED. ROAD DIST. NO.	STATE	FED. AID PROJ. NO.	FISCAL YEAR	SHEET No.	TOTAL SHEETS
1	MONT.	119B		2	2

T. 14 N. - R. 16 E.



ALL SEC. 19  
PRUDENTIAL INS. CO. OF AMERICA  
CONT. SALE TO C.J. TYLER  
MOORE, MONT.

W<sup>2</sup>  
AMELIA OLSEN  
516 PARK AVE.  
HELENA, MONT.

SEC. 19

SEC. 18

$\Delta = 13^{\circ} 46' 17''$   
 $D = 1^{\circ} 00'$   
 $T = 691.7'$   
 $L = 1376.7'$   
 $R = 5730.0'$

SEC. 30

SEC. 19

SEC. 18

SE<sup>4</sup>, S<sup>2</sup>NE<sup>4</sup>  
WILLIAM R. SHARP  
MOORE, MONT.

GRACE  
A. KOCH  
ET AL.  
DENTON  
MONT.

STATE OF MONTANA  
STATE HIGHWAY COMMISSION  
PLAT SHOWING LAND  
REQUIRED FOR RIGHT OF WAY  
*FERGUS* COUNTY

SCALE 1"= 400' MAP COMPLETED \_\_\_\_\_

DESCRIPTIONS WRITTEN BY \_\_\_\_\_ DATE \_\_\_\_\_

DESCRIPTIONS CHECKED BY \_\_\_\_\_ DATE \_\_\_\_\_

APPROVED BY \_\_\_\_\_ PLANS DEPT. \_\_\_\_\_

APPROVED BY \_\_\_\_\_ R/W ENGINEER \_\_\_\_\_