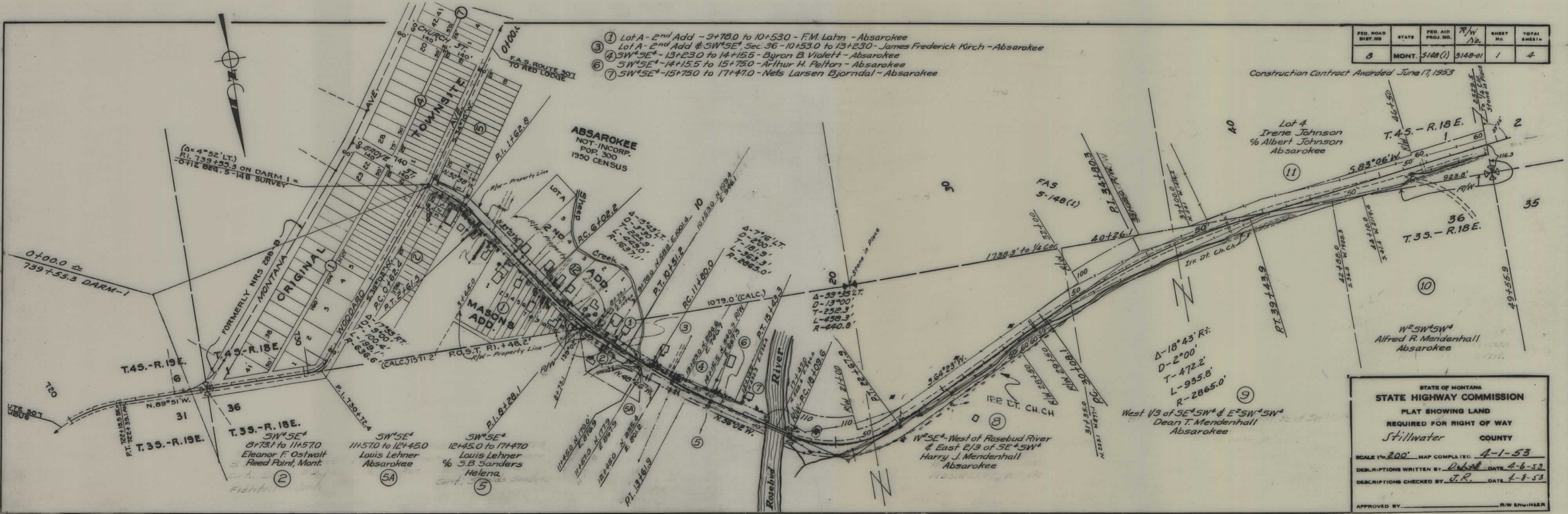


PLANS
NOT
TO
SCALE

FED. ROAD DIST. NO.	STATE	FED. AID PROJ. NO.	R/W No.	SHEET NO.	TOTAL SHEETS
8	MONT.	5148(1)	3148-01	1	4

Construction Contract Awarded June 17, 1953

- ① Lot A-2nd Add ~ 9+78.0 to 10+53.0 - F.M. Lahn - Absarokee
- ② Lot A-2nd Add $\frac{1}{4}$ SW⁴SE⁴, Sec. 36-10+53.0 to 13+23.0 - James Frederick Kirch - Absarokee
- ③ SW⁴SE⁴ - 13+23.0 to 14+15.5 - Byron B. Violet - Absarokee
- ④ SW⁴SE⁴ - 14+15.5 to 15+75.0 - Arthur H. Pelton - Absarokee
- ⑤ SW⁴SE⁴ - 15+75.0 to 17+47.0 - Nels Larsen Bjorndal - Absarokee



STATE OF MONTANA
STATE HIGHWAY COMMISSION

PLAT SHOWING LAND
REQUIRED FOR RIGHT OF WAY
Stillwater COUNTY

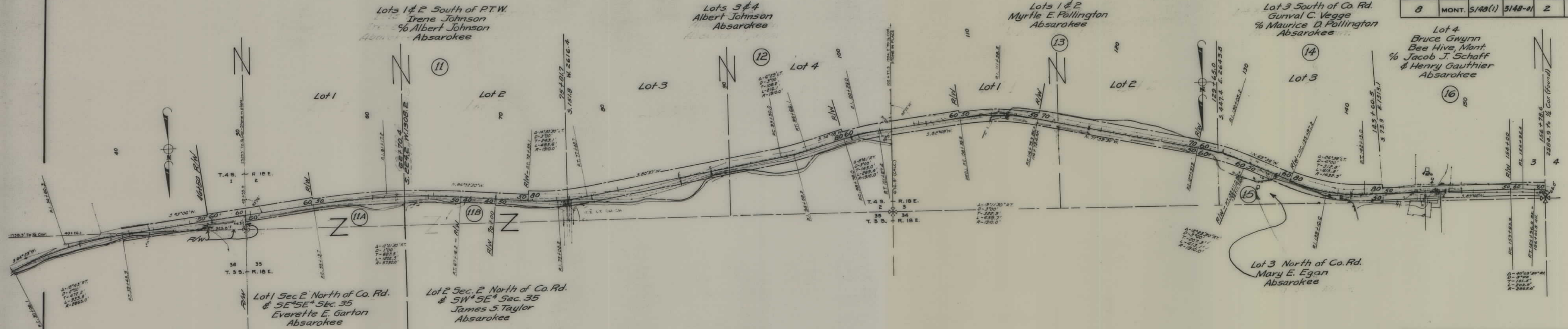
SCALE 1"=200' MAP COMPLETED 4-1-53

DESCRIPTIONS WRITTEN BY D. R. ... DATE 4-6-53

DESCRIPTIONS CHECKED BY J. R. ... DATE 4-8-53

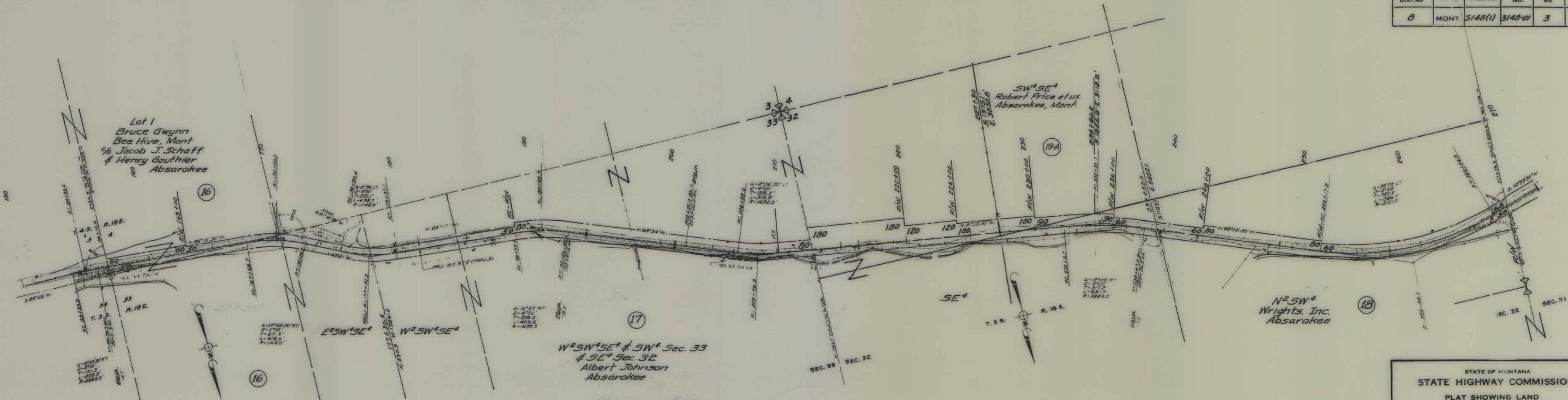
APPROVED BY _____ R/W ENGINEER

FED. ROAD DIST. NO.	STATE	FED. AID PROJ. NO.	R/W NO.	SHEET NO.	TOTAL SHEETS
8	MONT.	5148(1)	3148-01	2	4



STATE OF MONTANA
 STATE HIGHWAY COMMISSION
 PLAT SHOWING LAND
 REQUIRED FOR RIGHT OF WAY
 Stillwater COUNTY
 SCALE 1" = 400' MAP COMPLETED 4-1-53
 DESCRIPTIONS WRITTEN BY D.J.N. DATE 4-6-53
 DESCRIPTIONS CHECKED BY J.R. DATE 4-8-53
 APPROVED BY _____ R/W ENGINEER

FED. ROAD DIST. NO.	ST. / TE.	FED. AID PROJ. NO.	R/W NO.	SHEET NO.	TOTAL SHEETS
8	MONT.	5148(1)	3140-01	3	4

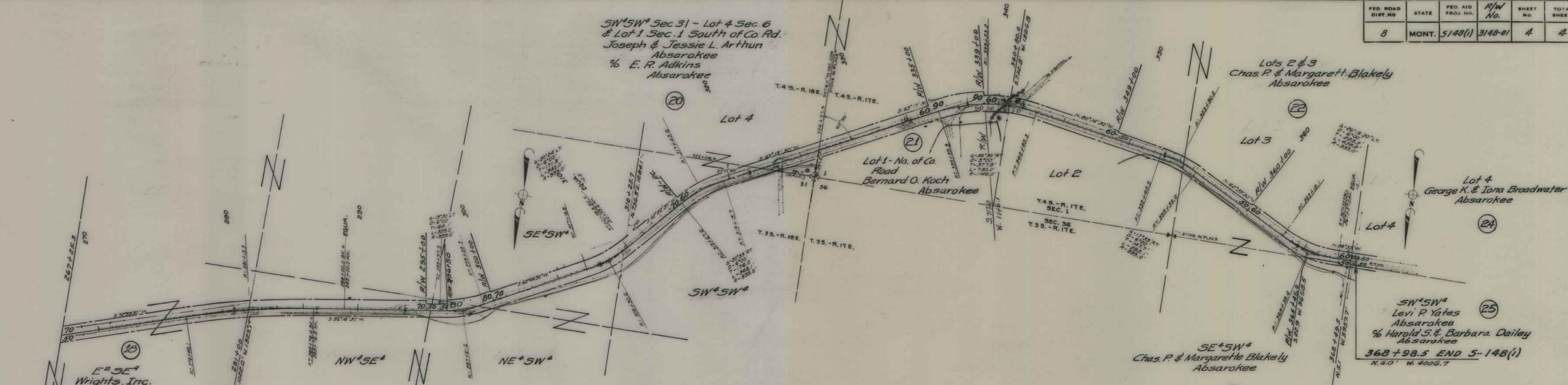


STATE OF MONTANA
STATE HIGHWAY COMMISSION
PLAT SHOWING LAND
REQUIRED FOR RIGHT OF WAY
Stillwater COUNTY

SCALE 1" = 400' MAP COMPLETED 4-2-53
DESCRIPTIONS WRITTEN BY P.J.N. DATE 4-6-53
DESCRIPTIONS CHECKED BY J.R. DATE 4-8-53

APPROVED BY _____ R/W ENGINEER

FED. ROAD DIST. NO.	STATE	FED. AID PROJ. NO.	R/W No.	SHEET NO.	TOTAL SHEETS
8	MONT.	5148(i)	3148-01	4	4



STATE OF MONTANA
STATE HIGHWAY COMMISSION
PLAT SHOWING LAND
REQUIRED FOR RIGHT OF WAY
Stillwater COUNTY

SCALE 1" = 400' MAP COMPLETED 4-2-53
DESCRIPTIONS WRITTEN BY D.J.N. DATE 4-6-53
DESCRIPTIONS CHECKED BY J.R. DATE 4-8-53

APPROVED BY _____ R/W ENGINEER