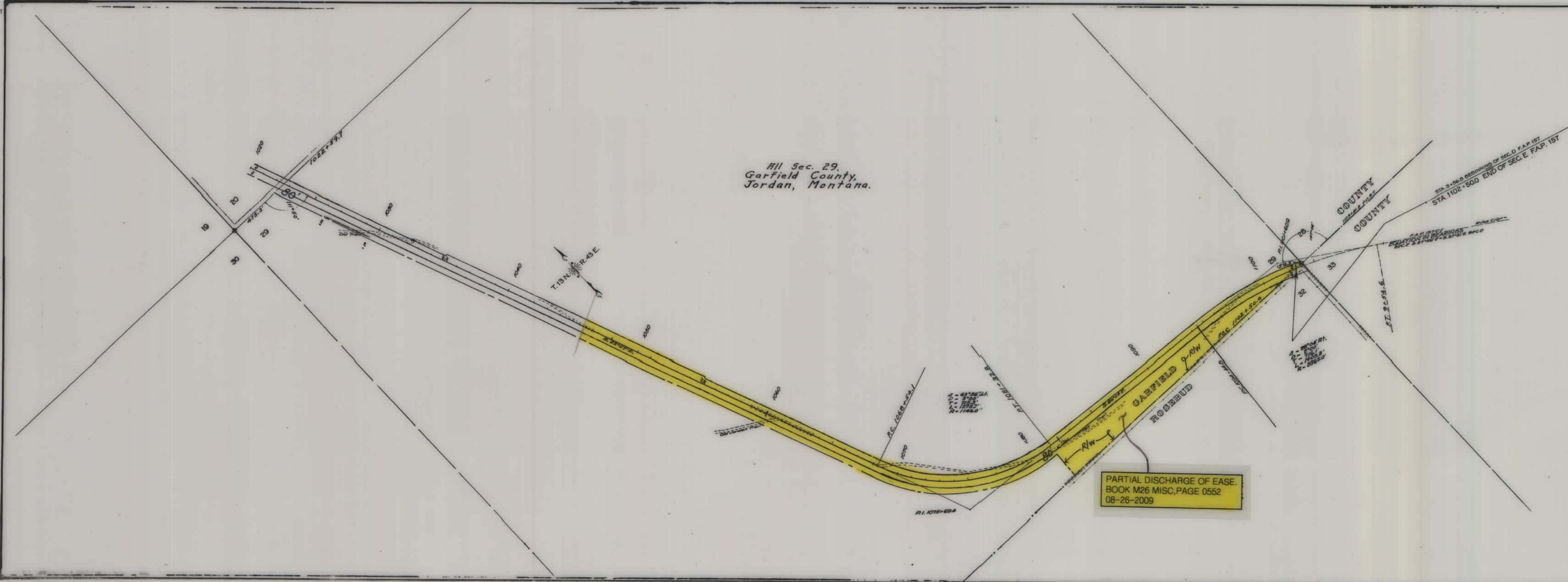


PLANS
NOT
TO
SCALE

FED. ROAD DIST. NO.	STATE	FED. AID PROJ. NO.	SHEET NO.	TOTAL SHEETS
1	MONT.	157-E		



All Sec. 29,
Garfield County,
Jordan, Montana.

PARTIAL DISCHARGE OF EASE.
BOOK M26 MISC, PAGE 0552
08-26-2009

STATE OF MONTANA
STATE HIGHWAY COMMISSION
PLAT SHOWING LAND
REQUIRED FOR RIGHT OF WAY
GARFIELD COUNTY

SCALE 1"= 400. MAP COMPLETED JAN. 1948.
DESCRIPTIONS WRITTEN BY MRC DATE 1-27-48.
DESCRIPTIONS CHECKED BY M.B. DATE 1-27-48.
APPROVED BY _____ PLANS DEPT.
APPROVED BY _____ R/W ENGINEER