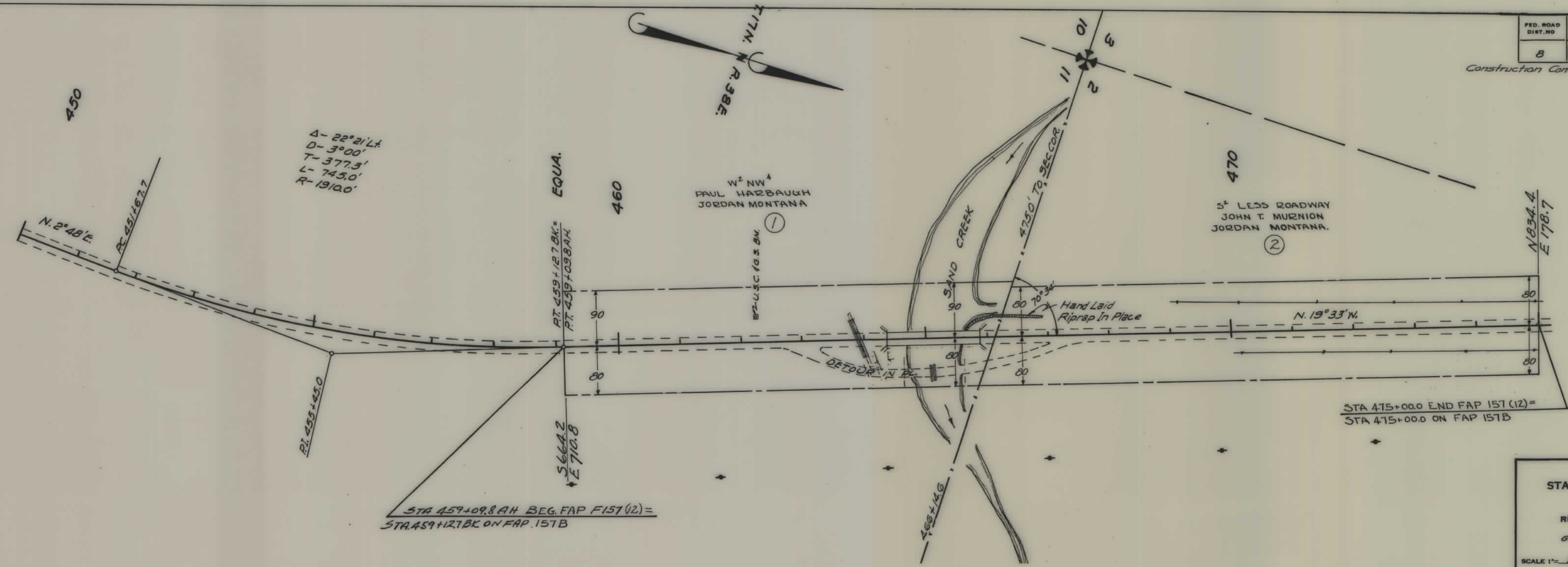


PLANS
NOT
TO
SCALE

FED. ROAD DIST. NO.	STATE	FED. AID PROJ. NO.	R/W NO.	SHEET NO.	TOTAL SHEETS
8	MONT.	FAP 157(12)	1157-12	1	1

Construction Contract Awarded May 20, 1953



Δ- 22° 21' Lt
 D- 3° 00'
 T- 377.5'
 L- 745.0'
 R- 19100'

W² NW⁴
 PAUL HADBAUGH
 JORDAN MONTANA

5² LESS ROADWAY
 JOHN T. MURNION
 JORDAN MONTANA.

STA 459+09.8 AH BEG. FAP F157(12) =
 STA 459+127BK ON FAP 157B

STA 475+00.0 END FAP 157(12) =
 STA 475+00.0 ON FAP 157B

STATE OF MONTANA
 STATE HIGHWAY COMMISSION
 PLAT SHOWING LAND
 REQUIRED FOR RIGHT OF WAY
 GARFIELD COUNTY

SCALE 1" = 100' MAP COMPLETED 6-12-52
 DESCRIPTIONS WRITTEN BY D.J.N. DATE 6-12-52
 DESCRIPTIONS CHECKED BY E.J.P. DATE 6-12-52

APPROVED BY _____ R/W ENGINEER