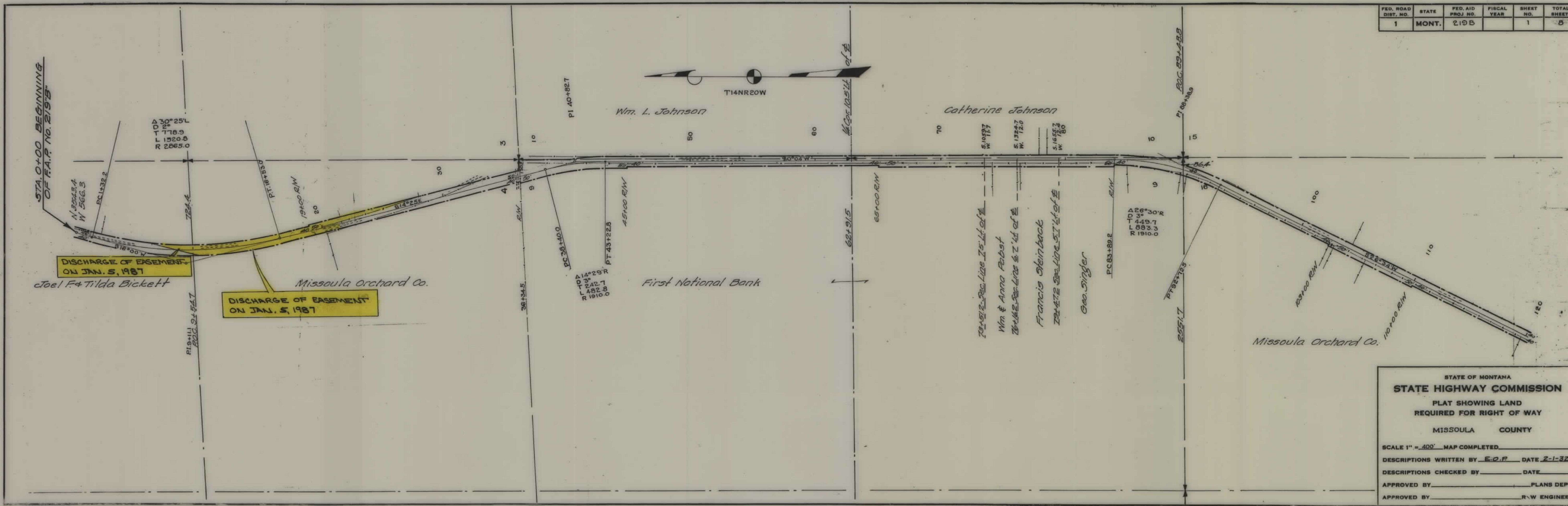


PLANS
NOT
TO
SCALE

FED. ROAD DIST. NO.	STATE	FED. AID PROJ. NO.	FISCAL YEAR	SHEET NO.	TOTAL SHEETS
1	MONT.	219B		1	8

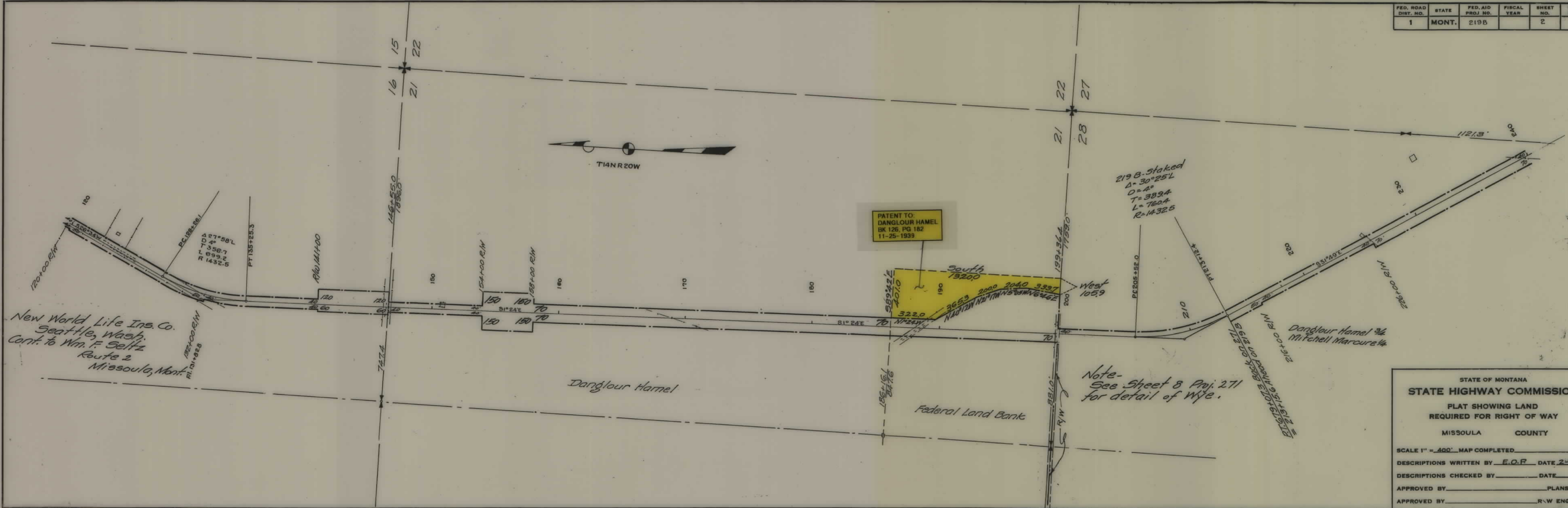


STATE OF MONTANA
STATE HIGHWAY COMMISSION
 PLAT SHOWING LAND
 REQUIRED FOR RIGHT OF WAY
 MISSOULA COUNTY

SCALE 1" = 400' MAP COMPLETED _____
 DESCRIPTIONS WRITTEN BY E.O.P. DATE 2-1-32
 DESCRIPTIONS CHECKED BY _____ DATE _____
 APPROVED BY _____ PLANS DEPT.
 APPROVED BY _____ R.W. ENGINEER

R/W inked & checked on plans 5/17/3.

FED. ROAD DIST. NO.	STATE	FED. AID PROJ. NO.	FISCAL YEAR	SHEET NO.	TOTAL SHEETS
1	MONT.	219B		2	3



New World Life Ins. Co.
Seattle, Wash.
Cont. to Wm. F. Seltz
Route 2
Missoula, Mont.

PATENT TO
DANLOUR HAMEL
BK 126, PG 182
11-25-1939

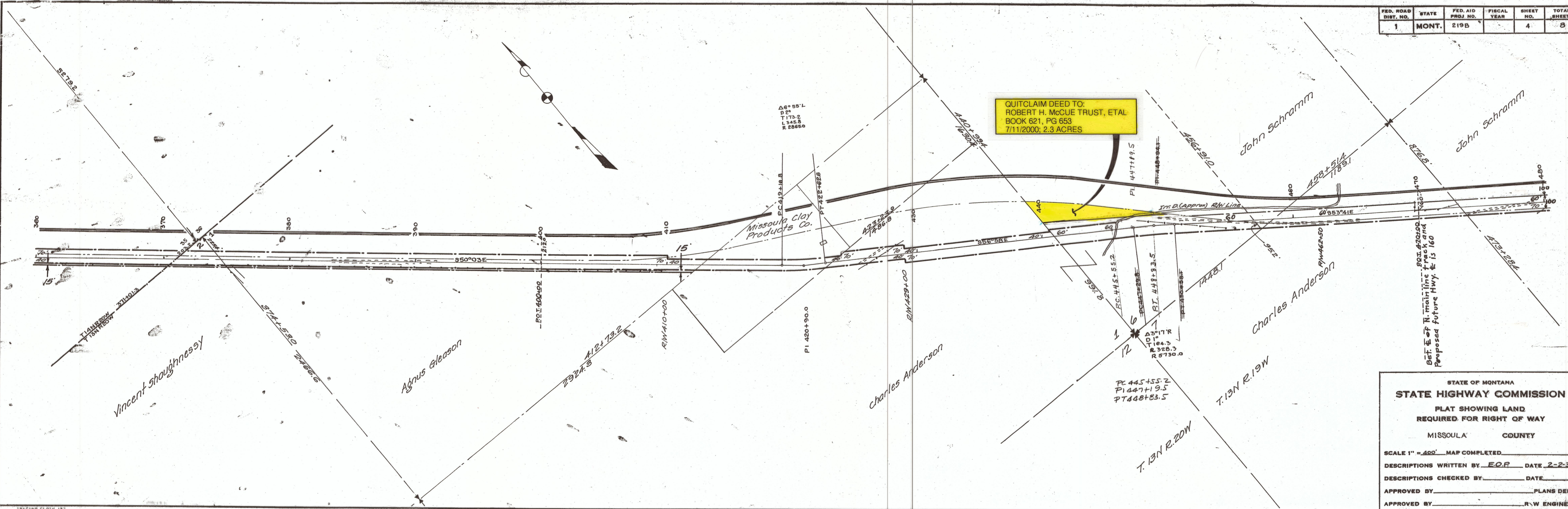
219 B. Staked
Δ = 30° 25' L
D = 4'
T = 389.4
L = 760.4
R = 1432.5

Note -
See Sheet 3 Proj. 271
for detail of Wye.

STATE OF MONTANA
STATE HIGHWAY COMMISSION
PLAT SHOWING LAND
REQUIRED FOR RIGHT OF WAY
MISSOULA COUNTY

SCALE 1" = 400' MAP COMPLETED _____
 DESCRIPTIONS WRITTEN BY E.O.P. DATE 2-2-32
 DESCRIPTIONS CHECKED BY _____ DATE _____
 APPROVED BY _____ PLANS DEPT.
 APPROVED BY _____ R.W. ENGINEER

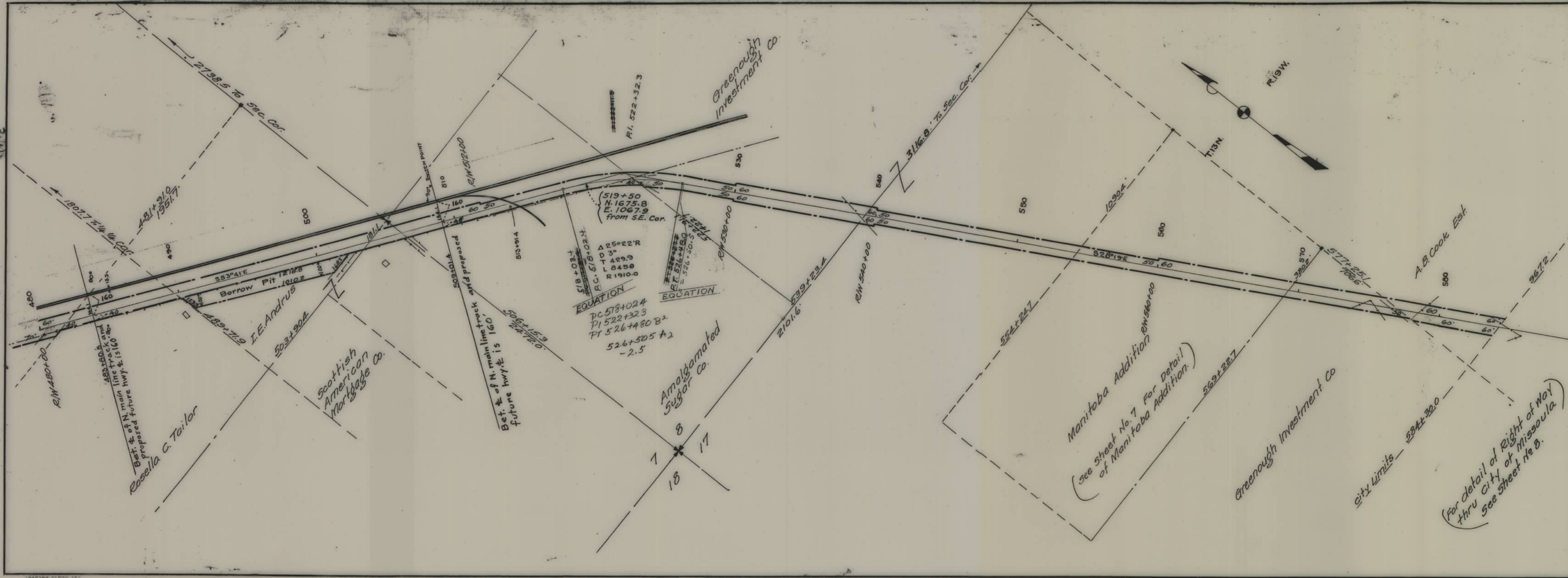
FED. ROAD DIST. NO.	STATE	FED. AID PROJ. NO.	FISCAL YEAR	SHEET NO.	TOTAL SHEETS
1	MONT.	219B		4	8



STATE OF MONTANA
STATE HIGHWAY COMMISSION
 PLAT SHOWING LAND
 REQUIRED FOR RIGHT OF WAY
 MISSOULA COUNTY

SCALE 1" = 400' MAP COMPLETED
 DESCRIPTIONS WRITTEN BY E.O.P. DATE 2-2-32
 DESCRIPTIONS CHECKED BY _____ DATE _____
 APPROVED BY _____ PLANS DEPT
 APPROVED BY _____ R.W. ENGINEER

FED. ROAD DIST. NO.	STATE	FED. AID PROJ. NO.	FISCAL YEAR	SHEET NO.	TOTAL SHEETS
1	MONT.	219B		5	8



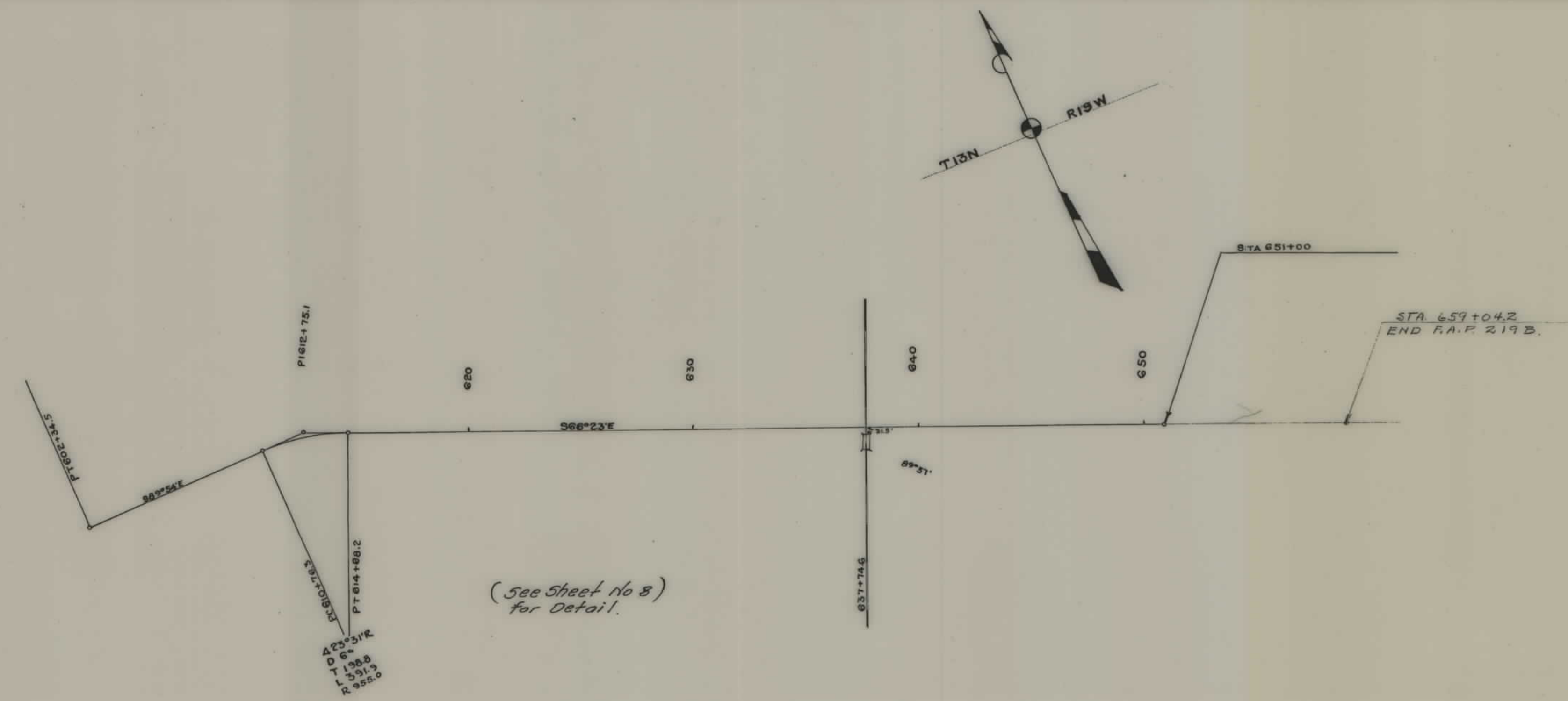
EQUATION
 PC 518+02.4
 PT 518+15.0
 PI 518+08.7
 R 1910.0
 DC 518+02.4
 PT 522+32.3
 PI 526+480 B²
 526+505 A²
 -2.5

STATE OF MONTANA
STATE HIGHWAY COMMISSION
 PLAT SHOWING LAND
 REQUIRED FOR RIGHT OF WAY
 MISSOULA COUNTY
 SCALE 1" = 400' MAP COMPLETED _____
 DESCRIPTIONS WRITTEN BY E.O.R. DATE 2-3-32
 DESCRIPTIONS CHECKED BY _____ DATE _____
 APPROVED BY _____ PLANS DEPT.
 APPROVED BY _____ R.W. ENGINEER

(For detail of Right of Way
 thru City of Missoula
 See Sheet No. 8.

(see Sheet No. 7 For Detail
 of Manitoba Addition.)

FED. ROAD DIST. NO.	STATE	FED. AID PROJ. NO.	FISCAL YEAR	SHEET NO.	TOTAL SHEETS
1	MONT.	219B		6	8



STATE OF MONTANA
STATE HIGHWAY COMMISSION
 PLAT SHOWING LAND
 REQUIRED FOR RIGHT OF WAY
 MISSOULA COUNTY

SCALE 1" = 400' MAP COMPLETED _____
 DESCRIPTIONS WRITTEN BY _____ DATE _____
 DESCRIPTIONS CHECKED BY _____ DATE _____
 APPROVED BY _____ PLANS DEPT. _____
 APPROVED BY _____ R-W ENGINEER _____

5

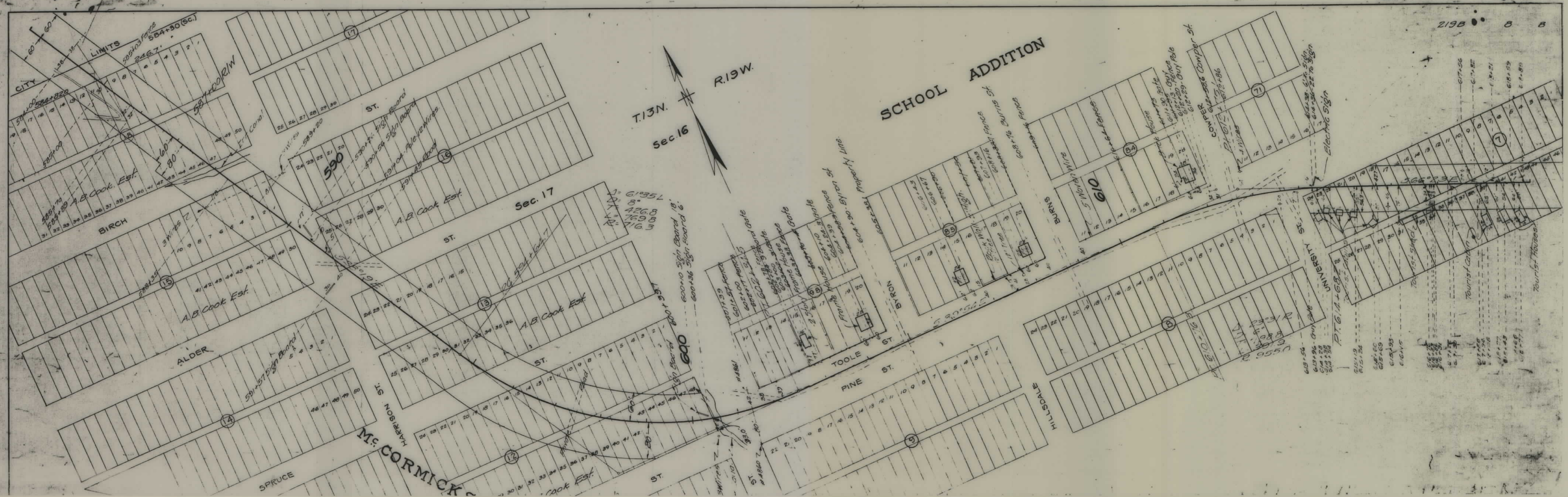
FED. ROAD DIST. NO.	STATE	FED. AID PROJ. NO.	FISCAL YEAR	SHEET NO.	TOTAL SHEETS
1	MONT.	219-B		7	8



MANITOBA ADDITION

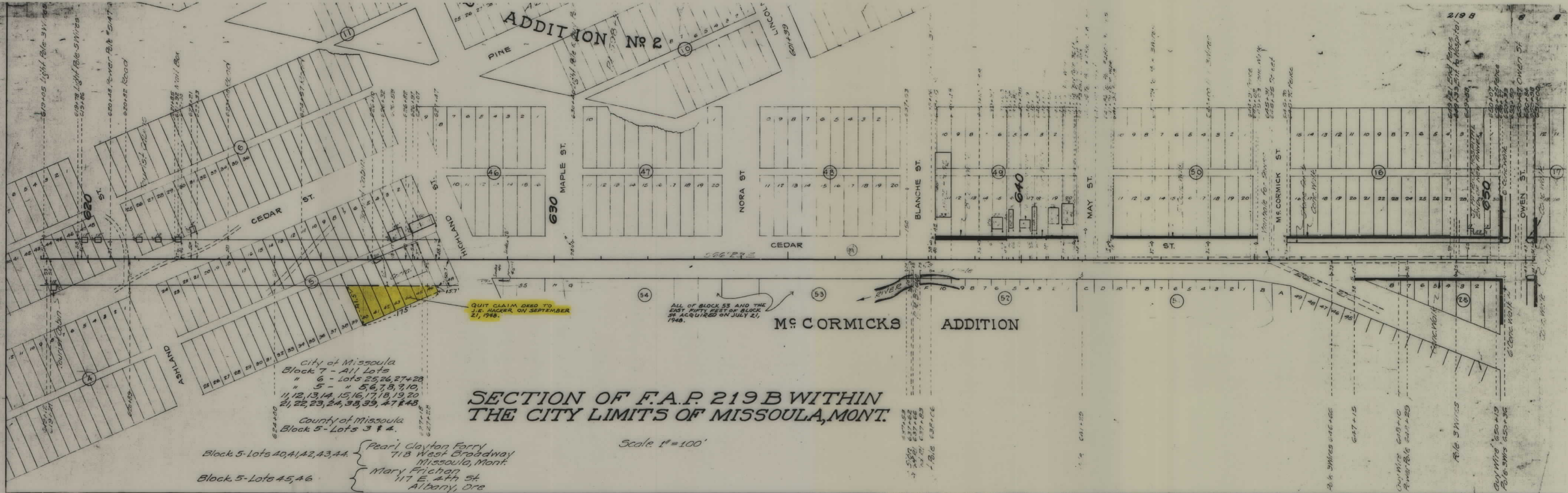
BLOCK	LOT	OWNER
3	1-3, 7-10	Greenough Investment Co.
	4-6, 17-20	Leonie G. Demers
	11-16	Mathilda S. Solomon
4	1-20	Greenough Investment Co.
12	1-10	Mathilda S. Solomon
	11-20	Joseph Herman
16	1-20	Mathilda S. Solomon
27	1-10, 14-20	Missoula County
	11-13	Leonie G. Demers

STATE OF MONTANA
STATE HIGHWAY COMMISSION
 PLAT SHOWING LAND
 REQUIRED FOR RIGHT OF WAY
 MISSOULA COUNTY
 SCALE 1" = 100' MAP COMPLETED 1-29-32
 DESCRIPTIONS WRITTEN BY E.O.P. DATE 2-4-32
 DESCRIPTIONS CHECKED BY _____ DATE _____
 APPROVED BY _____ PLANS DEPT.
 APPROVED BY _____ R.W. ENGINEER



219B 8 8

5



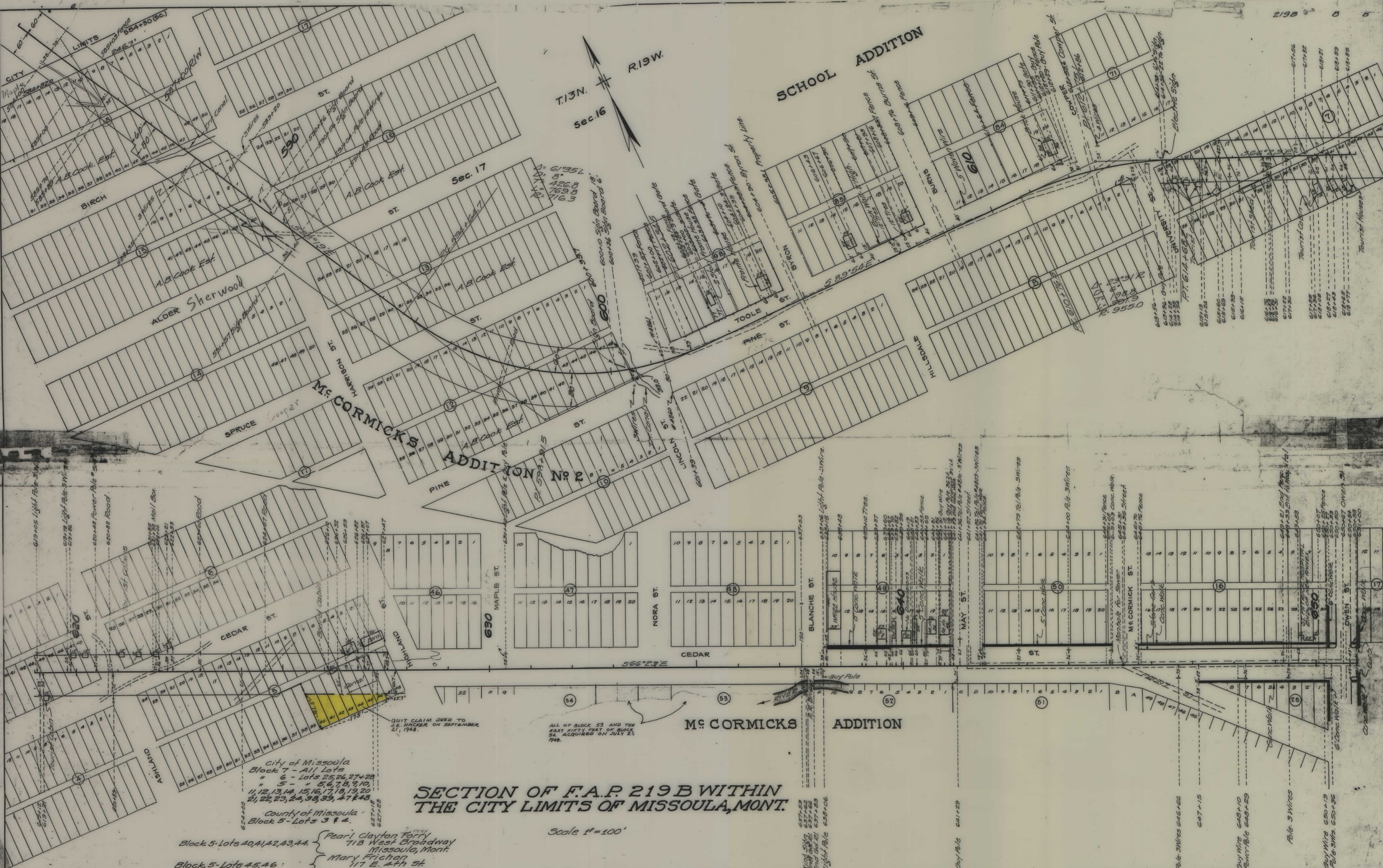
SECTION OF F.A.P. 219 B WITHIN THE CITY LIMITS OF MISSOULA, MONT.

Scale 1"=100'

- City of Missoula
 - Block 7 - All Lots
 - " 6 - Lots 25, 26, 27, 28
 - " 5 - " 5, 6, 7, 8, 9, 10, 11, 12, 13, 14, 15, 16, 17, 18, 19, 20, 21, 22, 23, 24, 38, 39, 47 & 48
- County of Missoula
 - Block 5 - Lots 3 & 4.
- Block 5 - Lots 40, 41, 42, 43, 44. { Pearl Clayton Ferry
718 West Broadway
Missoula, Mont.
- Block 5 - Lots 45, 46. { Mary Frichon
117 E. 4th St
Albany, Ore

QUIT CLAIM DEED TO J.E. HACKER ON SEPTEMBER 21, 1948.

ALL OF BLOCK 53 AND THE EAST FIFTY FEET OF BLOCK 54 ACQUIRED ON JULY 21, 1948.



SECTION OF F.A.P. 219 B WITHIN THE CITY LIMITS OF MISSOULA, MONT.

Scale 1"=100'

City of Missoula
Block 7 - All Lots
" 6 - Lots 25, 26, 27, 28
" 5 - Lots 1, 2, 3, 4, 5, 6, 7, 8, 9, 10,
11, 12, 13, 14, 15, 16, 17, 18, 19, 20,
21, 22, 23, 24, 25, 26, 27, 28, 29, 30, 31, 32, 33, 34, 35, 36, 37, 38, 39, 40, 41, 42, 43, 44, 45, 46, 47, 48, 49, 50, 51, 52, 53, 54, 55, 56, 57, 58, 59, 60, 61, 62, 63, 64, 65, 66, 67, 68, 69, 70, 71, 72, 73, 74, 75, 76, 77, 78, 79, 80, 81, 82, 83, 84, 85, 86, 87, 88, 89, 90, 91, 92, 93, 94, 95, 96, 97, 98, 99, 100

County of Missoula
Block 5 - Lots 3 & 4

Block 5 - Lots 40, 41, 42, 43, 44

Block 5 - Lots 45, 46

Pearl Clayton Ferry
713 West Broadway
Missoula, Mont.

Mary Frichan
117 E. 4th St
Albany, Ore

QUIT CLAIM DEED TO J.E. HACKER ON SEPTEMBER 21, 1948

ALL OF BLOCK 53 AND THE EAST FIFTY FEET OF BLOCK 52 ACQUIRED ON JULY 21, 1948.