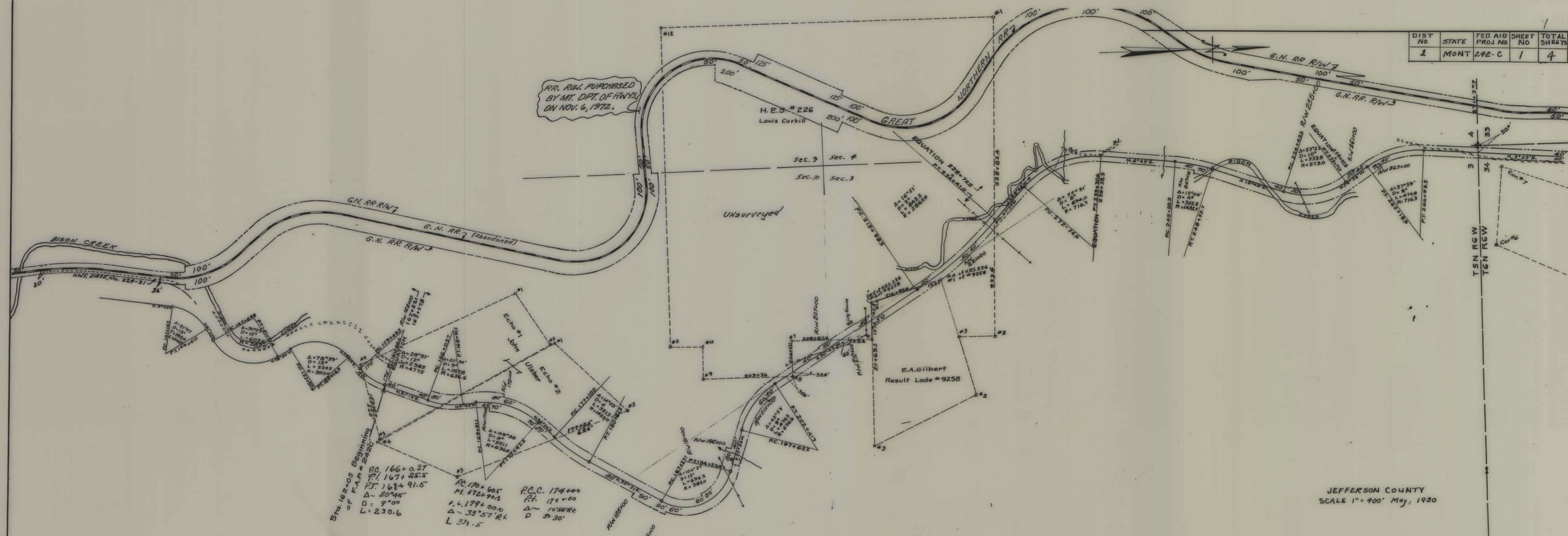


PLANS
NOT
TO
SCALE

DIST. No.	STATE	FED. AID PROJ. No.	SHEET No.	TOTAL SHEETS
1	MONT	242-C	1	4



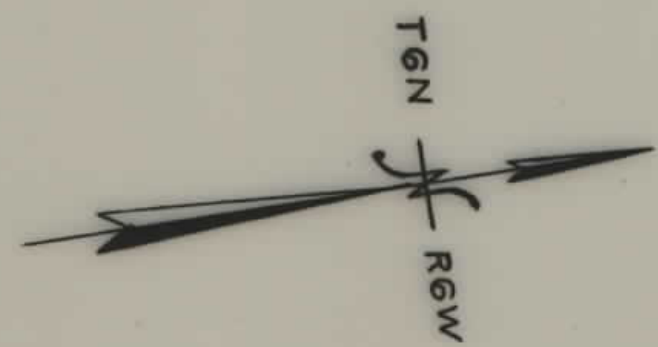
5th 162+05 Beginning of F.A.R. #242C

PC 166+0.37
 P.I. 167+25.5
 P.T. 168+91.5
 $\Delta = 20^{\circ}44'$
 $D = 9^{\circ}00'$
 $L = 230.6$

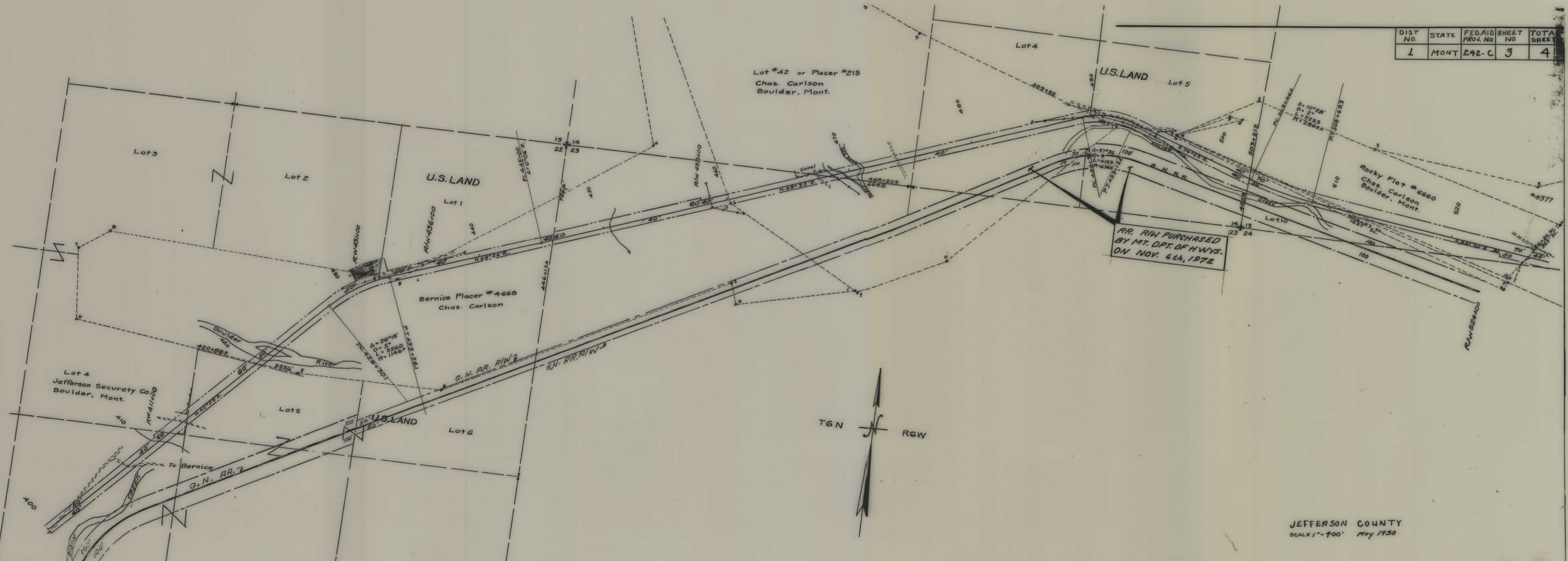
PC 170+605
 P.I. 172+90.2
 P.T. 174+00.0
 $\Delta = 33^{\circ}57'R$
 $L = 314.5$

P.C.C. 174+00
 P.T. 174+00
 $\Delta = 10^{\circ}50'R$
 $D = 50^{\circ}30'$

DIST NO	STATE	FED. AID PROJ. NO.	SHEET NO.	TOTAL SHEETS
1	MONT	242-C	2	4

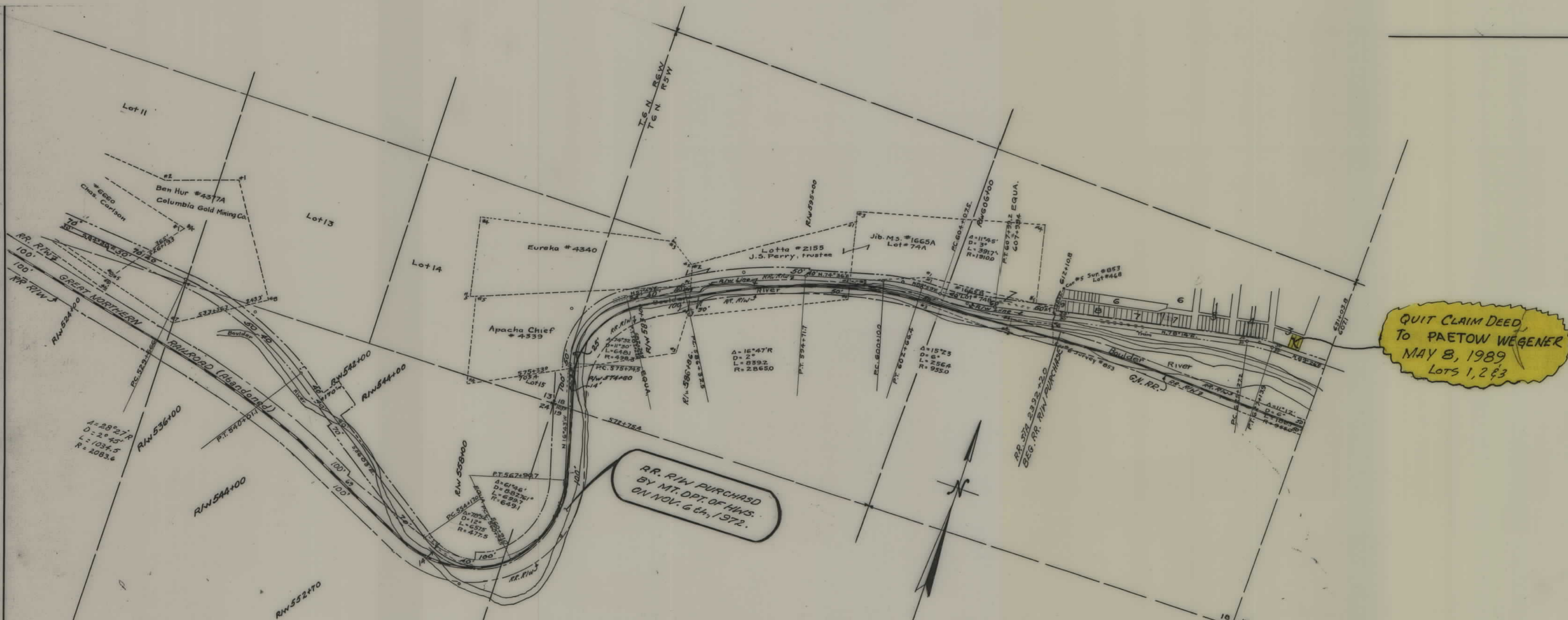


DIST. NO.	STATE	FED. AID PROJ. NO.	SHEET NO.	TOTAL SHEETS
1	MONT	242-C	3	4



JEFFERSON COUNTY
SCALE 1" = 400' May 1930

DIST. NO.	STATE	FED. AID PROJ. NO.	SHEET NO.	TOTAL SHEETS
1	MONT	242-C	4	4



JEFFERSON COUNTY
SCALE 1" = 400' May, 1930