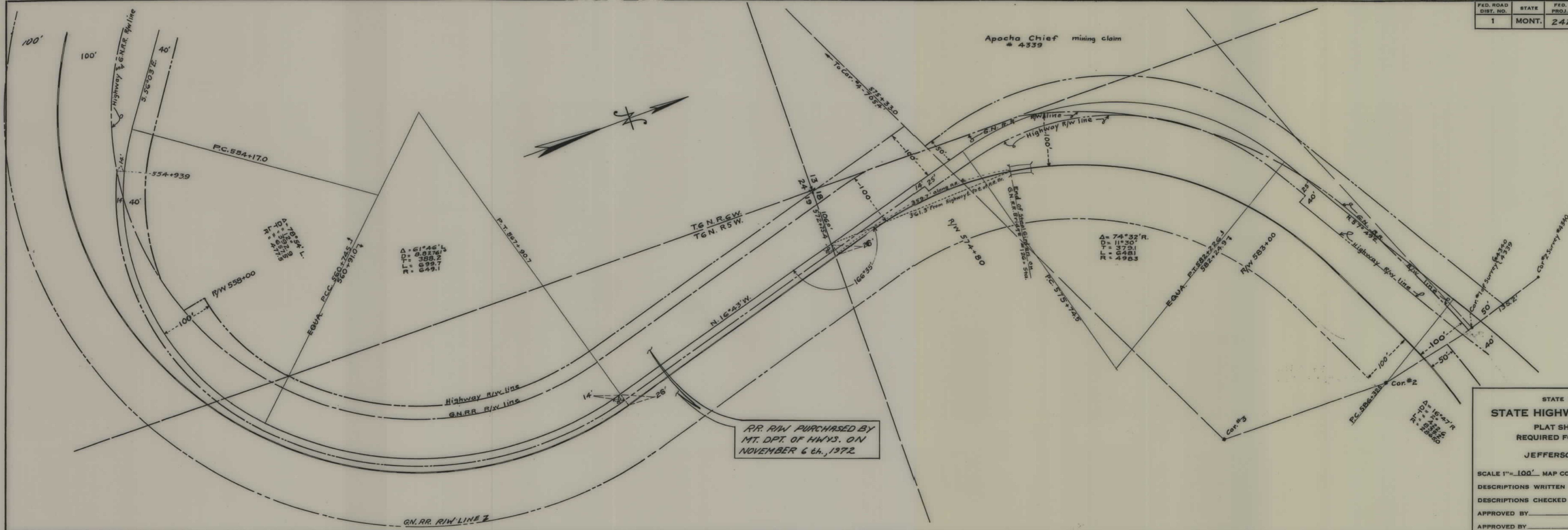


PLANS
NOT
TO
SCALE

FED. ROAD DIST. NO.	STATE	FED. AID PROJ. NO.	FISCAL YEAR	SHEET NO.	TOTAL SHEETS
1	MONT.	242C			



STATE OF MONTANA
STATE HIGHWAY COMMISSION
PLAT SHOWING LAND
REQUIRED FOR RIGHT OF WAY
JEFFERSON COUNTY

SCALE 1"= 100' MAP COMPLETED 9-4-30

DESCRIPTIONS WRITTEN BY E.O.R. DATE 10-11-30

DESCRIPTIONS CHECKED BY T.P.J. DATE "

APPROVED BY _____ PLANS DEPT.

APPROVED BY _____ R/W ENGINEER

