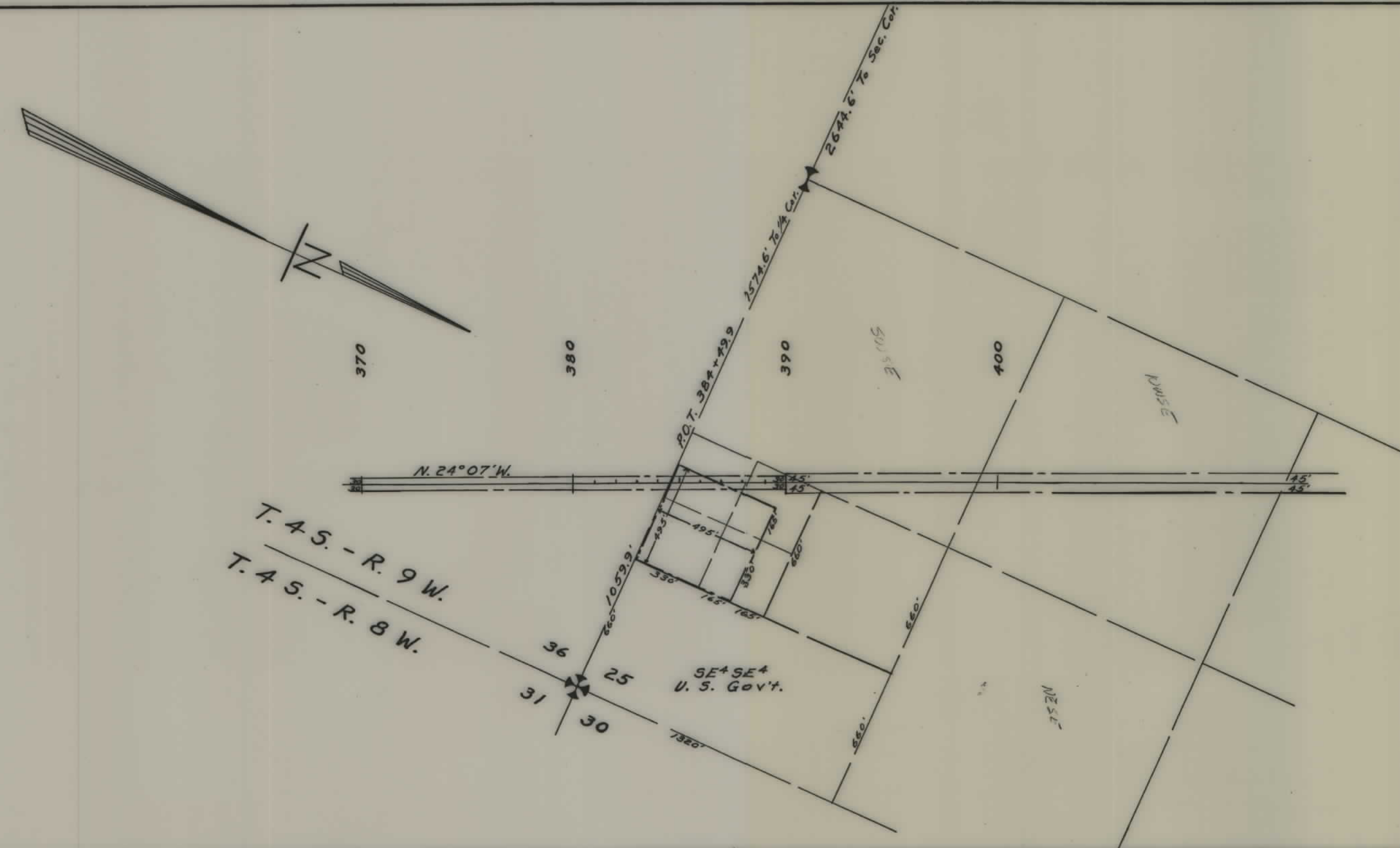


PLANS
NOT
TO
SCALE

FED. ROAD DIST. NO.	STATE	FED. AID PROJ. NO.	FISCAL YEAR	SHEET NO.	TOTAL SHEETS
1	MONT.	F-241-A		1	1



STATE OF MONTANA
STATE HIGHWAY COMMISSION
PLAT SHOWING LAND
REQUIRED FOR RIGHT OF WAY
BERVERHERD COUNTY

SCALE 1"= 400'. MAP COMPLETED August 1947.

DESCRIPTIONS WRITTEN BY _____ DATE _____

DESCRIPTIONS CHECKED BY _____ DATE _____

APPROVED BY _____ PLANS DEPT.

APPROVED BY _____ R/W ENGINEER