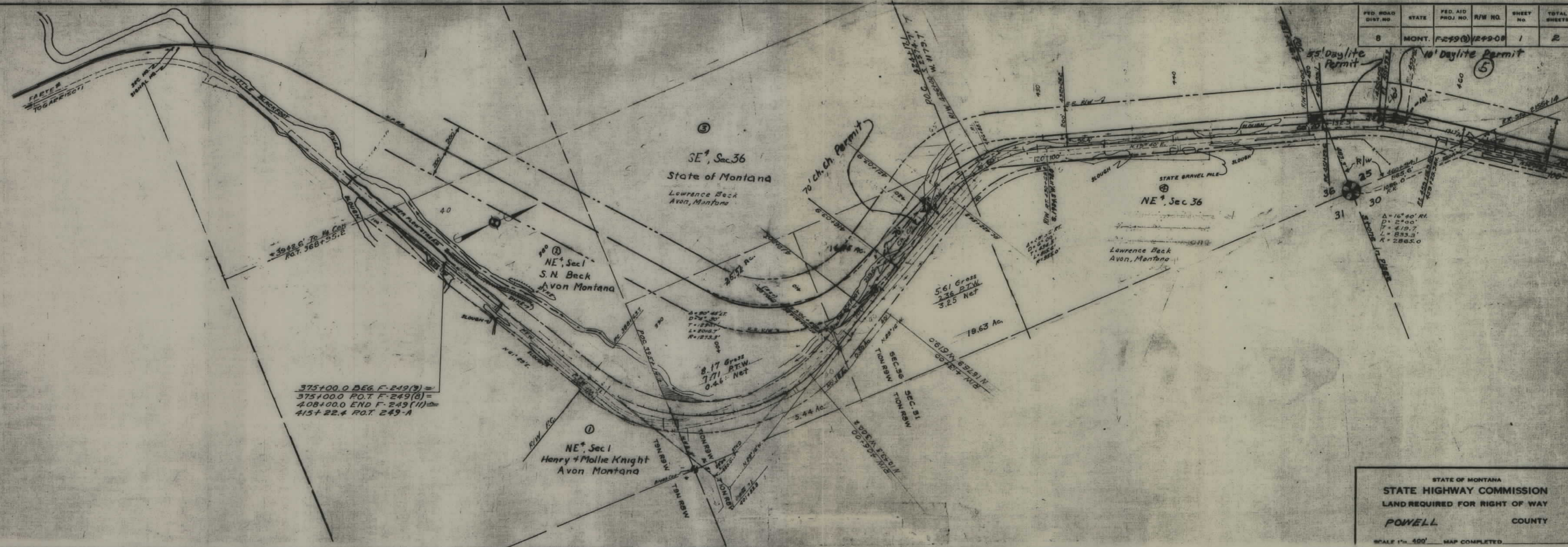


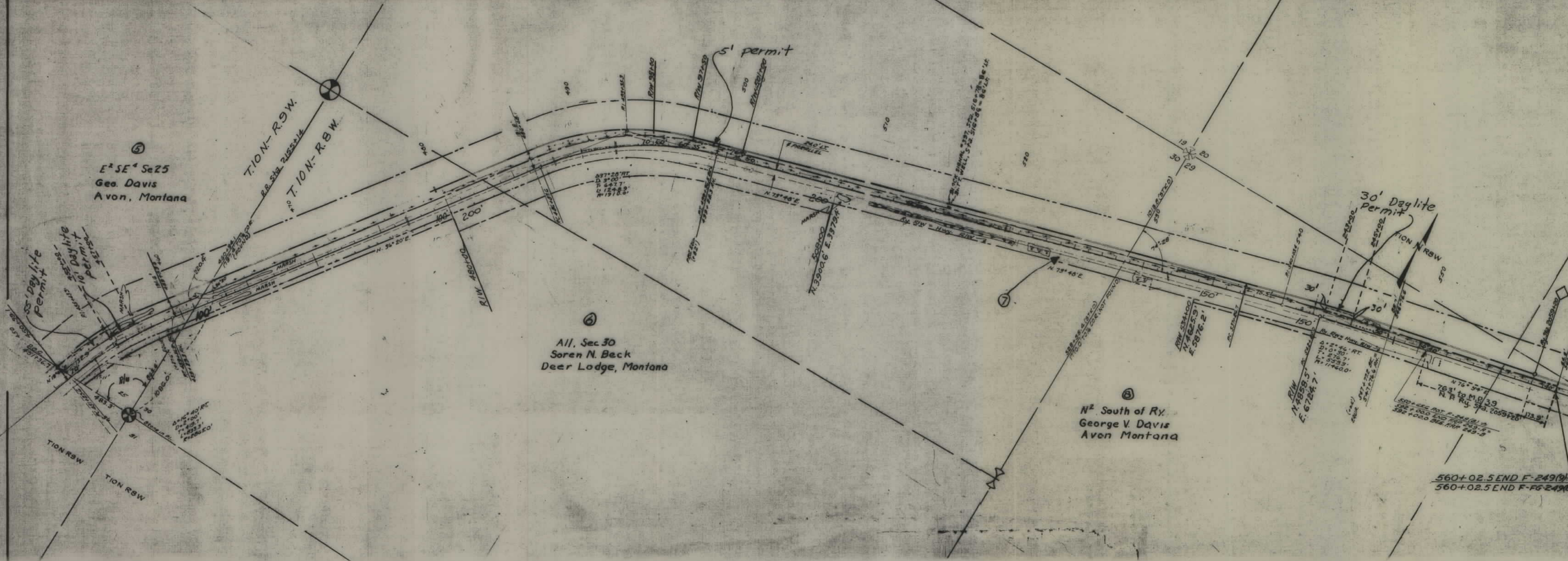
PLANS
NOT
TO
SCALE

FED. ROAD DIST. NO.	STATE	FED. AID PROJ. NO.	R/W NO.	SHEET NO.	TOTAL SHEETS
8	MONT.	F-249(1)	1249-08	1	2



STATE OF MONTANA
 STATE HIGHWAY COMMISSION
 LAND REQUIRED FOR RIGHT OF WAY
 POWELL COUNTY
 SCALE 1" = 400' MAP COMPLETED

FED. ROAD DIST. NO.	STATE	FED AID PROJ. NO.	R/W NO.	SHEET NO.	TOTAL SHEETS
8	MONT.	F-249(9)	1249-08	2	2



NE 1/4 NW 1/4 Sec. 28 T.10N-R.10W
Material Site Location
Shown on F-249-13
Sheet No. 1

560+02.5 END F-249(9)
560+02.5 END F-66-249(8)

STATE OF MONTANA
STATE HIGHWAY COMMISSION
LAND REQUIRED FOR RIGHT OF WAY
POWELL COUNTY
SCALE 1" = 400' HORIZ. DISTANCE