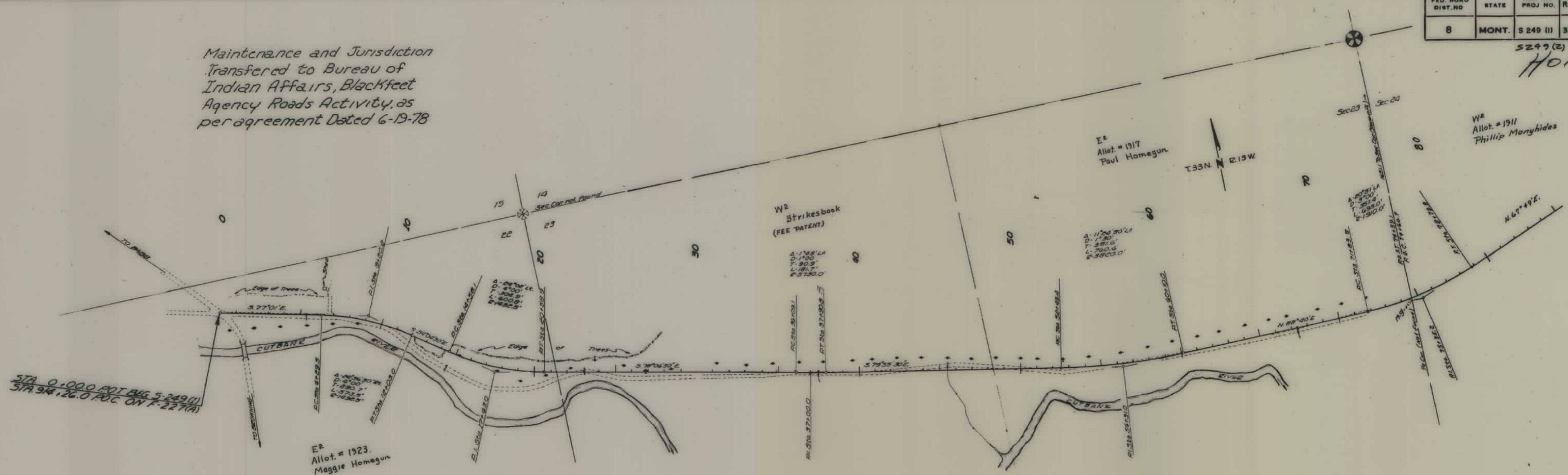


PLANS
NOT
TO
SCALE

FED. ROAD DIST. NO.	STATE	FED. AID PROJ. NO.	R/W NO.	SHEET NO.	TOTAL SHEETS
8	MONT.	S 249 (1)	3249-01	1	7

Maintenance and Jurisdiction
Transferred to Bureau of
Indian Affairs, Blackfeet
Agency Roads Activity, as
per agreement Dated 6-19-78



STA 0+000 P.O.T. BEG S 249(1)
STA 94+26.0 P.O.C. ON F-227(R)

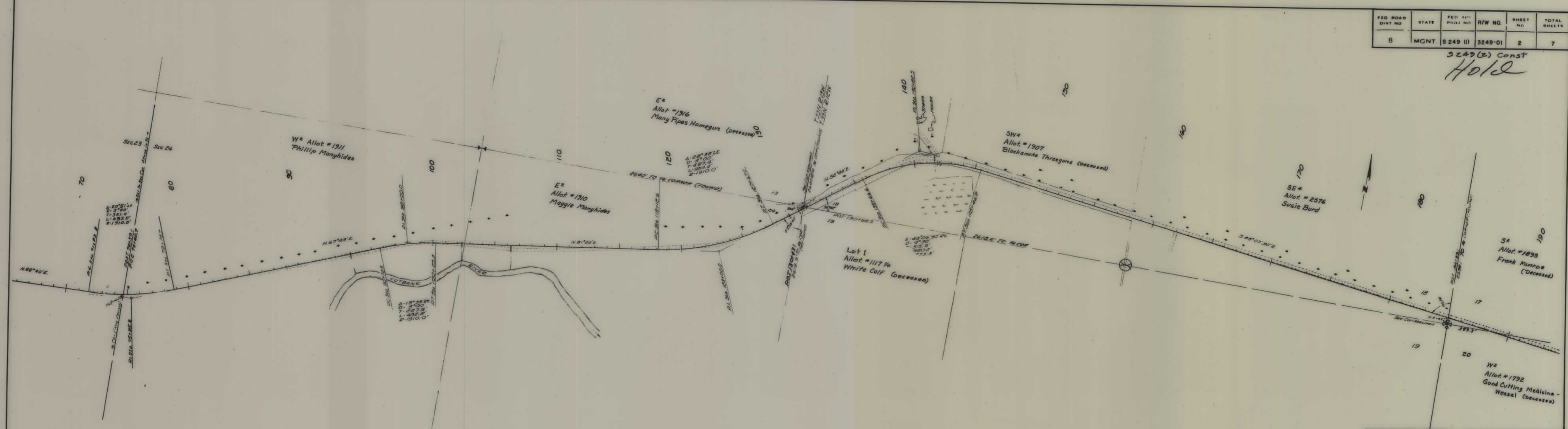
Proj cut of 6

STATE OF MONTANA
STATE HIGHWAY COMMISSION
LAND REQUIRED FOR RIGHT OF WAY
GLACIER COUNTY
SCALE 1"=400' MAP COMPLETED

S249(2) CONT
Hold

FED. ROAD DIST. NO.	STATE	FED. AID PROJ. NO.	R/W NO.	SHEET NO.	TOTAL SHEETS
8	MCNT.	S 249 (I)	3249-01	2	7

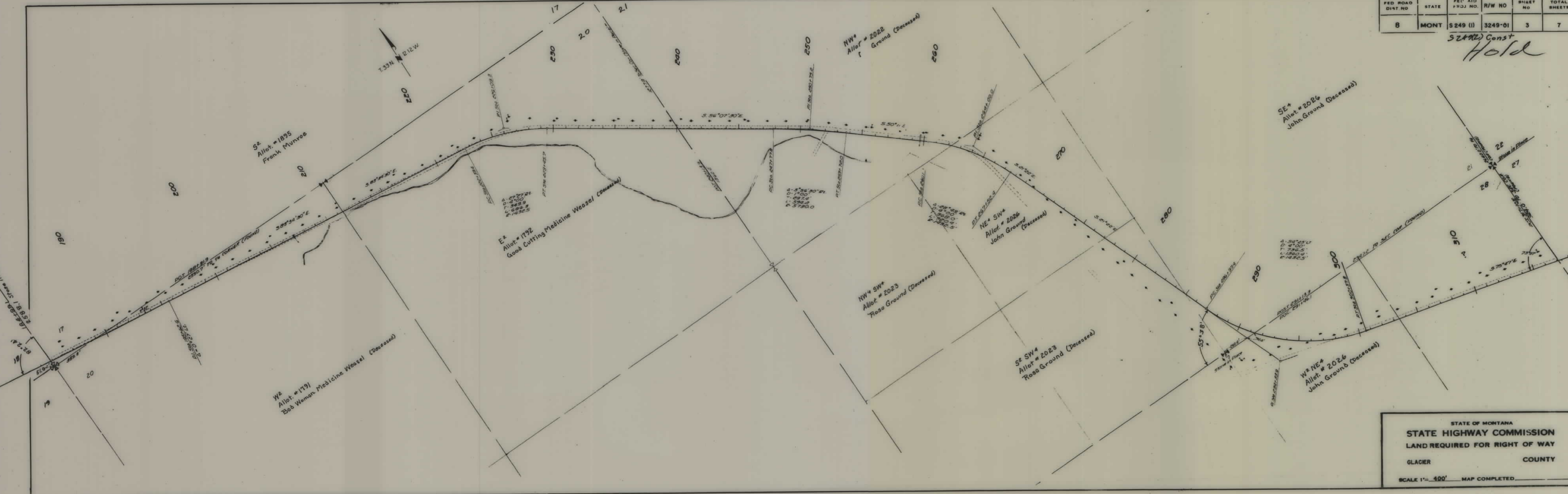
S249(2) Const
Hold



STATE OF MONTANA
STATE HIGHWAY COMMISSION
 LAND REQUIRED FOR RIGHT OF WAY
 GLACIER COUNTY
 SCALE 1" = 400' MAP COMPLETED

FED ROAD DIST NO	STATE	FED AID PROJ NO.	R/W NO	SHEET NO	TOTAL SHEETS
8	MONT	S249 (I)	3249-01	3	7

S249(1) Const
Hold



STATE OF MONTANA
 STATE HIGHWAY COMMISSION
 LAND REQUIRED FOR RIGHT OF WAY
 GLACIER COUNTY
 SCALE 1" = 400' MAP COMPLETED