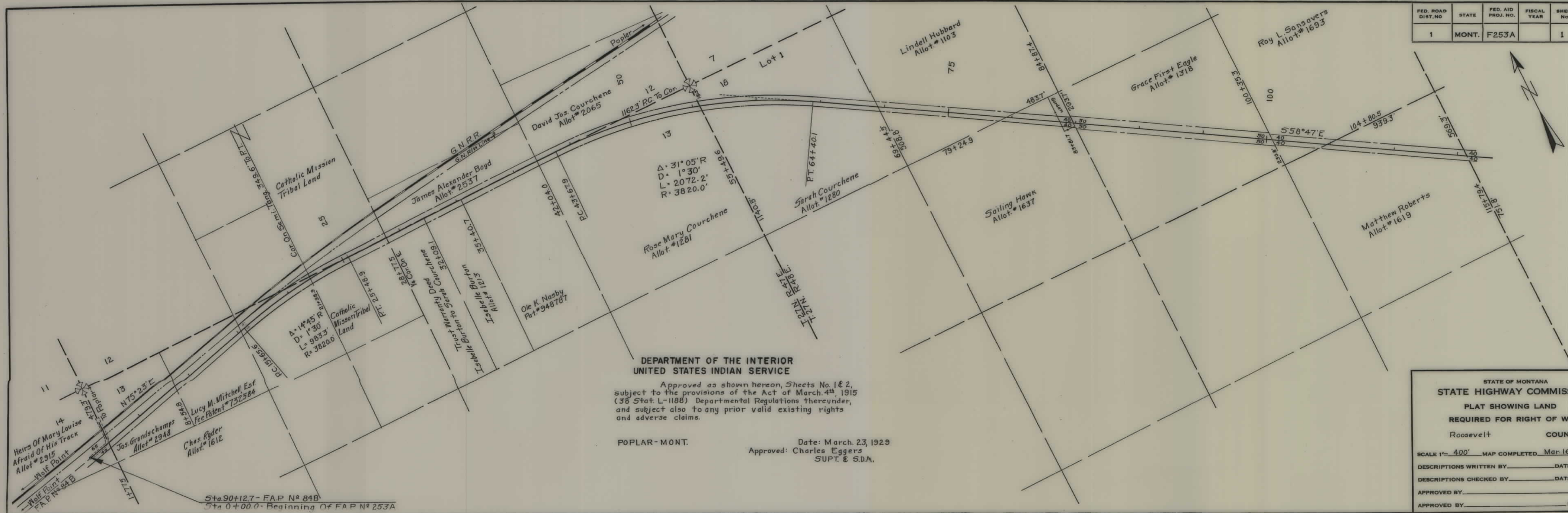


PLANS
NOT
TO
SCALE



FED. ROAD DIST. NO.	STATE	FED. AID PROJ. NO.	FISCAL YEAR	SHEET NO.	TOTAL SHEETS
1	MONT.	F253A		1	3

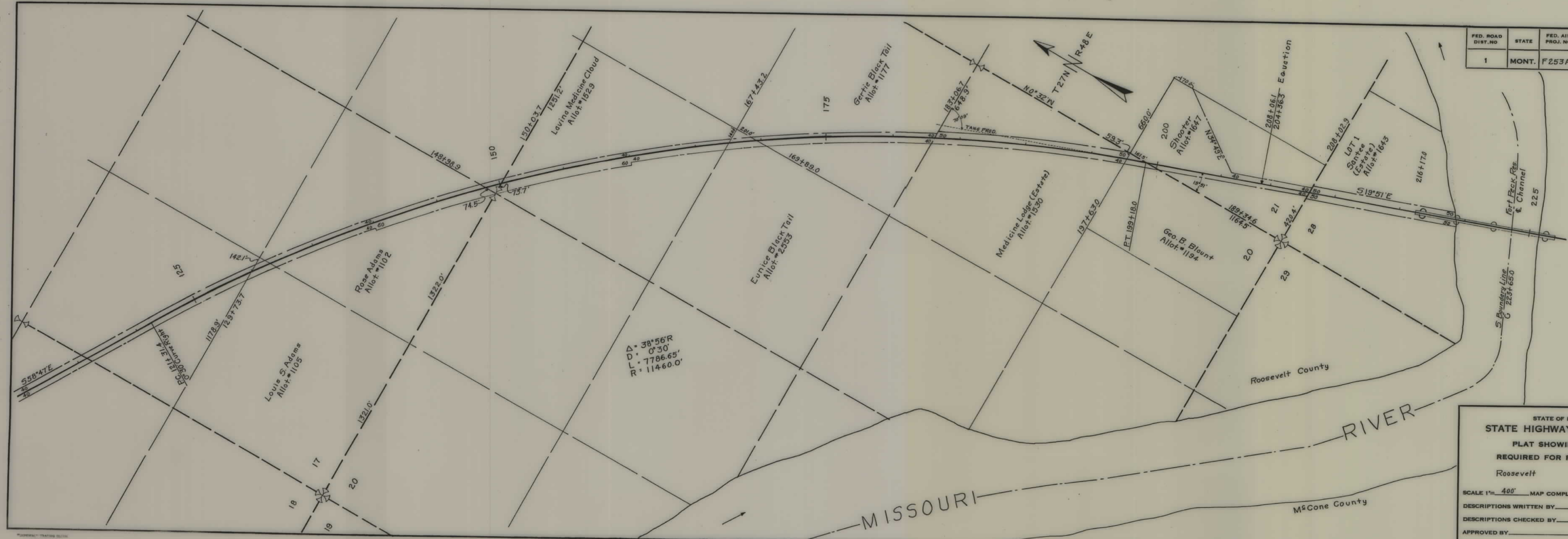
DEPARTMENT OF THE INTERIOR
UNITED STATES INDIAN SERVICE

Approved as shown hereon, Sheets No. 1 & 2,
subject to the provisions of the Act of March 4th, 1915
(38 Stat. L-1188) Departmental Regulations thereunder,
and subject also to any prior valid existing rights
and adverse claims.

POPLAR-MONT.

Date: March. 23, 1929
Approved: Charles Eggers
SUPT. & S.D.A.

STATE OF MONTANA	
STATE HIGHWAY COMMISSION	
PLAT SHOWING LAND	
REQUIRED FOR RIGHT OF WAY	
Roosevelt	COUNTY
SCALE 1"= 400' MAP COMPLETED Mar. 16, 1929	
DESCRIPTIONS WRITTEN BY	DATE
DESCRIPTIONS CHECKED BY	DATE
APPROVED BY	PLANS DEPT.
APPROVED BY	R/W ENGINEER



FED. ROAD DIST. NO.	STATE	FED. AID PROJ. NO.	FISCAL YEAR	SHEET NO.	TOTAL SHEETS
1	MONT.	F253A		2	3

STATE OF MONTANA
STATE HIGHWAY COMMISSION
PLAT SHOWING LAND
REQUIRED FOR RIGHT OF WAY
Roosevelt COUNTY

SCALE 1" = 400' MAP COMPLETED Mar. 16, 1929

DESCRIPTIONS WRITTEN BY _____ DATE _____

DESCRIPTIONS CHECKED BY _____ DATE _____

APPROVED BY _____ PLANS DEPT.

APPROVED BY _____ R/W ENGINEER



FED. ROAD DIST. NO.	STATE	FED. AID PROJ. NO.	FISCAL YEAR	SHEET No.	TOTAL SHEETS
1	MONT.	F253A		3	3

STATE OF MONTANA
STATE HIGHWAY COMMISSION
PLAT SHOWING LAND
REQUIRED FOR RIGHT OF WAY
M^{rs} Cone COUNTY

SCALE 1"= 400' MAP COMPLETED Mar. 16, 1929

DESCRIPTIONS WRITTEN BY _____ DATE _____

DESCRIPTIONS CHECKED BY _____ DATE _____

APPROVED BY _____ PLANS DEPT.

APPROVED BY _____ R/W ENGINEER