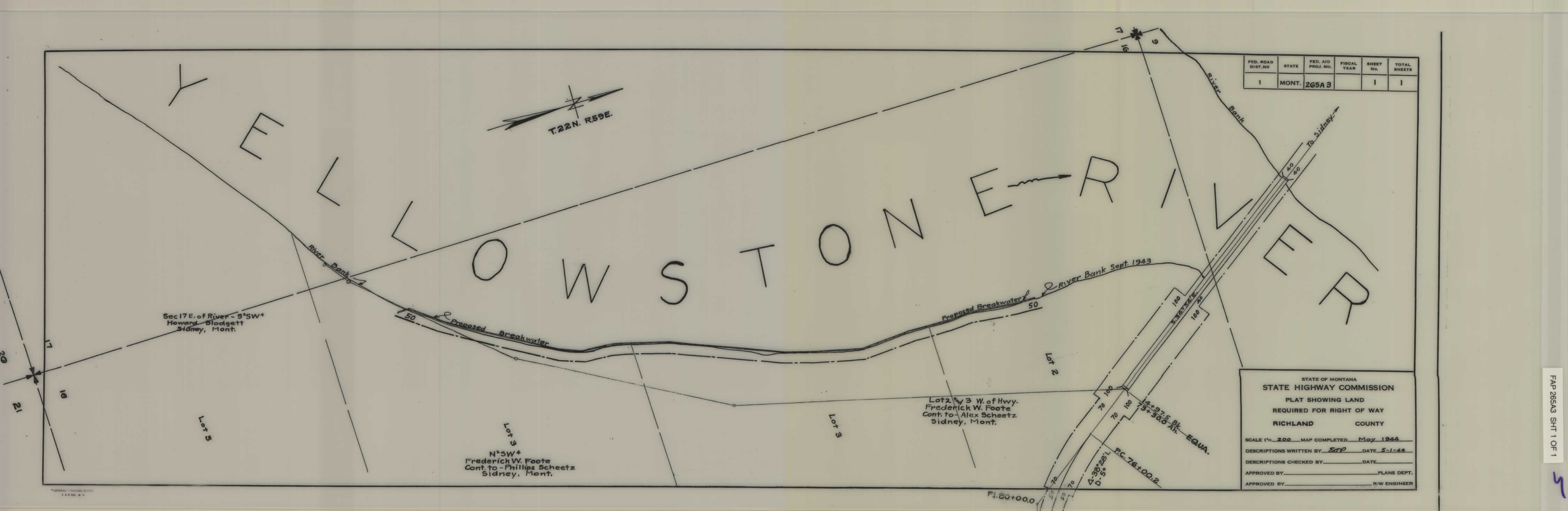


PLANS
NOT
TO
SCALE



FED. ROAD DIST. NO.	STATE	FED. AID PROJ. NO.	FISCAL YEAR	SHEET NO.	TOTAL SHEETS
1	MONT.	265A 3		1	1

STATE OF MONTANA
STATE HIGHWAY COMMISSION
PLAT SHOWING LAND
REQUIRED FOR RIGHT OF WAY
RICHLAND COUNTY

SCALE 1"= 200 MAP COMPLETED May 1944
DESCRIPTIONS WRITTEN BY EOP DATE 5-1-44
DESCRIPTIONS CHECKED BY DATE
APPROVED BY PLANS DEPT.
APPROVED BY R/W ENGINEER