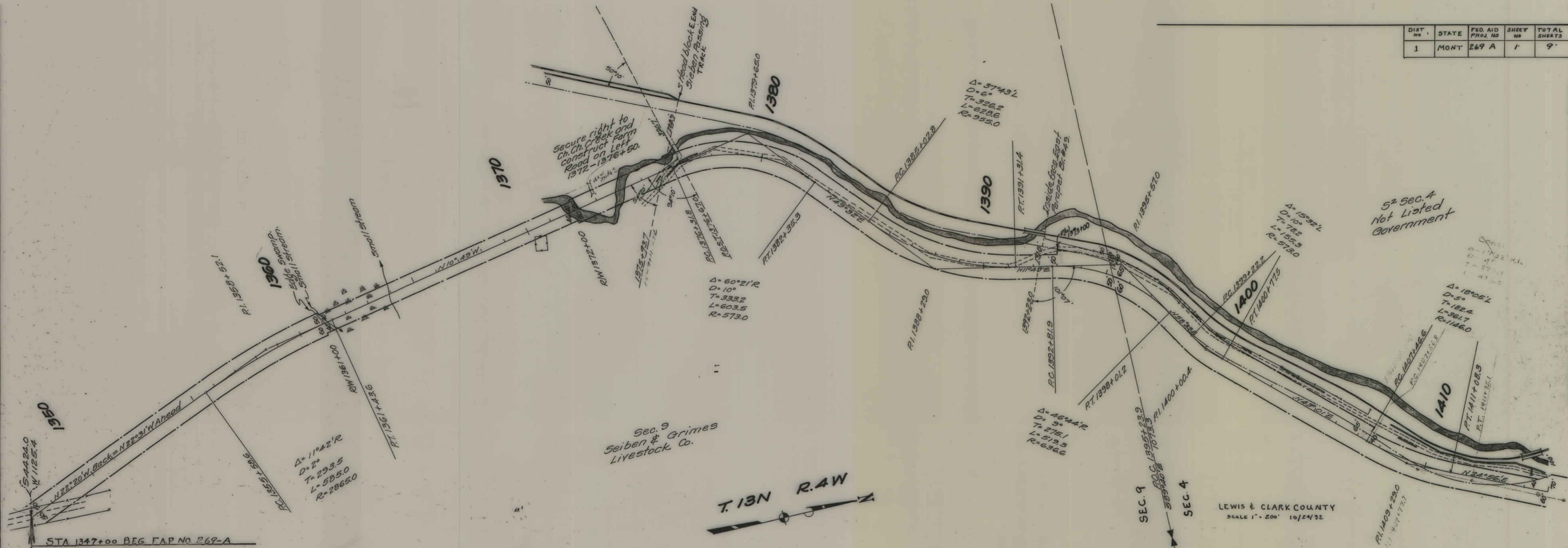
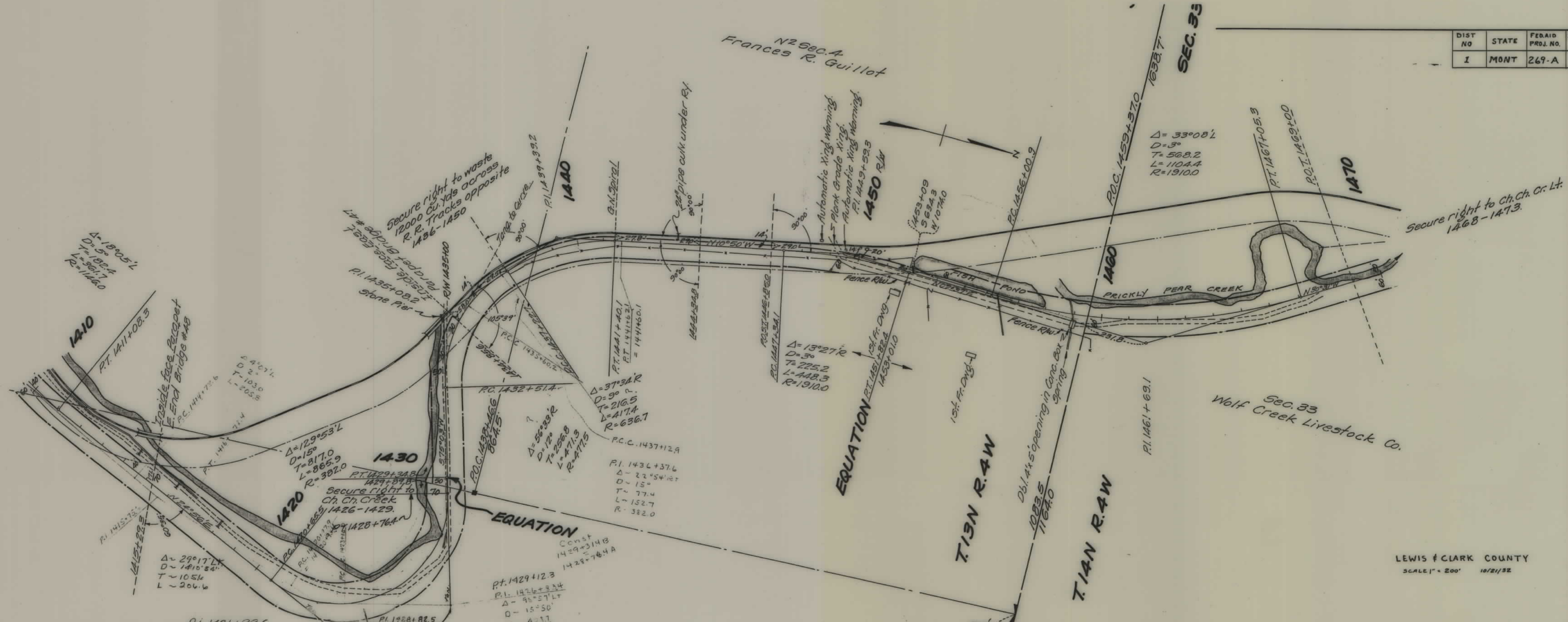


PLANS
NOT
TO
SCALE

DIST. NO.	STATE	FED. AID PROJ. NO.	SHEET NO.	TOTAL SHEETS
1	MONT	269 A	1	9



DIST NO	STATE	FED AID PROJ. NO.	SHEET NO	TOTAL SHEETS
1	MONT	269-A	2	9



N2580.A
Frances R. Guillot

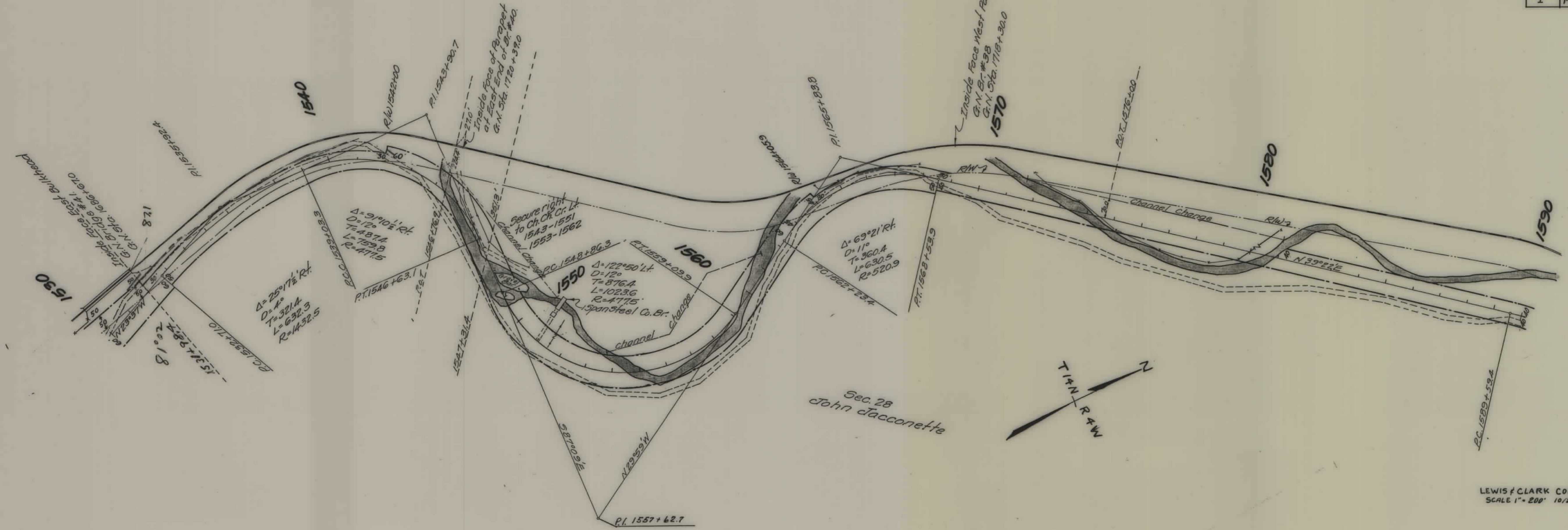
SEC. 33

Secure right to Ch. Ch. Cr. Lt.
1468-1473.

Sec. 33
Wolf Creek Livestock Co.

LEWIS & CLARK COUNTY
SCALE 1" = 200' 10/21/32

DIST No	STATE	FED. AID PROJ. No.	SHEET No	TOTAL SHEETS
1	MONT	269-A	4	9

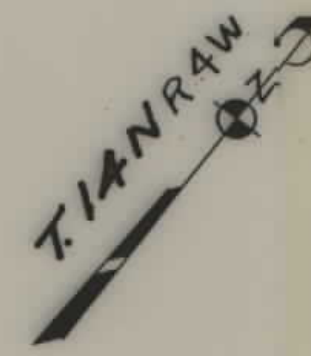


Sec. 28
John Jaconette



LEWIS & CLARK COUNTY
SCALE 1" = 200' 10/22/32

DIST NO	STATE	FED. AID PROJ. NO	SHEET NO.	TOTAL SHEETS
1	MONT	269-A	5	9



Sec. 21 Grimes
Livestock Co.

Inside Face East Parapet
G.N. Sta. 1762+640
G.N. Br. #36

Secure right to
Ch. Ch. C² Left
1604-1612

Earth Dam on
Wolf Stone Creek
Side toward Creek

Sec. 22 Livestock Co.
Wolf Creek

$\Delta = 19^{\circ}41' Lt$
 $D = 30$
 $T = 331.3$
 $L = 656.1$
 $R = 1310.0$

$\Delta = 28^{\circ}06' R$
 $D = 40$
 $T = 358.5$
 $L = 702.5$
 $R = 1432.5$

$\Delta = 44^{\circ}22' Rt$
 $D = 70$
 $T = 333.8$
 $L = 633.8$
 $R = 818.6$

$\Delta = 52^{\circ}38' Lt$
 $D = 50$
 $T = 566.8$
 $L = 1052.7$
 $R = 1146.0$

1590 SEC. 28 SEC. 21

1630

1640

1650

1610

1620

P.I. 1648+856

P.I. 1626+35.9

P.T. 1629+79.9

1621+48.1

1635+44.8

P.C. 1645+54.3

P.T. 1607+90.5

P.O. 1697+272

1182.4

1603+046 P.I.

P.O.C. 1604+354
1584.5

P.C. 1622+77.4
1624+50
N 1581.6
W 1481.3

N 59°12'E

N 31°06'E

R 3°41'

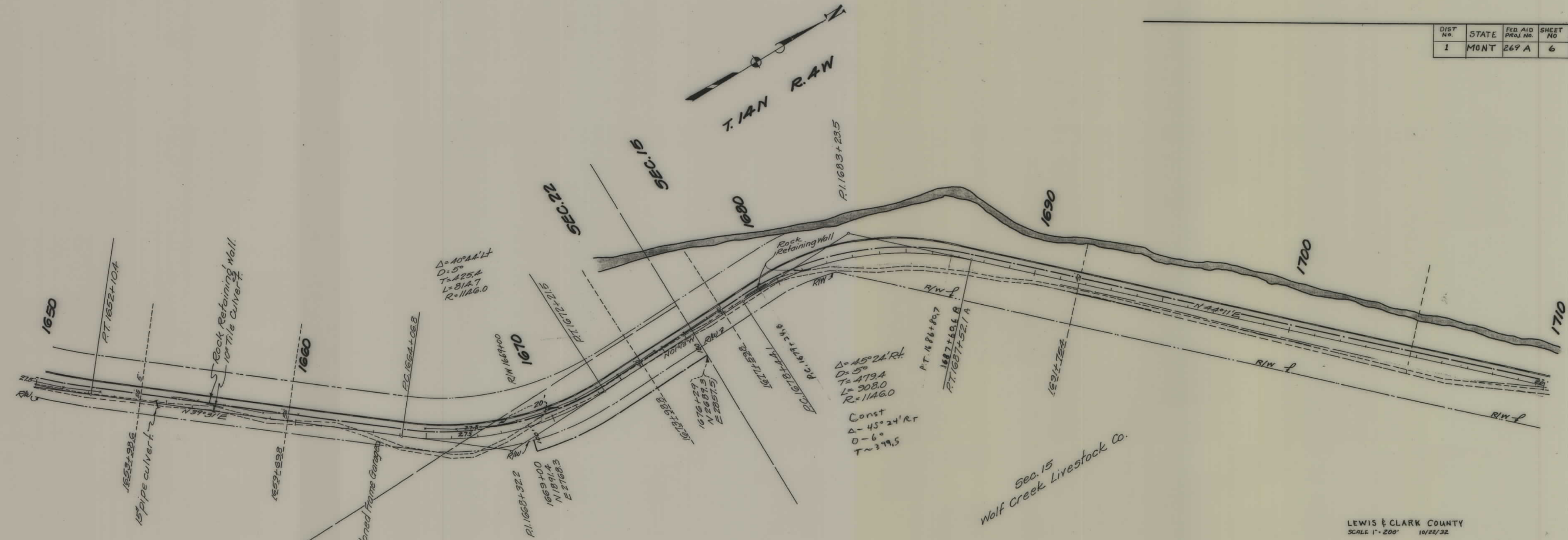
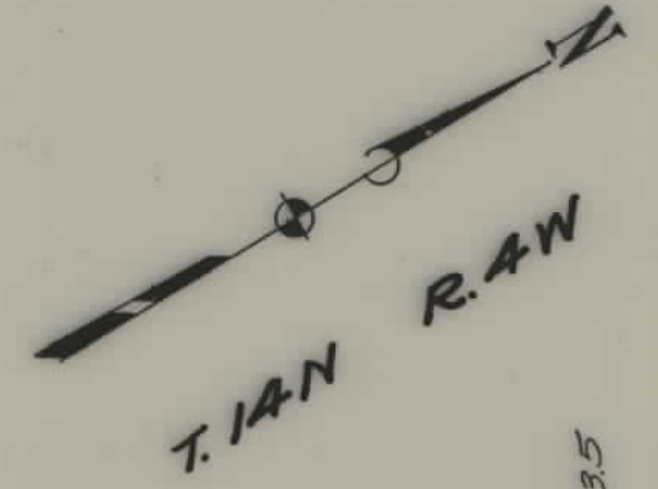
659.1

P.T. 1595+93.2

John Jaconette

LEWIS & CLARK COUNTY
SCALE 1" = 200' 10/22/32

DIST No.	STATE	FED AID PROJ. No.	SHEET No.	TOTAL SHEETS
1	MONT	269 A	6	9



$\Delta = 40^\circ 44' 14''$
 $D = 5^\circ$
 $T = 225.4$
 $L = 814.7$
 $R = 1146.0$

$\Delta = 45^\circ 24' 14''$
 $D = 5^\circ$
 $T = 479.4$
 $L = 908.0$
 $R = 1146.0$

Const
 $\Delta = 45^\circ 24' 14''$
 $D = 6^\circ$
 $T = 399.5$

Sec. 15
 Wolf Creek Livestock Co.

LEWIS & CLARK COUNTY
 SCALE 1" = 200' 10/22/32

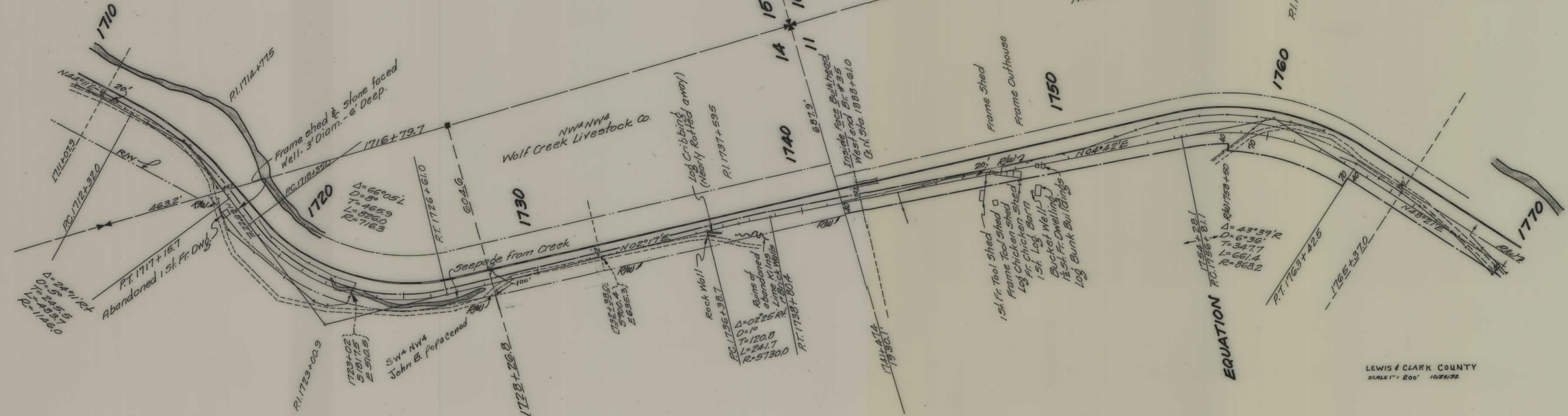
DIST No	STATE	FED AID PROJ. No	SHEET No	TOTAL SHEETS
1	MONT	269-A	7	9

T.14N R.4W

Nicholas C. Wirth

NW 1/4 NW 4
Wolf Creek Livestock Co.

SW 1/4 NW 4
John B. Popalened



EQUATION

LEWIS & CLARK COUNTY
SCALE 1" = 200' 10/24/32

T.14N R.4W



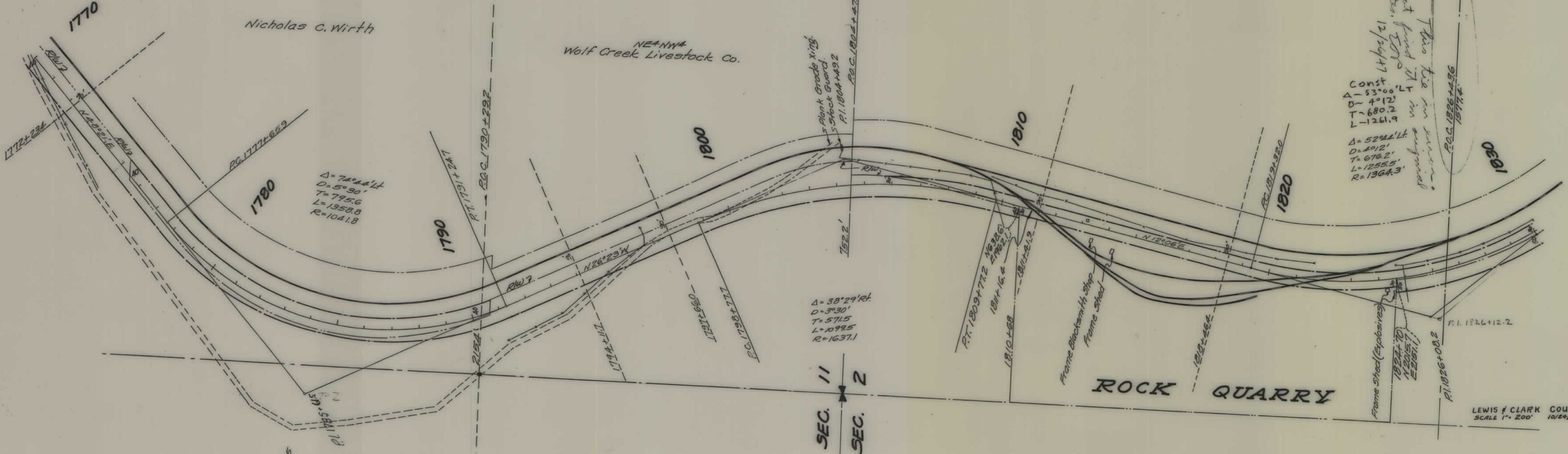
DIST NO.	STATE	FED. AID PROJ. NO.	SHEET NO.	TOTAL SHEETS
1	MONT.	269-A	8	9

SW⁴
George M. Motakis

NW⁴
Nicholas C. Wirth

Nicholas C. Wirth

NE+NW⁴
Wolf Creek Livestock Co.



Const.
 $\Delta = 53^{\circ}00' LT$
 $D = 4^{\circ}12'$
 $T = 680.2$
 $L = 1261.9$
 $\Delta = 52^{\circ}44' LT$
 $D = 4^{\circ}12'$
 $T = 676.2$
 $L = 1255.5$
 $R = 1364.3$

SEC. 11
SEC. 12

LEWIS & CLARK COUNTY
SCALE 1" = 200' 10/24/32

