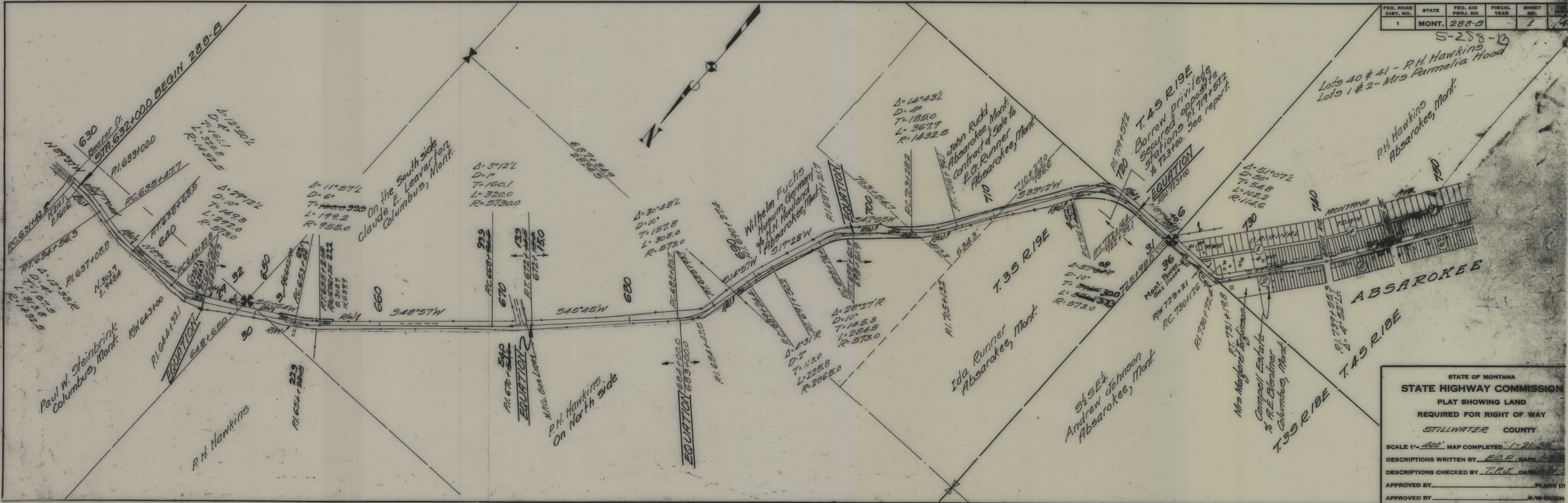


PLANS
NOT
TO
SCALE

FED. ROAD DIST. NO.	STATE	FED. AID PROJ. NO.	FISCAL YEAR	SHEET NO.
1	MONT.	288-B		1

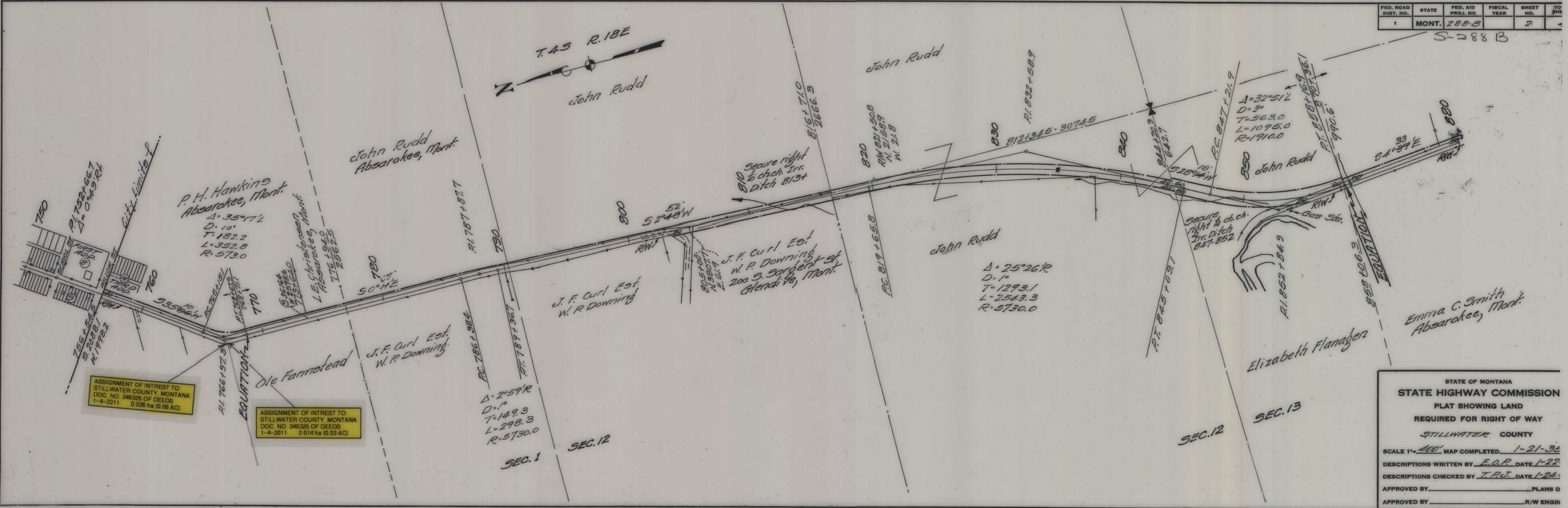
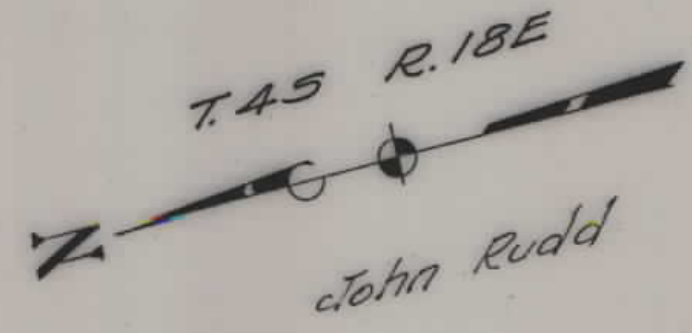


STATE OF MONTANA
STATE HIGHWAY COMMISSION
 PLAT SHOWING LAND
 REQUIRED FOR RIGHT OF WAY
 STILLWATER COUNTY

SCALE 1" = 400' MAP COMPLETED 1-21-35
 DESCRIPTIONS WRITTEN BY E.G.P. DATE 1-21-35
 DESCRIPTIONS CHECKED BY T.P.J. DATE 1-21-35
 APPROVED BY _____ PLANS BY _____
 APPROVED BY _____ R/W ENGR _____

FED. ROAD DIST. NO.	STATE	FED. AID PROJ. NO.	FISCAL YEAR	SHEET NO.	TOTAL SHEETS
1	MONT.	288-B		2	3

S-288 B



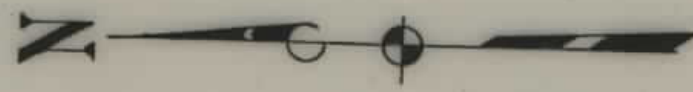
ASSIGNMENT OF INTEREST TO STILLWATER COUNTY, MONTANA
 DOC. NO. 346325 OF DEEDS
 1-4-2011 0.036 ha (0.06 AC)

ASSIGNMENT OF INTEREST TO STILLWATER COUNTY, MONTANA
 DOC. NO. 346325 OF DEEDS
 1-4-2011 0.014 ha (0.03 AC)

STATE OF MONTANA
 STATE HIGHWAY COMMISSION
 PLAT SHOWING LAND
 REQUIRED FOR RIGHT OF WAY
 STILLWATER COUNTY
 SCALE 1"=400' MAP COMPLETED 1-21-36
 DESCRIPTIONS WRITTEN BY E.O.P. DATE 1-22
 DESCRIPTIONS CHECKED BY T.P.J. DATE 1-24
 APPROVED BY _____ PLANS D
 APPROVED BY _____ R/W ENGIN

FED. ROAD DIST. NO.	STATE	FED. AID PROJ. NO.	FISCAL YEAR	SHEET NO.	TOTAL SHEETS
1	MONT.	288-B		3	4

S-288 B



T.43 R.18E

$\Delta = 10^{\circ}28' L$
 $D = 4'$
 $T = 131.2$
 $L = 261.7$
 $R = 1432.5$

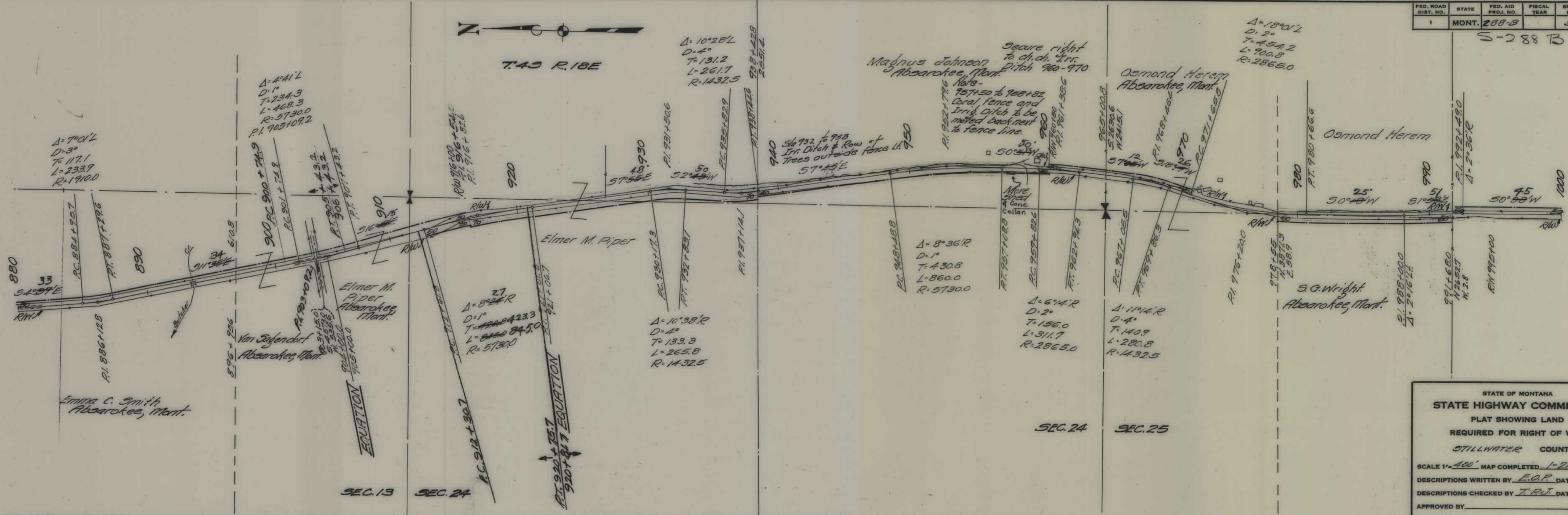
Magnus Johnson
 Absarokee, Mont.
 Secure right to ch. ch. Irr. Ditch 960-970

Osmond Herem
 Absarokee, Mont.

$\Delta = 18^{\circ}0' L$
 $D = 2'$
 $T = 454.2$
 $L = 900.8$
 $R = 2865.0$

Osmond Herem

S.G. Wright
 Absarokee, Mont.



STATE OF MONTANA
 STATE HIGHWAY COMMISSION
 PLAT SHOWING LAND
 REQUIRED FOR RIGHT OF WAY
 STILLWATER COUNTY

SCALE 1" = 400' MAP COMPLETED 1-21-35
 DESCRIPTIONS WRITTEN BY E.O.P. DATE 1-22-35
 DESCRIPTIONS CHECKED BY T.P.J. DATE 1-24-35

APPROVED BY _____ PLANS I
 APPROVED BY _____ R/W ENGR

