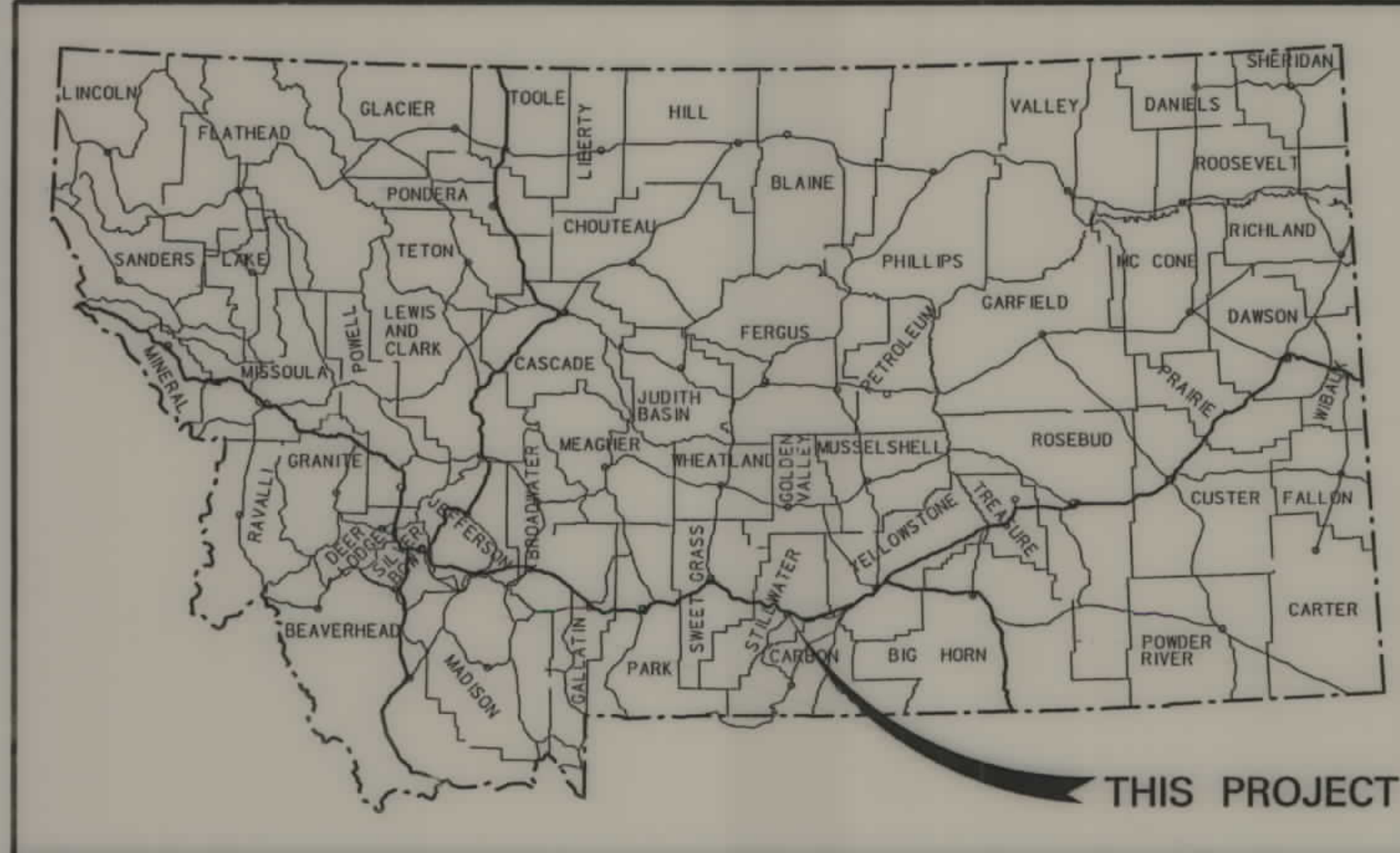


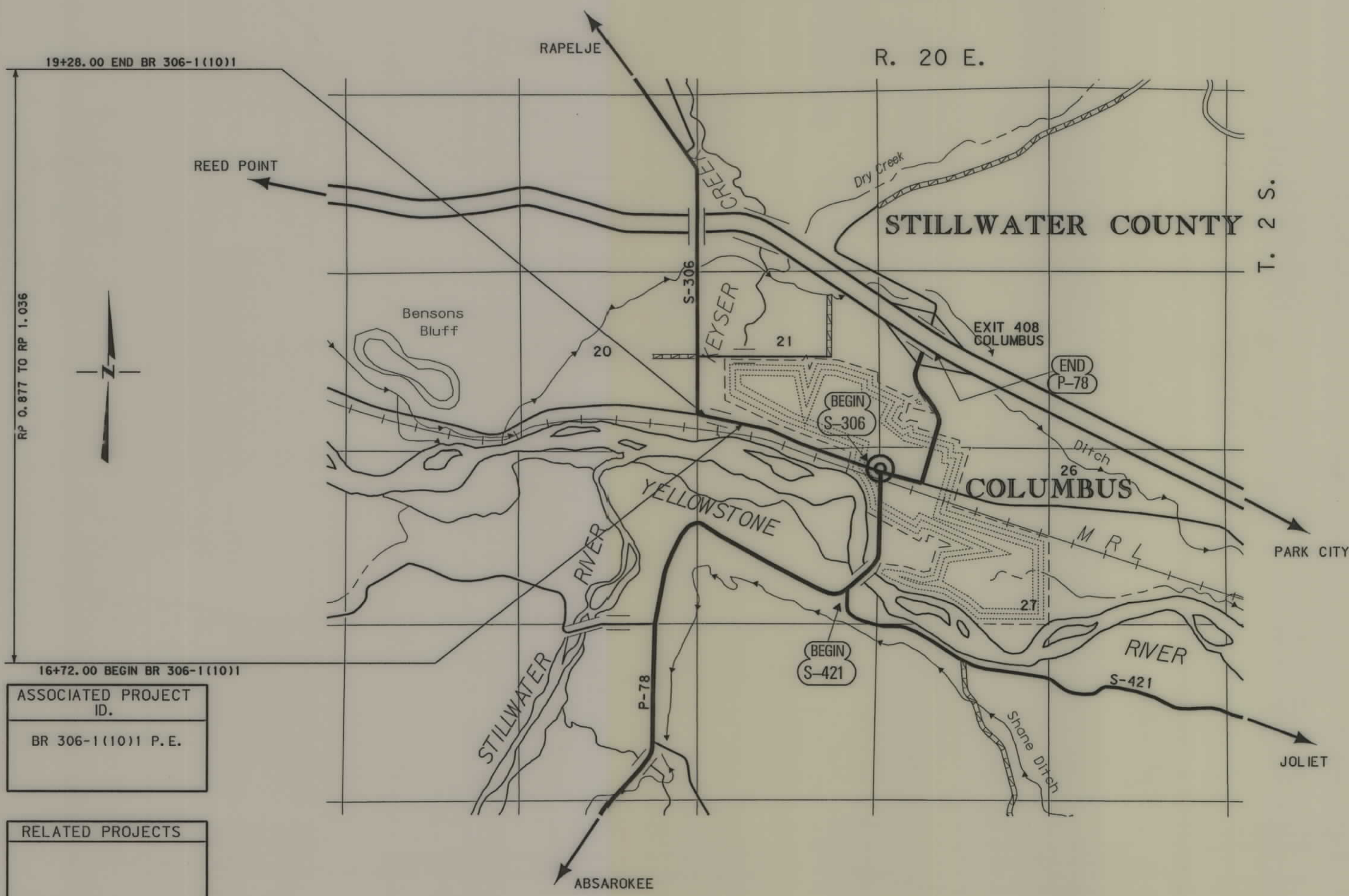
# MONTANA DEPARTMENT OF TRANSPORTATION

STATE	RIGHT OF WAY ID.	SHEET NO.	TOTAL SHEETS
MONTANA	BR 306-1(13)1	1	5
PROJECT NUMBER 4244-013			
KEYSER CR - 2 KM W COLUMBUS			



## RIGHT OF WAY PLAN OF FEDERAL AID PROJECT NO BR 306-1(13)1 KEYSER CR - 2 KM W COLUMBUS STILLWATER COUNTY

0.40 Kilometers



SEE SHEET NO. 5 FOR OWNERSHIP NAMES, ADDRESSES, AREAS, ETC.

### GRID STATE PLANE COORDINATES

THIS IS A STATE PLANE COORDINATE PROJECT. ALL DIMENSIONS, DISTANCES AND AREAS ON THIS PROJECT ARE GRID, EXCEPT FOR THE EXISTING R/W WIDTH DIMENSION, WHICH IS RECORD. THE COMBINATION SCALE FACTOR IS 0.99950441

NOTES: 1. ALL MEASUREMENTS ARE METRIC EXCEPT AS NOTED

### CONVENTIONAL SIGNS

- PROPOSED RIGHT OF WAY LINE
- EXISTING RIGHT OF WAY LINE
- RAILROAD RIGHT OF WAY LINE
- RIGHT OF WAY BASELINE
- STK'D CENTERLINE
- SECTION LINE
- OWNERSHIP BOUNDARY
- FULL ACCESS CONTROL
- LIMITED ACCESS CONTROL
- EXISTING ACCESS CONTROL
- PRESENT TRAVELED WAY (P.T.W.)
- FENCE LINE
- EXISTING GUARDRAIL
- PROPOSED GUARDRAIL
- GATE IN FENCE
- CATTLE GUARD: EXIST. - PROPOSED
- SECTION CORNER
- 1/4 SECTION CORNER
- CLOSING CORNER
- MEANDER CORNER
- CENTER OF SECTION
- RIGHT OF WAY MONUMENT
- PROPERTY CORNER PIN
- POWER POLE IN PLACE
- TELEPHONE POLE IN PLACE
- TELEGRAPH POLE IN PLACE
- LIGHT POLE
- PROPOSED CULVERT
- EXISTING CULVERT
- OUTLET DITCH
- INLET DITCH
- EXISTING DITCH
- CHANNEL CHANGES
- DITCH BLOCK
- RIPRAP
- BRIDGES
- RAILROADS
- PARCEL NUMBERS
- APPROACH: EXIST.- PROPOSED

ASSOCIATED PROJECT ID.  
BR 306-1(10)1 P.E.

RELATED PROJECTS

FHWAMDT APPROVAL 5/8/02  
MAP REVISED

RDROW

MONTANA CADD

3  
2

# CONTROL DIAGRAM

SCALE 1:500

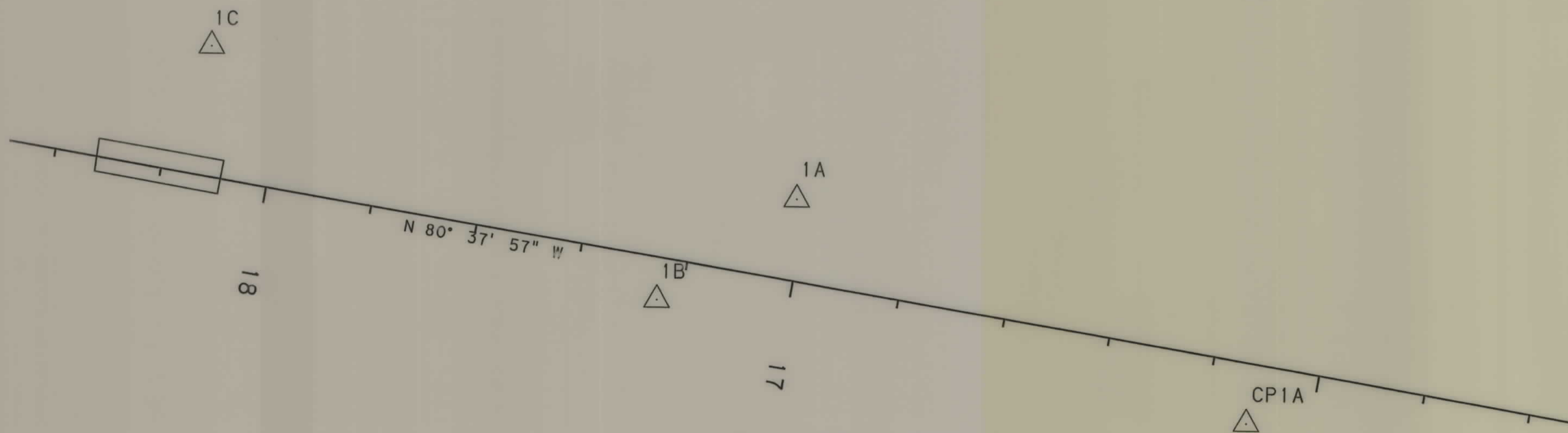
STATE	RIGHT OF WAY ID.	SHEET NO.	TOTAL SHEETS
MONTANA	BR 306-1(13)1	2	5
PROJECT NUMBER 4244-013			
KEYSER CREEK- 2 KM W COLUMBUS			

MONTANA DEPARTMENT OF TRANSPORTATION  
MONTANA CADD

NOTE:  
THIS PROJECT WAS SURVEYED UTILIZING THE GLOBAL POSITIONING SYSTEM (GPS). ALL COORDINATES ARE METRIC STATE PLANE NAD 83-1992. ALL SURVEY AND STAKING WILL REQUIRE THE USE OF A COMBINATION SCALE FACTOR (CSF). THE CSF FOR THIS PROJECT IS 0.99950441. ALL DIMENSIONS ON THE PLANS ARE GRID DIMENSIONS AND MUST BE DIVIDED BY THE CSF TO ARRIVE AT GROUND DIMENSIONS.

CONTROL ABSTRACT				
POINT NAME/NUMBER	N OR Y COORDINATE	E OR X COORDINATE	POINT ELEVATION	LOCATION AND DESCRIPTION
1A	154 606.3748	617 930.7238	1101.273	SET 51 mm ALUMINUM CAP ON A 16 mm REBAR STAMPED 1A 2000, MP 0.48 km, 13.6 m RIGHT (NORTH) OF PTW HIGHWAY 10, 1.1 m N & 0.5 m W OF WITNESS POST.
1B	154 587.2688	617 904.8597	1097.756	SET 51 mm ALUMINUM CAP ON A 16 mm REBAR STAMPED 1B 2000, MP 0.51 km, 8.15 m LEFT (SOUTH) OF PTW HIGHWAY 10, 1.07 m N OF WITNESS POST.
1C	154 633.7377	617 821.0117	1095.558	SET 51 mm ALUMINUM CAP ON A 16 mm REBAR STAMPED 1C 2000, MP 0.60 km, 24.08 m RIGHT (NORTH) OF PTW HIGHWAY 10, 0.8 m S OF WITNESS POST.
1D	154 760.5736	617 799.5107	1101.125	SET 51 mm ALUMINUM CAP ON A 16 mm REBAR STAMPED 1D 2000, MP 0.62 km, 146.8 m RIGHT (NORTH) OF PTW HIGHWAY 10, 1.48 m E OF WITNESS POST.
CP1A	154 565.6434	618 015.2973	1097.277	FOUND MSE-HKM CONTROL POINT APPROXIMATELY 500 m EAST ALONG HIGHWAY R/W FROM THE INTERSECTION OF RAPELJE ROAD AND THE HIGHWAY, 11.5 m LEFT (SOUTH) OF PTW HIGHWAY 10 AT MP 0.32 km.

NOTE - VERTICAL CONTROL ESTABLISHED FROM CONTROL POINTS.



### GRID STATE PLANE COORDINATES

THIS IS A STATE PLANE COORDINATE PROJECT. ALL DIMENSIONS, DISTANCES AND AREAS ON THIS PROJECT ARE GRID, EXCEPT FOR THE EXISTING R/W WIDTH DIMENSION, WHICH IS RECORD. THE COMBINATION SCALE FACTOR IS 0.99950441

- NOTES:
- ALL MEASUREMENTS ARE METRIC EXCEPT AS NOTED
  - THE PROPOSED R/W LINE WHERE A SPIRAL CURVE TRANSITION IS USED IS A CHORD RATHER THAN A CONCENTRIC CURVE.
  - THE ENGLISH AREAS ARE FOR INFORMATIONAL PURPOSES ONLY.
  - ALL STATIONS AND OFFSETS FOR R/W BREAKS ARE IN REFERENCE TO THE R/W BASELINE.

BACKSLOPE LIMITS INCLUDE ROUNDING  
CONSTRUCTION LIMITS: CUT SECTION TOP OF CUT  
TOE OF FILL DITCH BOTTOM

FHWA/DOT APPROVAL 5/08/02

MAP REVISED

MONTANA  
DEPARTMENT OF TRANSPORTATION

RIGHT OF WAY PLAN  
STILLWATER COUNTY

RDROW

V:\4244\ROSU\MO02.dgn  
08/12/03  
08:51:34 AM  
U0725

STATE	RIGHT OF WAY ID.	SHEET NO.	TOTAL SHEETS
MONTANA	BR 306-1(13)1	3	5
PROJECT NUMBER 4244-013		KEYSER CR - 2 KM W COLUMBUS	

POINT NO.	NORTHING	EASTING	DESCRIPTION
1339	154,646.8680	617,696.1700	RW 19+40.00 17.00 m RT
1340	154,657.7480	617,600.6676	RW 20+36.00 12.18 m RT R/W=EX RW
1307	154,634.0200	617,780.2000	RW 18+55 18.00 m RT
1308	154,625.0674	617,834.4661	RW 18+00.00 18.00 m RT
1341	154,646.5728	617,716.3919	RW 19+20.00 20.00 m RT
1304	154,622.2080	617,894.8054	RW 17+20 25 m RT
1313	154,604.6080	617,953.8910	RW = PC=RR
1330	154,578.8980	618,078.6160	EXT RW 15+51.591 12.186 m RT END RR TAKE
6	154,574.5870	617,947.7600	RW 16+80 13.37 M LT=RR@ 30.45 M
1329	154,594.3780	617,748.3230	RW 18+80.00 26.30 M LT= RR@30.45 M
1306	154,609.0780	617,710.2060	RW 19+20 18.00 M LT
1303	154,622.0990	617,631.2730	RW 20+00.00 18.00 M LT
1416	154,603.4394	617,977.8580	RW 16+55.00, 20.00 M RT
1417	154,610.1229	617,943.4875	RW 16+90.00, 21.00 M RT
1431	154,598.8810	618,011.6060	RW = PL = RR/RW
240	154,561.7394	618,182.6274	14+46.17 12.19 RT FND REBAR HWY PC R/W
280	154,660.1608	617,585.9998	20+50.87 12.18 m RT FOUND EX R/W MON
284	154,635.4541	617,586.0355	20+46.81 12.19 m LT FOUND EX R/W MON
288	154,537.6917	618,178.6602	14+46.17 12.19 m LT FND EX R/W MON PC R/W

POINT NO.	NORTHING	EASTING	DESCRIPTION
1002	154,395.5000	618,596.4107	PC 10+00.00
1003	154,512.9556	618,403.4924	PI 12+25.86
1004	154,549.7160	618,180.6440	PT 14+46.17
1005	154,651.2960	617,564.8860	POT 20+70.25
1006	153,401.4763	617,991.2235	CC R 1163.7588

POINT NO.	NORTHING	EASTING	DESCRIPTION
1002	154,395.5001	618,596.4107	PC 10+00.00
1003	154,512.9541	618,403.4922	PI 12+25.86
1004	154,549.7166	618,180.6435	PT 14+46.17
1406	154,586.4740	617,957.8257	POT 16+72.00, BEGIN PROJECT
1407	154,628.1422	617,705.2396	POT 19+28.00, END PROJECT

RIGHT-OF-WAY COORDINATE ASCII FILES  
R/W BREAK COORDINATES: 4244ROBRK001.TXT  
R/W BASELINE COORDINATES: 4244ROBAS001.TXT  
ALL FILES ARE LOCATED ON THE CADD SERVER  
IN THE RO DIRECTORY, UNDER PROJECT: 4244

GRID STATE PLANE COORDINATES  
THIS IS A STATE PLANE COORDINATE PROJECT.  
ALL DIMENSIONS, DISTANCES AND AREAS ON THIS  
PROJECT ARE GRID, EXCEPT FOR THE EXISTING  
R/W WIDTH DIMENSION, WHICH IS RECORD. THE  
COMBINATION SCALE FACTOR IS 0.99950441

- NOTES: 1. ALL MEASUREMENTS ARE METRIC EXCEPT AS NOTED  
2. THE PROPOSED R/W LINE WHERE A SPIRAL CURVE TRANSITION IS USED IS A CHORD RATHER THAN A CONCENTRIC CURVE.  
3. THE ENGLISH AREAS ARE FOR INFORMATIONAL PURPOSES ONLY.  
4. ALL STATIONS AND OFFSETS FOR R/W BREAKS ARE IN REFERENCE TO THE R/W BASELINE.

BACKSLOPE LIMITS INCLUDE ROUNDING	CONSTRUCTION LIMITS:
FHWA/DOT APPROVAL	5-08-02
MAP REVISED	8-28-03

MONTANA DEPARTMENT OF TRANSPORTATION  
RIGHT OF WAY PLAN  
STILLWATER COUNTY



OWNERSHIP

PARCEL	NAME	ADDRESS	TOTAL AREA		GROSS R/W AREA		EX. EASE. AREA		NET AREA		REMAINDER				CONST. PMT. AREA		EASE. AREA		SHEET NO.
			METRIC	ENGLISH	METRIC	ENGLISH	METRIC	ENGLISH	METRIC	ENGLISH	LEFT		RIGHT		METRIC	ENGLISH	METRIC	ENGLISH	
											METRIC	ENGLISH	METRIC	ENGLISH					
1	JRM CORPORATION, A MONTANA CORP.	PO BOX 599, COLUMBUS, MT 59019	2.986 ha	7.38 AC	0.114 ha	0.28 AC			0.114 ha	0.28 AC			2.872 ha	7.10 AC					4, 5
2	THE MONTANA POWER CO	40 EAST BROADWAY, BUTTE, MT 59701-9989	0.040 ha	0.10 AC	* 0.008 ha	* 0.02 AC			* 0.008 ha	* 0.02 AC			0.032 ha	0.08 AC					5
3	TOWN OF COLUMBUS	COLUMBUS, MT 59019	3.222 ha	7.96 AC	* 0.287 ha	* 0.71 AC	* 0.197 ha	* 0.49 AC	* 0.090 ha	* 0.22 AC			2.935 ha	7.25 AC					5
4	BURLINGTON NORTHERN & SANTA FE	2605 LOU MENK DRIVE, FORTWORTH, TEXAS 76131			1.267 ha	3.13 AC	0.877 ha	2.17 AC	0.390 ha	0.96 AC					0.364 ha	0.90 AC			4, 5
5	JILL R. & CHAD FERRIS	1138 KOOTENAI, BILLINGS, MT 59105	0.303 ha	0.74 AC	0.011 ha	0.03 AC			0.011 ha	0.03 AC			0.298 ha	0.71 AC					4

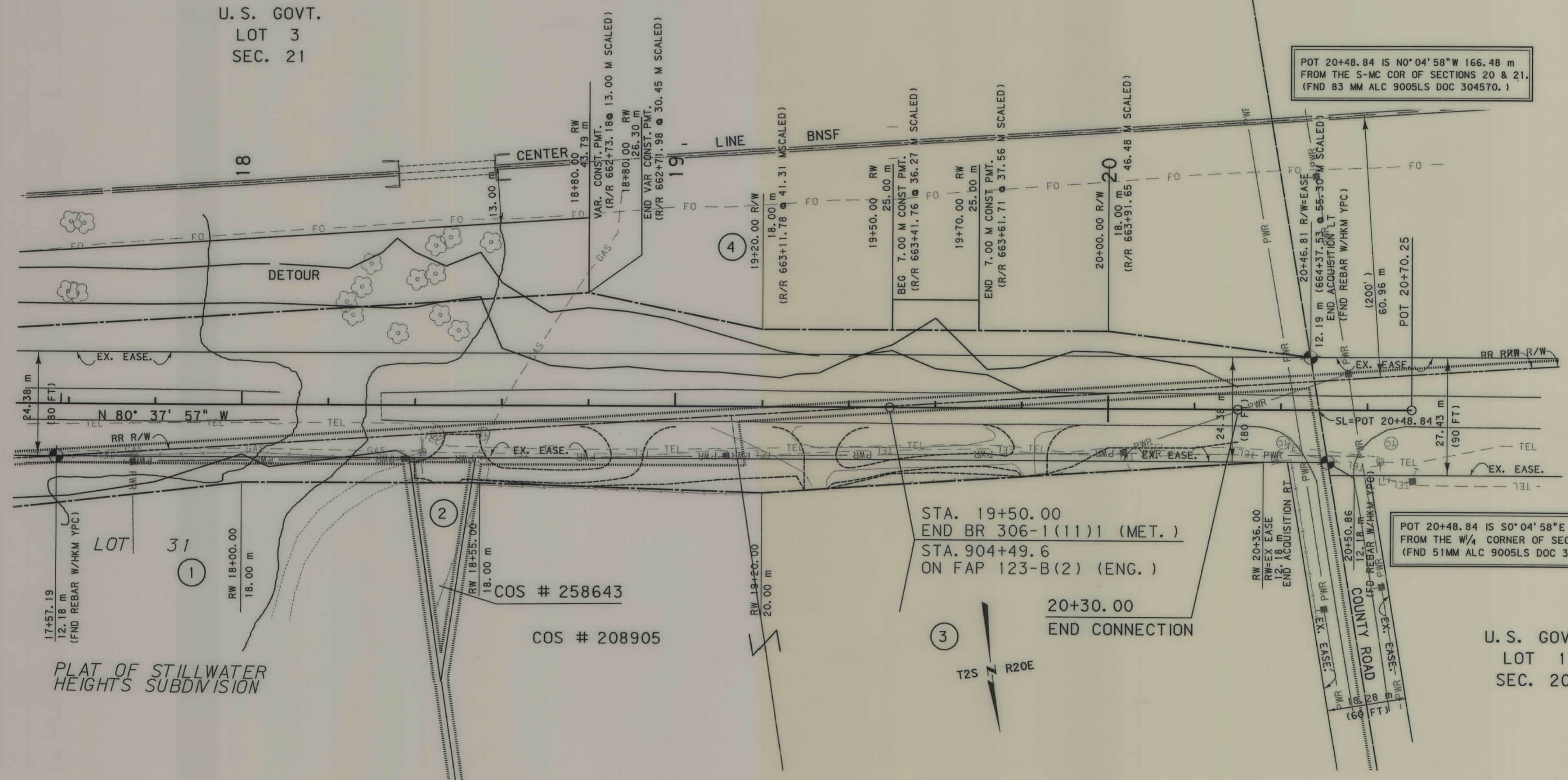
STATE	RIGHT OF WAY ID.	SHEET NO.	TOTAL SHEETS
MONTANA	BR 306-1(13)1	5	5
PROJECT NUMBER 4244-013			
KEYSER CR - 2 KM W COLUMBUS			

\* TO BE ACQUIRED AS EASEMENT

U. S. GOVT.  
LOT 3  
SEC. 21

POT 20+48.84 IS N0°04'58"W 166.48 m  
FROM THE S-MC COR OF SECTIONS 20 & 21.  
(FND 83 MM ALC 9005LS DOC 304570.)

POT 20+48.84 IS S0°04'58"E 521.32 m  
FROM THE W/4 CORNER OF SECTION 21.  
(FND 51MM ALC 9005LS DOC 304568.)



MONTANA DEPARTMENT OF TRANSPORTATION  
MONTANA CADD

RDROW

4244R01.P.L. DGN  
12/23/03  
08:01:06 AM  
U6272

GRID STATE PLANE COORDINATES

FOR EXISTING R/W RETRACEMENT, SEE COS#304857 SHOWING SURVEY BY SCOTT D. BLOOMENRADER 9005 S

THIS IS A STATE PLANE COORDINATE PROJECT. ALL DIMENSIONS, DISTANCES AND AREAS ON THIS PROJECT ARE GRID, EXCEPT FOR THE EXISTING R/W WIDTH DIMENSION, WHICH IS RECORD. THE COMBINATION SCALE FACTOR IS 0.99950441

- NOTES:
1. ALL MEASUREMENTS ARE METRIC EXCEPT AS NOTED
  2. THE PROPOSED R/W LINE WHERE A SPIRAL CURVE TRANSITION IS USED IS A CHORD RATHER THAN A CONCENTRIC CURVE.
  3. THE ENGLISH AREAS ARE FOR INFORMATIONAL PURPOSES ONLY.
  4. ALL STATIONS AND OFFSETS FOR R/W BREAKS ARE IN REFERENCE TO THE R/W BASELINE.

BACKSLOPE LIMITS INCLUDE ROUNDING	CONSTRUCTION LIMITS:	CUT SECTION	TOE OF FILL
		TOP OF CUT	BOTTOM
FHWA/DOT APPROVAL	5/08/02		
MAP REVISED	8/28/03 12-11-03		
	12-23-03		

MONTANA DEPARTMENT OF TRANSPORTATION

RIGHT OF WAY PLAN  
STILLWATER COUNTY  
SCALE 1:500