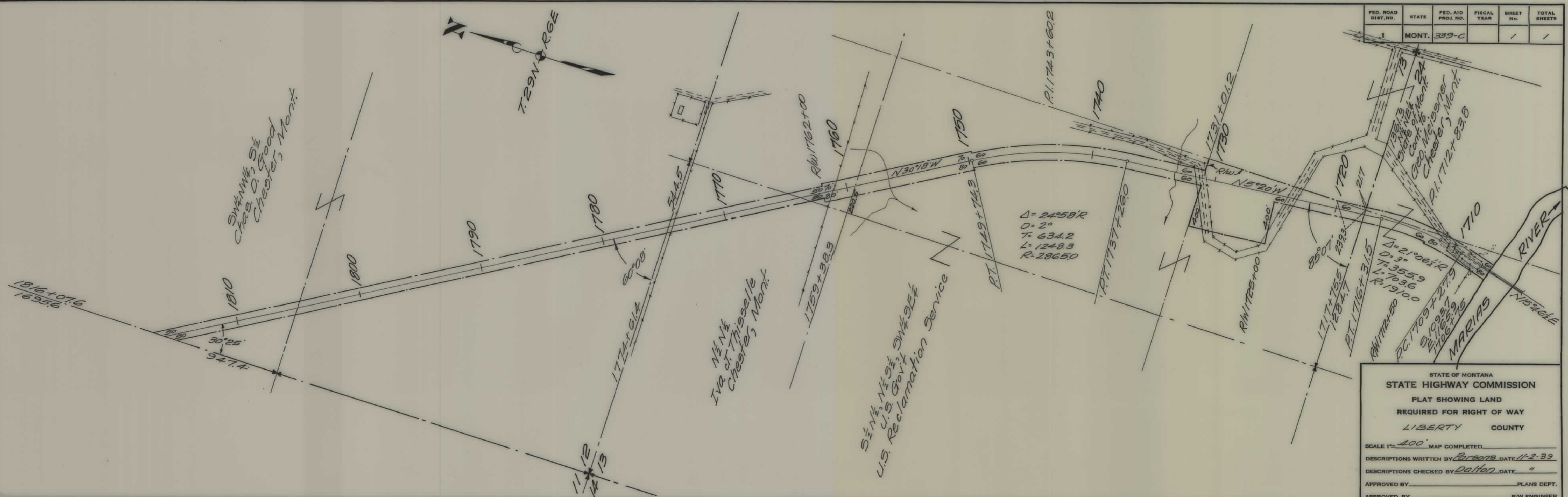


PLANS
NOT
TO
SCALE



FED. ROAD DIST. NO.	STATE	FED. AID PROJ. NO.	FISCAL YEAR	SHEET NO.	TOTAL SHEETS
1	MONT.	339-C		1	1

STATE OF MONTANA
STATE HIGHWAY COMMISSION
PLAT SHOWING LAND
REQUIRED FOR RIGHT OF WAY
LIBERTY COUNTY

SCALE 1"=400' MAP COMPLETED

DESCRIPTIONS WRITTEN BY Parsons DATE 11-2-39

DESCRIPTIONS CHECKED BY Dalton DATE "

APPROVED BY _____ PLANS DEPT.

APPROVED BY _____ R/W ENGINEER