

PLANS
NOT
TO
SCALE

1

2 P.I. 391+79.0

60

390

R/W

396+387

R/W

97+34.8

400

1

STATE OF MONTANA

STATE HIGHWAY COMMISSION

PLAT SHOWING LAND

REQUIRED FOR RIGHT OF WAY

VALLEY COUNTY

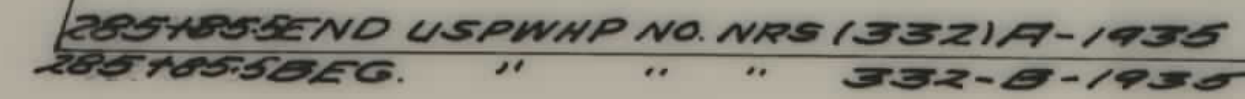
SCALE 1" = 100'. MAP COMPLETED _____

DESCRIPTIONS WRITTEN BY _____ DATE _____

DESCRIPTIONS CHECKED BY _____ DATE _____

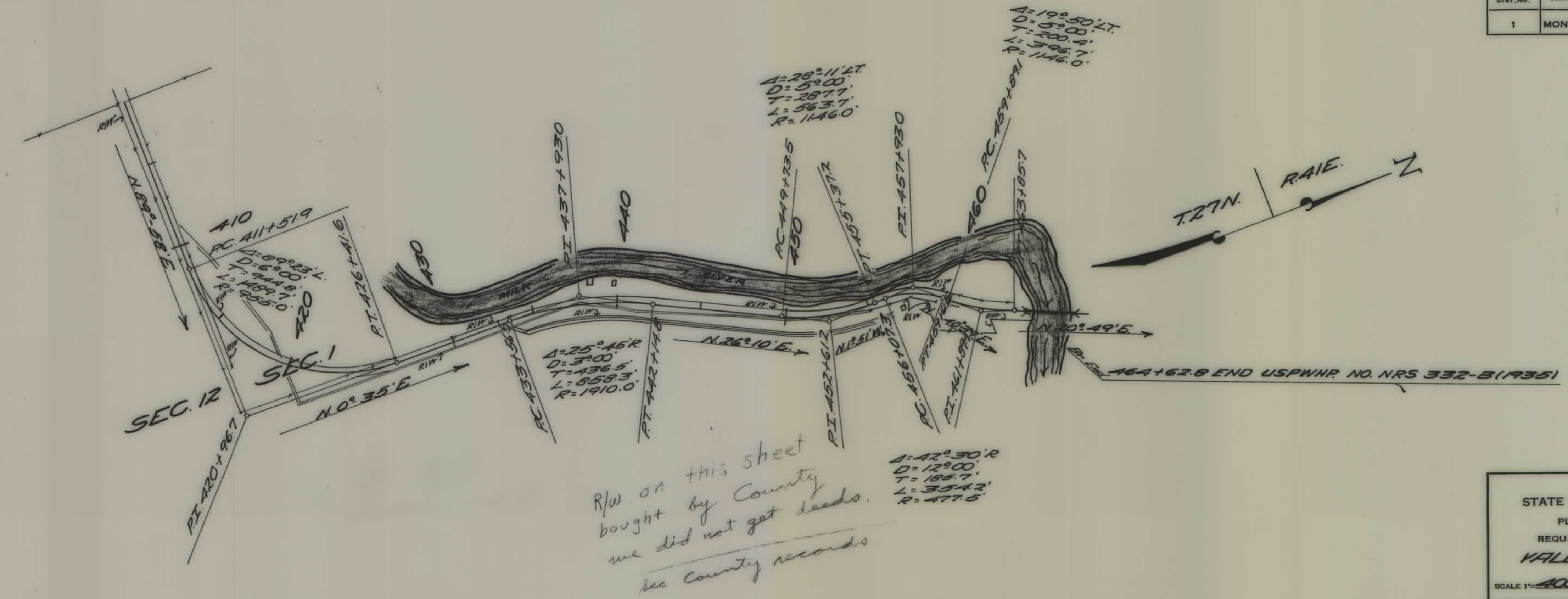
APPROVED BY _____ PLANS DEPT. _____

APPROVED BY _____ R/W ENGINEER _____



2

| FED. ROAD DIST. NO. | STATE | FED. AID PROJ. NO. | FISCAL YEAR | SHEET NO. | TOTAL SHEETS |
|---------------------|-------|--------------------|-------------|-----------|--------------|
| 1 | MONT. | 332-B | | 2 | 2 |



STATE OF MONTANA
STATE HIGHWAY COMMISSION
PLAT SHOWING LAND
REQUIRED FOR RIGHT OF WAY
VALLEY COUNTY

SCALE 1"=400' MAP COMPLETED _____
 DESCRIPTIONS WRITTEN BY _____ DATE _____
 DESCRIPTIONS CHECKED BY _____ DATE _____
 APPROVED BY _____ PLANS DEPT. _____
 APPROVED BY _____ R/W ENGINEER _____