

PLANS
NOT
TO
SCALE

FED. ROAD DIST. NO.	STATE	FED. AID PROJ. NO.	FISCAL YEAR	SHEET NO.	TOTAL SHEETS
1	MONT.	334 A		1	5



N $\frac{1}{2}$ SW $\frac{1}{4}$
Dewey K. Bottles
Olive, Mont.

SE $\frac{1}{4}$
Dewey K. Bottles
Olive, Mont.

575+
New 38' Bridge

SE $\frac{1}{4}$ SW $\frac{1}{4}$
Elina A. Page
Leeds, N.D.

560

721.3
RW

571+25.3
108%
570

580

590

600

T.4S R.49E

T.4S R.50E

599+02.1
40100

13

18

24

1021.1

STA 559+11.0 END 334-B
STA 559+11.0 BEG 334-A

STATE OF MONTANA
STATE HIGHWAY COMMISSION
PLAT SHOWING LAND
REQUIRED FOR RIGHT OF WAY
POWDER RIVER COUNTY

SCALE 1" = 400' MAP COMPLETED 12-30-35
DESCRIPTIONS WRITTEN BY E.O.P. DATE 12-26-35
DESCRIPTIONS CHECKED BY T.P.J. DATE 12-30-35
APPROVED BY _____ PLANS DEPT.
APPROVED BY _____ R/W ENGINEER

FED. ROAD DIST. NO.	STATE	FED. AID PROJ. NO.	FISCAL YEAR	SHEET NO.	TOTAL SHEETS
1	MONT.	334A		2	5

$E\frac{1}{2}W\frac{1}{2}, W\frac{1}{2}E\frac{1}{2}$
William F. Murray
Miles City, Mont.

$\Delta = 9^{\circ}33'2"$
 $D = 1^{\circ}$
 $T = 478.6$
 $L = 955.0$
 $R = 5730.0$

$E\frac{1}{2}SE\frac{1}{4}$ Joy or
Osker, Mont.

$S\frac{1}{2}SW\frac{1}{4}$ T.4S R.50E

$N\frac{1}{2}NE\frac{1}{4}$
John D. Bowen
Olathe, Colo.

$NW\frac{1}{4}$
F.O. Tarbox

Lot 4
U.S. Gov't.

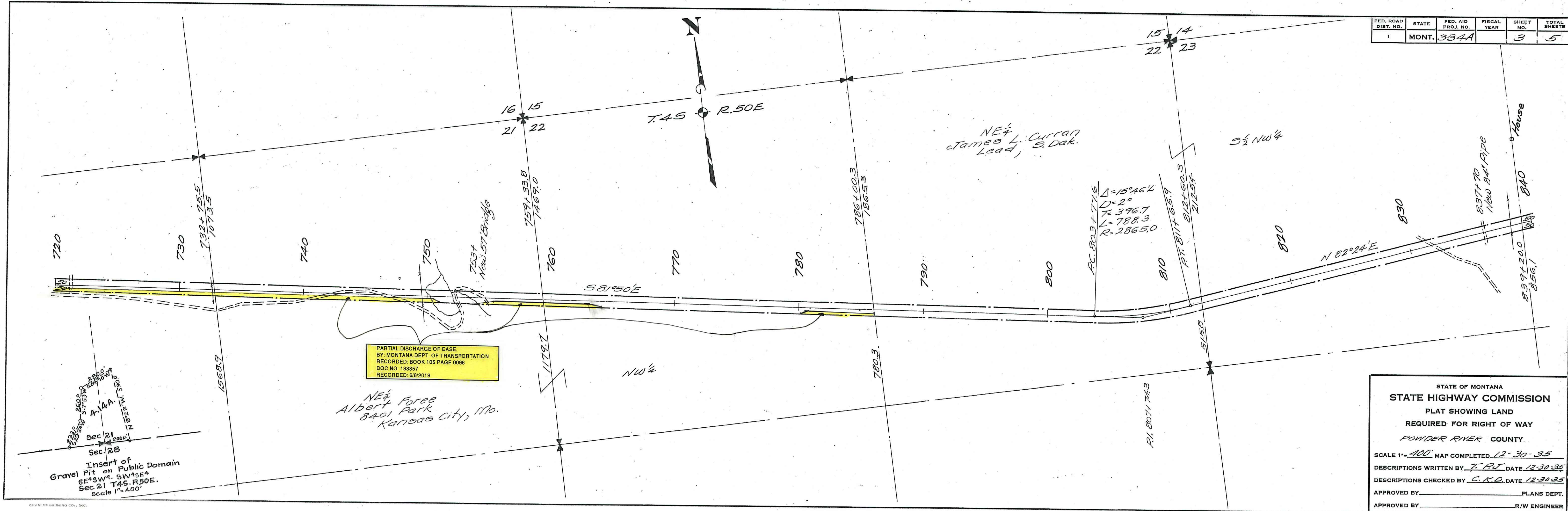
Secure right
to ch. ch. 21 & 22
70.3

70.3+
New 57' Bridge

PARTIAL DISCHARGE OF EASE
BY: MONTANA DEPT. OF TRANSPORTATION
RECORDED: BOOK 105 PAGE 0096
DOC NO: 138857
RECORDED: 6/6/2019

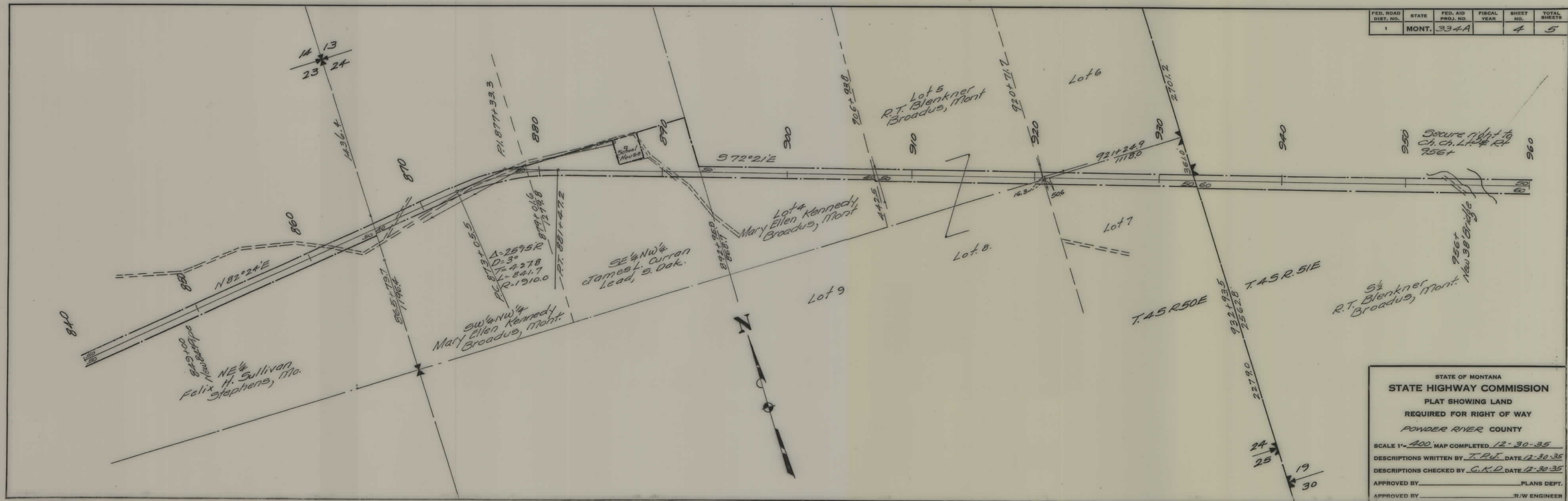
STATE OF MONTANA
STATE HIGHWAY COMMISSION
PLAT SHOWING LAND
REQUIRED FOR RIGHT OF WAY
POWDER RIVER COUNTY
SCALE 1" = 400' MAP COMPLETED 12-30-35
DESCRIPTIONS WRITTEN BY T.P.J. DATE 12-30-35
DESCRIPTIONS CHECKED BY C.K.D. DATE 12-30-35
APPROVED BY _____ PLANS DEPT.
APPROVED BY _____ R/W ENGINEER

FED. ROAD DIST. NO.	STATE	FED. AID PROJ. NO.	FISCAL YEAR	SHEET NO.	TOTAL SHEETS
1	MONT.	334A		3	5



4

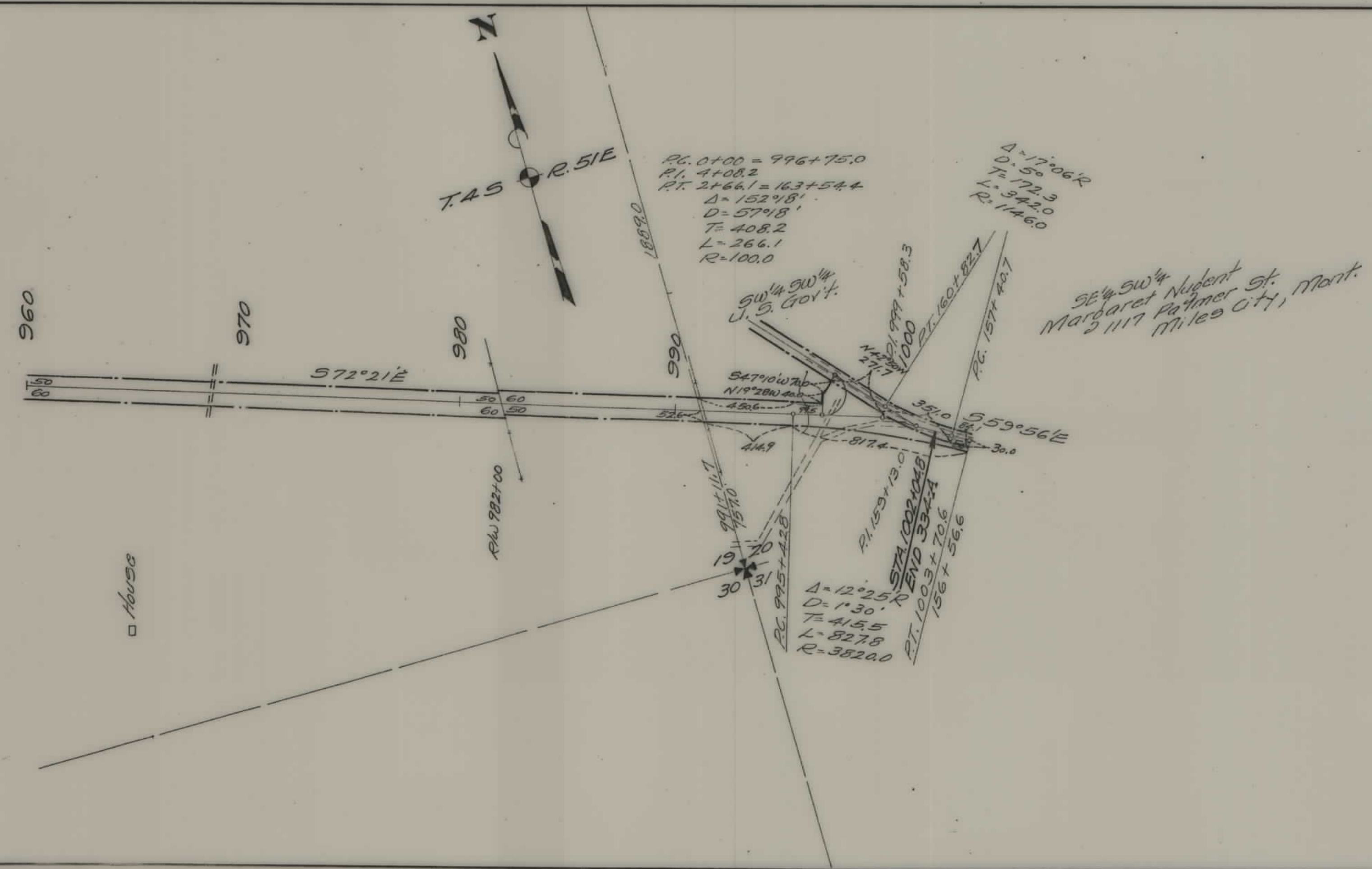
FED. ROAD DIST. NO.	STATE	FED. AID PROJ. NO.	FISCAL YEAR	SHEET NO.	TOTAL SHEETS
1	MONT.	334A		4	5



STATE OF MONTANA
 STATE HIGHWAY COMMISSION
 PLAT SHOWING LAND
 REQUIRED FOR RIGHT OF WAY
 POWDER RIVER COUNTY

SCALE 1" = 400' MAP COMPLETED 12-30-35
 DESCRIPTIONS WRITTEN BY T.P.J. DATE 12-30-35
 DESCRIPTIONS CHECKED BY C.K.D. DATE 12-30-35
 APPROVED BY _____ PLANS DEPT.
 APPROVED BY _____ R/W ENGINEER

FED. ROAD DIST. NO.	STATE	FED. AID PROJ. NO.	FISCAL YEAR	SHEET NO.	TOTAL SHEETS
1	MONT.	334A		5	5



STATE OF MONTANA
 STATE HIGHWAY COMMISSION
 PLAT SHOWING LAND
 REQUIRED FOR RIGHT OF WAY
 POWDER RIVER COUNTY

SCALE 1"=400' MAP COMPLETED 12-30-35
 DESCRIPTIONS WRITTEN BY T.P.J. DATE 12-30-35
 DESCRIPTIONS CHECKED BY C.K.D. DATE 12-30-35

APPROVED BY _____ PLANS DEPT.
 APPROVED BY _____ R/W ENGINEER