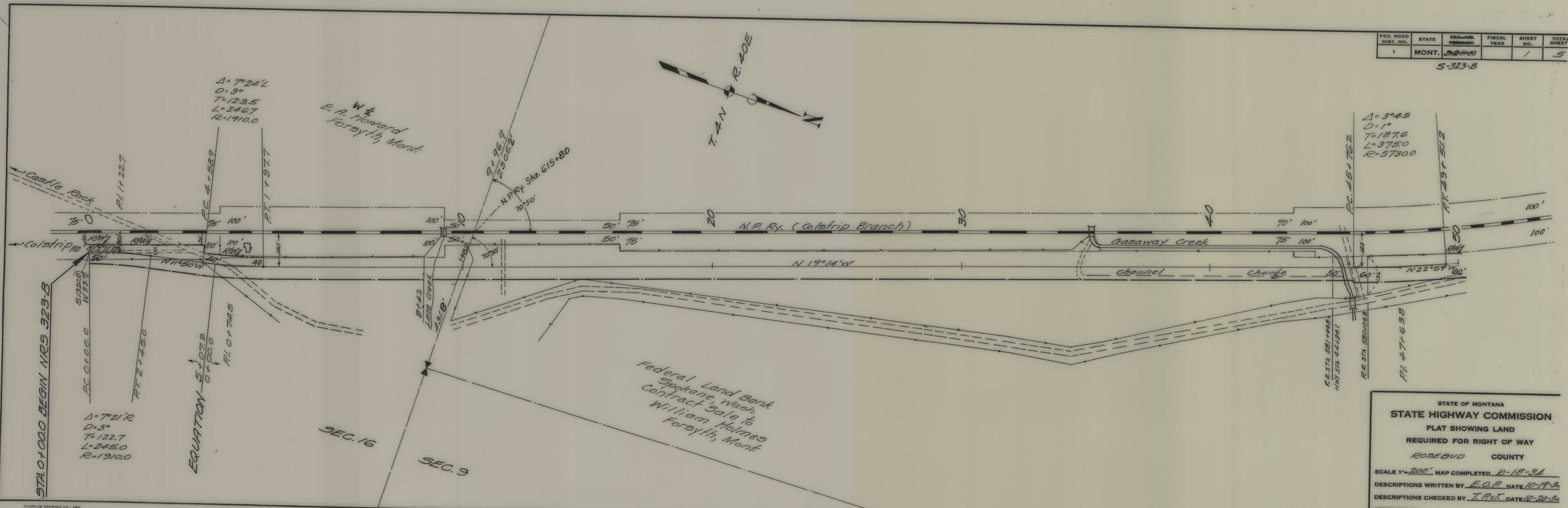


PLANS  
NOT  
TO  
SCALE

FED. ROAD DIST. NO.	STATE	FED. AID DIST. NO.	FISCAL YEAR	SHEET NO.	TOTAL SHEET
1	MONT.	325-B		1	5

5-323-B



STATE OF MONTANA  
**STATE HIGHWAY COMMISSION**  
 PLAT SHOWING LAND  
 REQUIRED FOR RIGHT OF WAY  
 ROSEBUD COUNTY

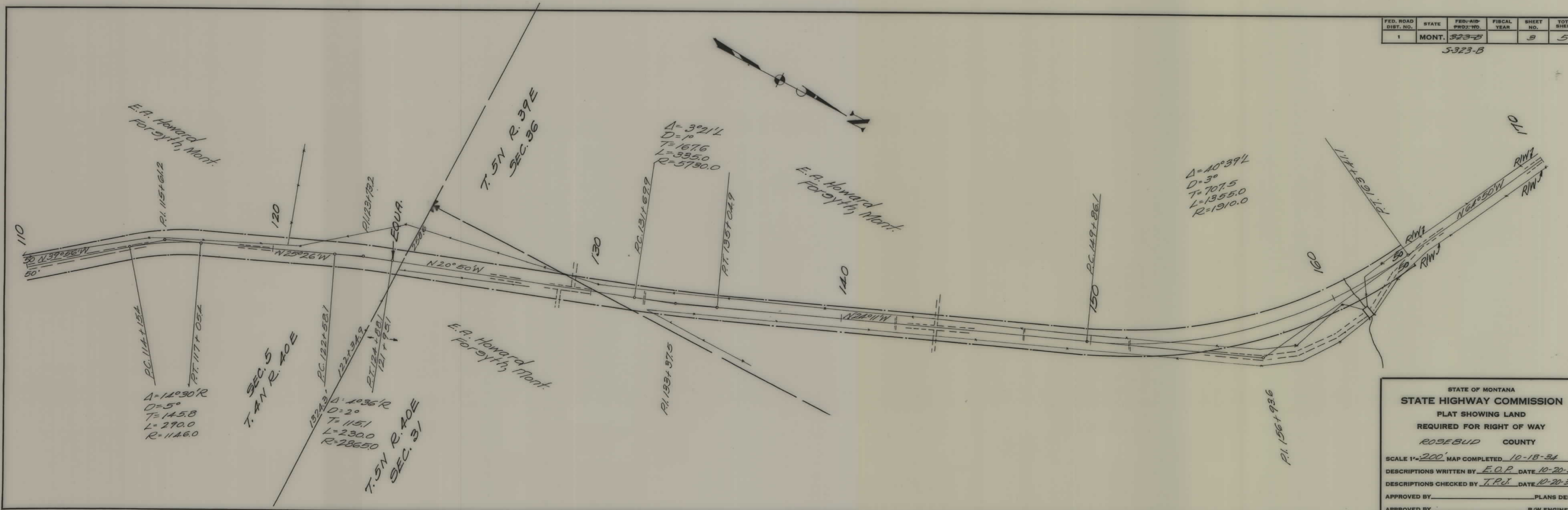
SCALE 1" = 200' MAP COMPLETED 10-18-31  
 DESCRIPTIONS WRITTEN BY E.O.P. DATE 10-19-31  
 DESCRIPTIONS CHECKED BY T.P.J. DATE 10-20-31

APPROVED BY \_\_\_\_\_ PLANS DEP  
 APPROVED BY \_\_\_\_\_ R/W ENGINEER



FED. ROAD DIST. NO.	STATE	FED-AID PROJ. NO.	FISCAL YEAR	SHEET NO.	TOTAL SHEETS
1	MONT.	323-B		3	5

5-323-B

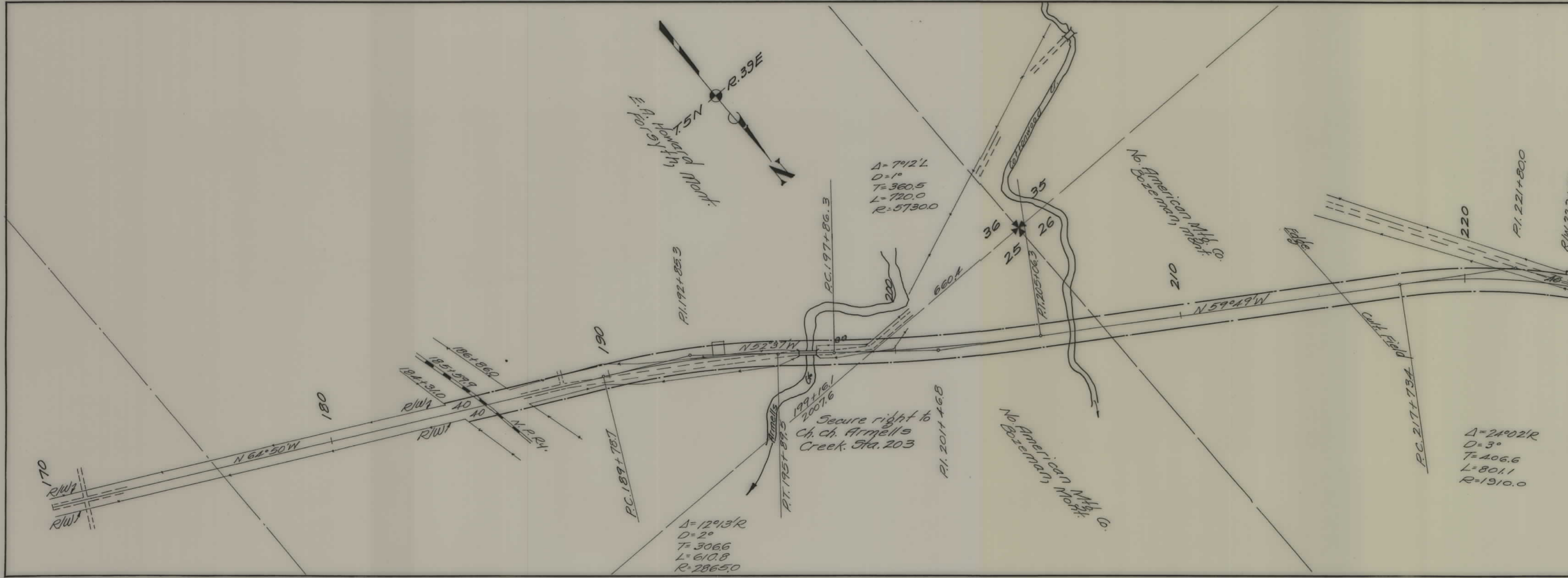


STATE OF MONTANA  
 STATE HIGHWAY COMMISSION  
 PLAT SHOWING LAND  
 REQUIRED FOR RIGHT OF WAY  
 ROSEBUD COUNTY

SCALE 1" = 200' MAP COMPLETED 10-18-34  
 DESCRIPTIONS WRITTEN BY E.O.P. DATE 10-20-34  
 DESCRIPTIONS CHECKED BY T.P.J. DATE 10-20-34  
 APPROVED BY \_\_\_\_\_ PLANS DEI  
 APPROVED BY \_\_\_\_\_ R/W ENGINEER

FED. ROAD DIST. NO.	STATE	FED. AID PROJ. NO.	FISCAL YEAR	SHEET NO.	TOTAL SHEET
1	MONT.	5238		4	5

5-323-B



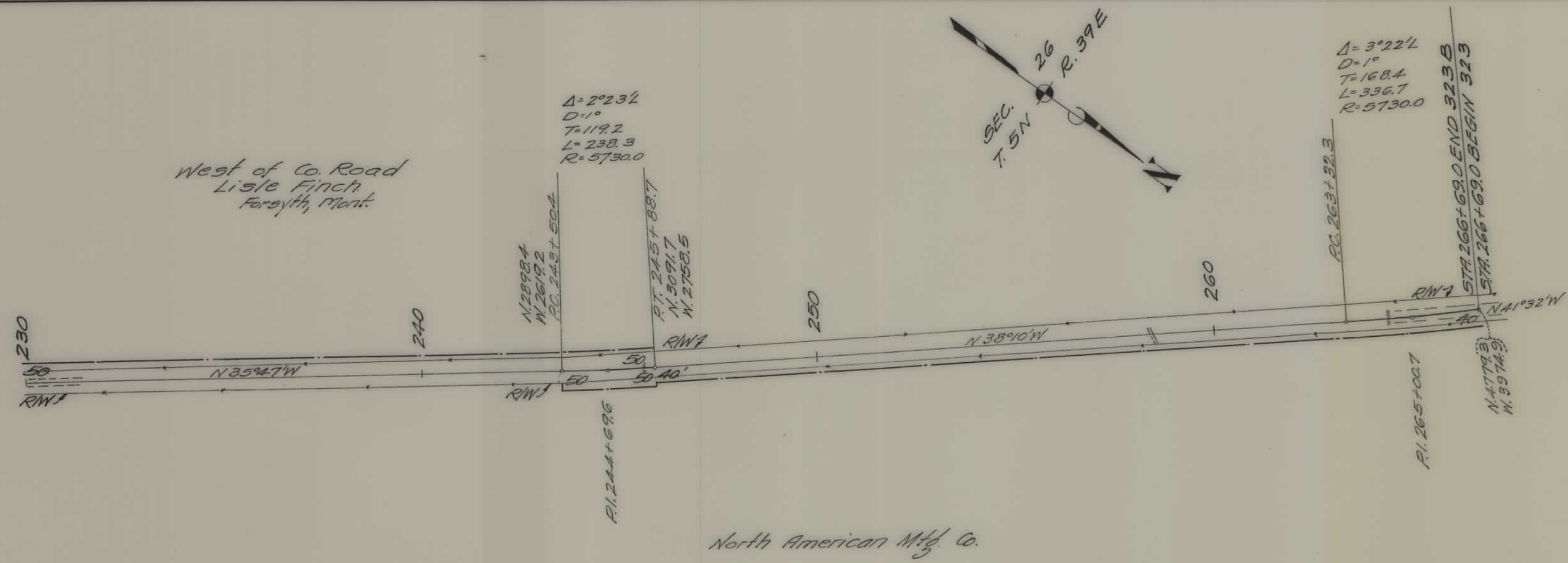
STATE OF MONTANA  
**STATE HIGHWAY COMMISSION**  
 PLAT SHOWING LAND  
 REQUIRED FOR RIGHT OF WAY  
 ROSEBUD COUNTY

SCALE 1"=200' MAP COMPLETED 10-18-34  
 DESCRIPTIONS WRITTEN BY E.O.P. DATE 10-19-34  
 DESCRIPTIONS CHECKED BY T.P.J. DATE 10-20-34

APPROVED BY \_\_\_\_\_ PLANS DEP  
 APPROVED BY \_\_\_\_\_ R/W ENGINEER

FED. ROAD DIST. NO.	STATE	FED. AID PROJ. NO.	FISCAL YEAR	SHEET NO.	TOTAL SHEET
1	MONT.	323B		5	5

J-323B



STATE OF MONTANA  
**STATE HIGHWAY COMMISSION**  
 PLAT SHOWING LAND  
 REQUIRED FOR RIGHT OF WAY  
 ROSEBUD COUNTY

SCALE 1" = 200' MAP COMPLETED 10-18-34  
 DESCRIPTIONS WRITTEN BY E.O.P. DATE 10-19-34  
 DESCRIPTIONS CHECKED BY T.P.J. DATE 10-20-34  
 APPROVED BY \_\_\_\_\_ PLANS DEF  
 APPROVED BY \_\_\_\_\_ R/W ENGINEER