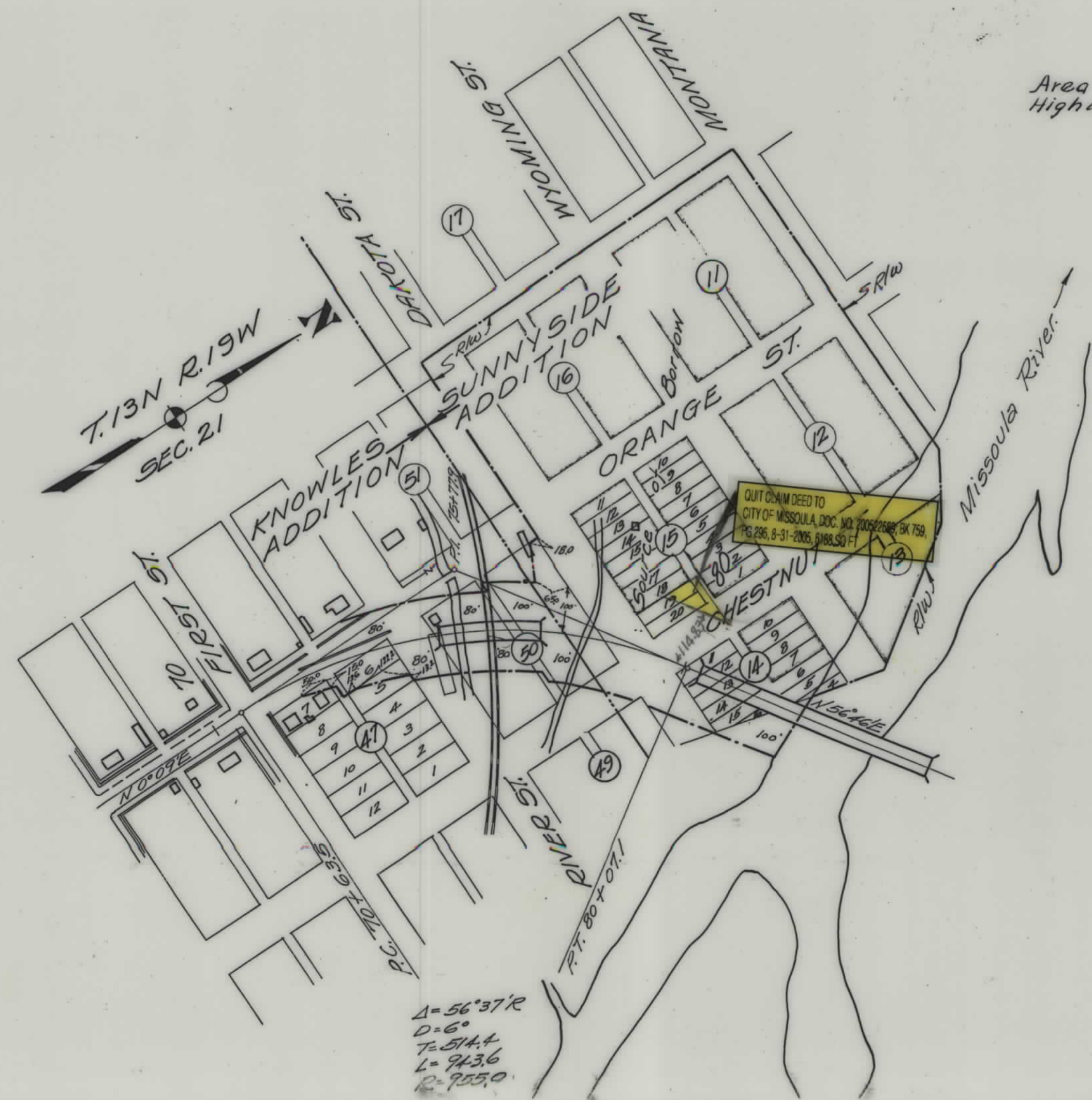


PLANS  
NOT  
TO  
SCALE



Area outlined in red deeded from State  
Highway Comm. to City of Missoula  
Sept 20, 1937

DIST. NO.	STATE	FED. AID PROJ. NO.	SHEET NO.	TOTAL SHEETS
1	MONT.	374-A	1	2

S-374-A

MISSOULA COUNTY  
SCALE 1" = 200'

STATE OF MONTANA  
STATE HIGHWAY COMMISSION  
PLAT SHOWING LAND

# MISSOULA

DIST. NO.	STATE	FED. AID PROJ. NO.	SHEET NO.	TOTAL SHEETS
1	MONT.	374-A	2	2

Area outlined in Red Deeded from State Highway Comm. to City of Missoula Sept. 20, 1957

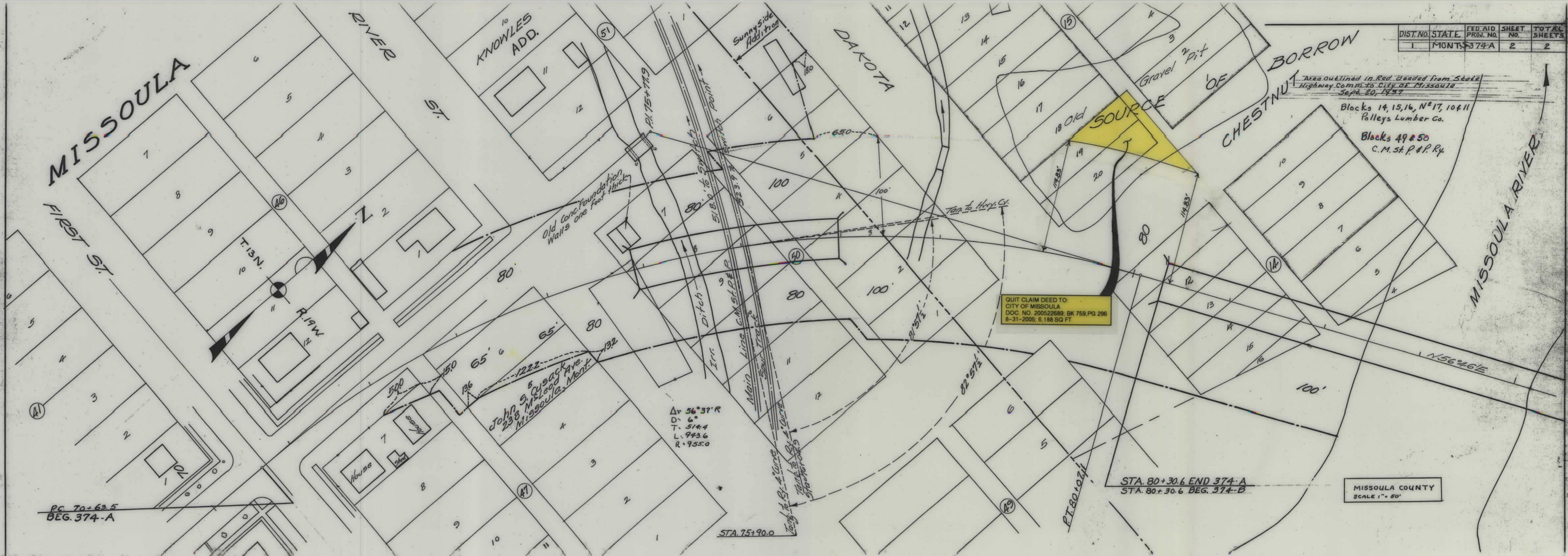
Blocks 14, 15, 16, N<sup>o</sup> 17, 10 & 11 Polleys Lumber Co.

Blocks 49 & 50 C.M. & P.P. Ry

QUIT CLAIM DEED TO CITY OF MISSOULA  
 DOC. NO. 200522689, BK 759, PG 296  
 8-31-2005; 6,188 SQ FT

STA. 80+30.6 END 374-A  
 STA. 80+30.6 BEG. 374-B

MISSOULA COUNTY  
 SCALE 1" = 50'



PC 70+63.5  
 BEG. 374-A

STA. 75+90.0

$\Delta$  56°37' R  
 D. 6'  
 T. 514.4  
 L. 943.6  
 R. 955.0

John S. Cusack Ave.  
 238 N. St. Leonard Ave.  
 Missoula, Mont.