

THIS PROJECT

# MONTANA DEPARTMENT OF TRANSPORTATION

STATE	RIGHT OF WAY	SHEET NO.	TOTAL SHEETS
MONTANA		1	13
R/W ID.		STPS 409-1(10)0	
PROJECT NO.		6164-010-000	

JCT US 2 - NORTH OF CHESTER

## RIGHT OF WAY PLAN FEDERAL AID PROJECT STPS 409-1(10)0 JCT US 2 - NORTH OF CHESTER

LIBERTY COUNTY

LENGTH 6.0 MILES

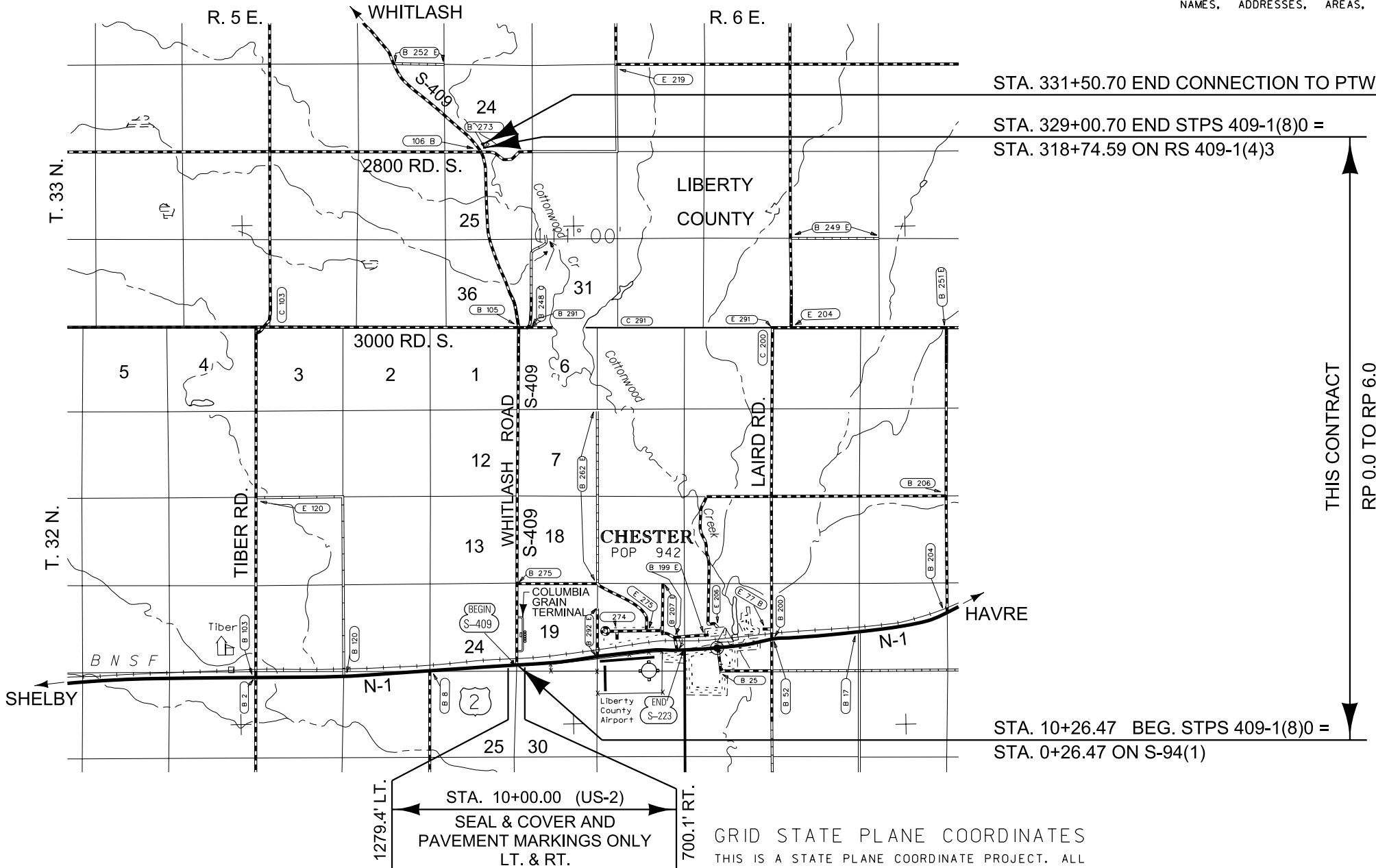
SEE SHEET NO. 2 FOR OWNERSHIP  
NAMES, ADDRESSES, AREAS, ETC.

### PLAN LEGEND

PROPOSED RIGHT OF WAY LINE	---
EXISTING RIGHT OF WAY LINE	- - - -
RAILROAD RIGHT OF WAY LINE	—+—+—+—+—
RIGHT OF WAY BASELINE	—+—+—+—+—
STK'D CENTERLINE	—+—+—+—+—
SECTION LINE	—+—+—+—+—
OWNERSHIP BOUNDARY	—+—+—+—+—
FULL ACCESS CONTROL	—+—+—+—+—
LIMITED ACCESS CONTROL	—+—+—+—+—
EXISTING FULL ACCESS CONTROL	—+—+—+—+—
EXISTING LIMITED ACCESS CONTROL	—+—+—+—+—
PRESENT TRAVELED WAY (P.T.W.)	—+—+—+—+—
FENCE LINE	—+—+—+—+—
EXISTING GUARDRAIL	—+—+—+—+—
PROPOSED GUARDRAIL	—+—+—+—+—
GATE IN FENCE	—+—+—+—+—
CATTLE GUARD: EXIST. - PROPOSED	—+—+—+—+—
SECTION CORNER	—+—+—+—+—
1/4 SECTION CORNER	—+—+—+—+—
CLOSING CORNER	—+—+—+—+—
MEANDER CORNER	—+—+—+—+—
CENTER OF SECTION	—+—+—+—+—
1/16 SECTION CORNER FOUND	—+—+—+—+—
RIGHT OF WAY MONUMENT	—+—+—+—+—
PROPERTY CORNER PIN	—+—+—+—+—
POWER POLE IN PLACE	—+—+—+—+—
TELEPHONE POLE IN PLACE	—+—+—+—+—
TELEGRAPH POLE IN PLACE	—+—+—+—+—
LIGHT POLE	—+—+—+—+—
PROPOSED CULVERT	—+—+—+—+—
EXISTING CULVERT	—+—+—+—+—
OUTLET DITCH	—+—+—+—+—
INLET DITCH	—+—+—+—+—
EXISTING DITCH	—+—+—+—+—
CHANNEL CHANGES	—+—+—+—+—
DITCH BLOCK	—+—+—+—+—
RIPRAP	—+—+—+—+—
BRIDGES	—+—+—+—+—
RAILROADS	—+—+—+—+—
PARCEL NUMBERS	—+—+—+—+—
APPROACH: EXIST.-PROPOSED	—+—+—+—+—

ASSOCIATED PROJECTS
STPS 409-1(7)0 PE

RELATED PROJECTS
NH 1-5(9)308 F
RS 409-1(2)0
S 94(1)
F 62(4)



STA. 331+50.70 END CONNECTION TO PTW

STA. 329+00.70 END STPS 409-1(8)0 =  
STA. 318+74.59 ON RS 409-1(4)3

STA. 10+26.47 BEG. STPS 409-1(8)0 =  
STA. 0+26.47 ON S-94(1)

CONSTRUCTION LIMITS	MAP REVISED
CUT SECTION	
TRANSITION	
TOE OF FILL	
BACKSLOPE LIMITS	
INCLUDE ROUNDING	
	FHWA/MDT APPROVAL
	5-26-15

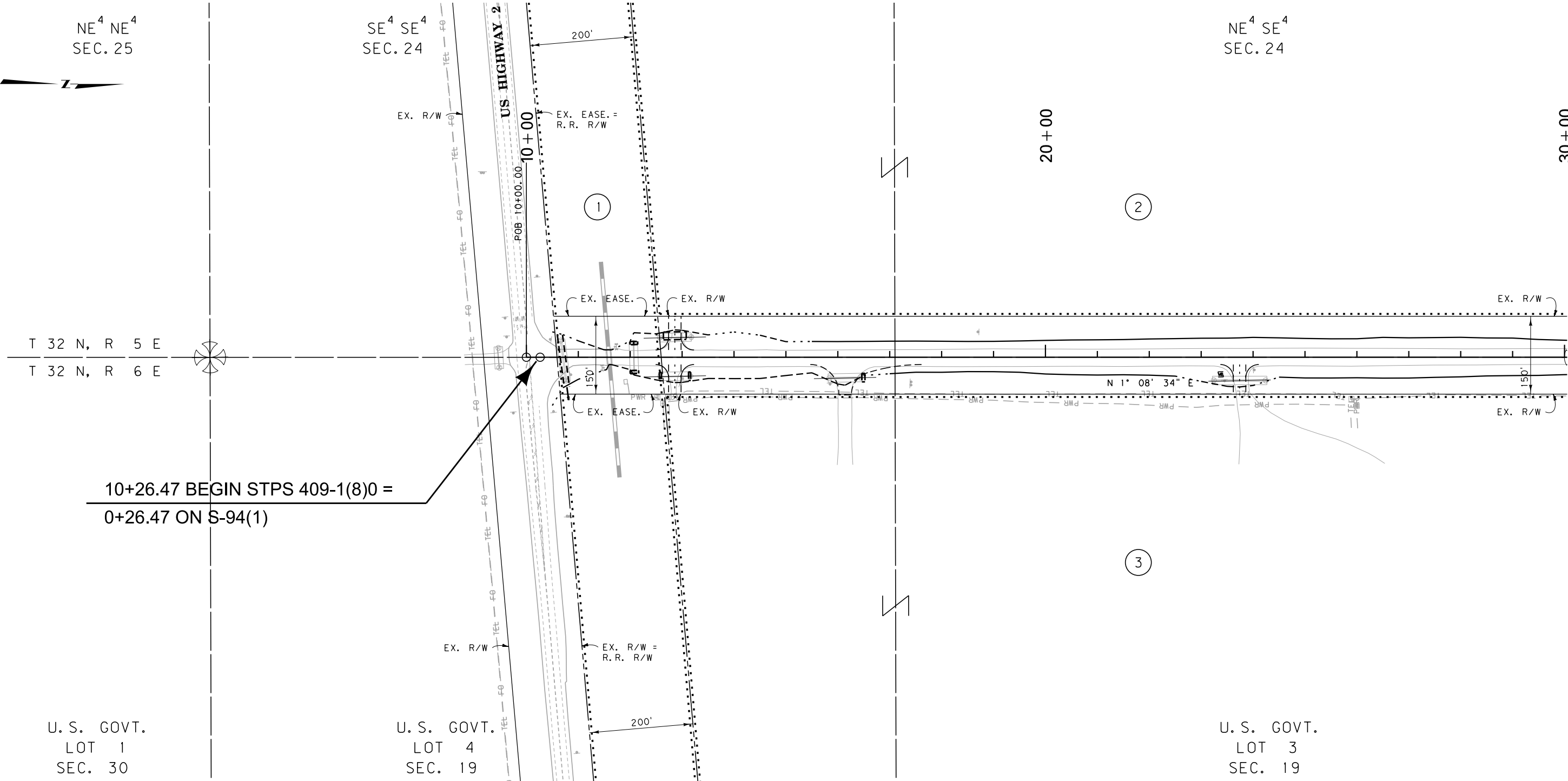
GRID STATE PLANE COORDINATES  
THIS IS A STATE PLANE COORDINATE PROJECT. ALL DIMENSIONS, DISTANCES AND AREAS ON THIS PROJECT ARE GRID, EXCEPT FOR THE EXISTING R/W WIDTH DIMENSION, WHICH IS RECORD. THE COMBINATION SCALE FACTOR IS 0.99959639 FROM RP 0.0 TO 4.2 AND 0.99962736 FROM RP 4.2 TO 6.0.



STATE	RIGHT OF WAY	SHEET	TOTAL
MONTANA		NO.	SHEETS
		3	13
R/W ID.	STPS 409-1(10)0		
PROJECT NO.	6164-010-000		

JCT US 2 - NORTH OF CHESTER

SEE SHEET NO. 2 FOR OWNERSHIP NAMES, ADDRESSES, AREAS, ETC.



CONSTRUCTION LIMITS	MAP REVISED
CUT SECTION	
TRANSITION	
TOE OF FILL	
BACKSLOPE LIMITS INCLUDE ROUNDING	
	FHWA/MDT APPROVAL 5-26-15
3	c:\dgn\6164000\rop\h001.dgn
2	7/5/2016
1	10:30:37 AM CPS-U1068

**MDT** MONTANA DEPARTMENT OF TRANSPORTATION

- NOTES:
1. THE PROPOSED R/W LINE WHERE A SPIRAL CURVE TRANSITION IS USED IS A CHORD RATHER THAN A CONCENTRIC CURVE.
  2. ALL STATIONS AND OFFSETS FOR R/W BREAKS ARE IN REFERENCE TO THE R/W BASELINE.

GRID STATE PLANE COORDINATES

THIS IS A STATE PLANE COORDINATE PROJECT. ALL DIMENSIONS, DISTANCES AND AREAS ON THIS PROJECT ARE GRID, EXCEPT FOR THE EXISTING R/W WIDTH DIMENSION, WHICH IS RECORD. THE COMBINATION SCALE FACTOR IS 0.99959639 FROM RP 0.0 TO 4.2 AND 0.99962736 FROM RP 4.2 TO 6.0.

MONTANA DEPARTMENT OF TRANSPORTATION

**RIGHT OF WAY PLAN**

LIBERTY COUNTY

SCALE 1"=100'

0 50' 100' 200' 300'

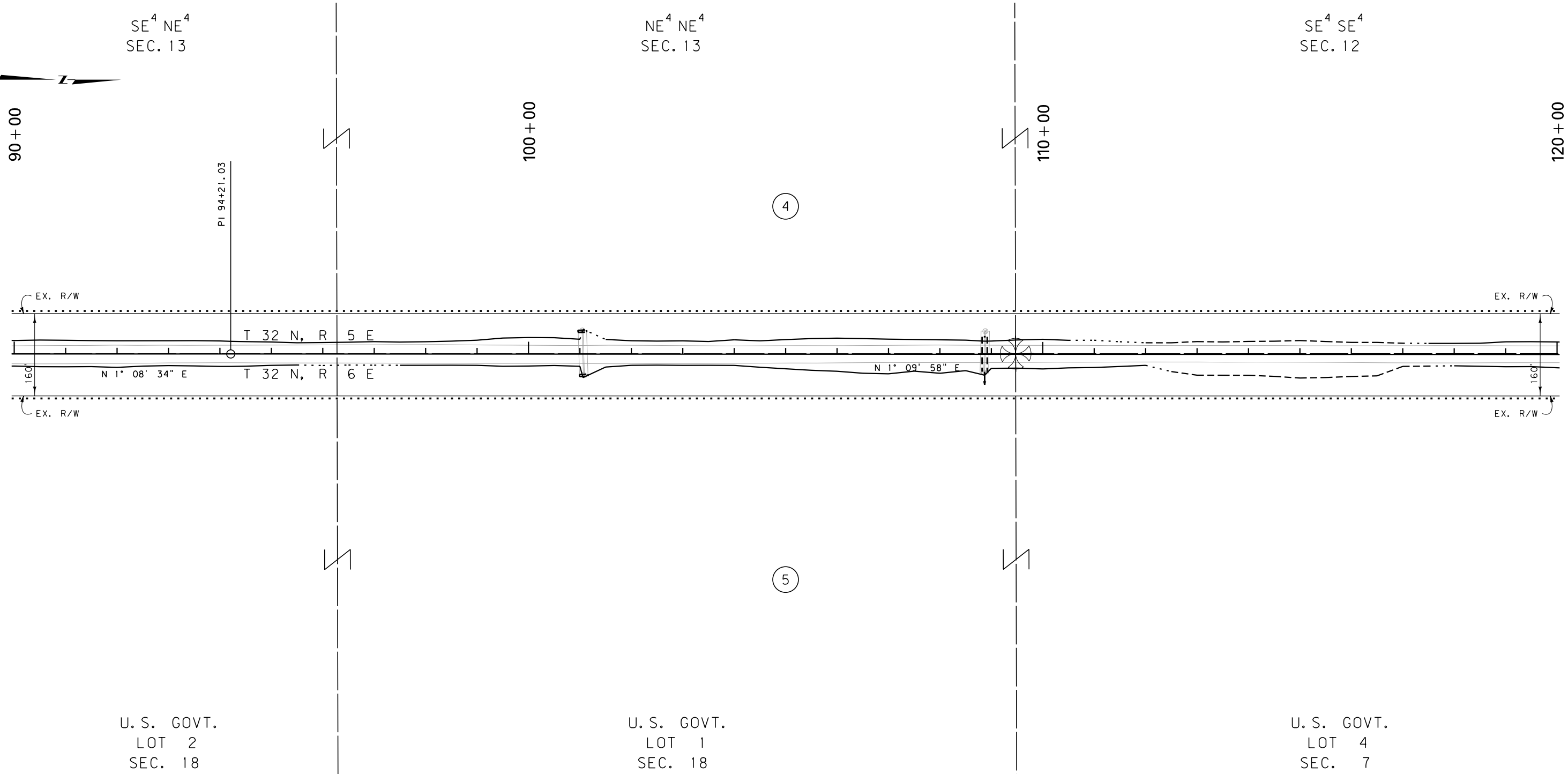




STATE	RIGHT OF WAY	SHEET	TOTAL
MONTANA		NO.	SHEETS
		6	13
R/W ID.		STPS 409-1 (10)0	
PROJECT NO.		6164-010-000	

JCT US 2 - NORTH OF CHESTER

SEE SHEET NO. 2 FOR OWNERSHIP NAMES, ADDRESSES, AREAS, ETC.



GRID STATE PLANE COORDINATES

THIS IS A STATE PLANE COORDINATE PROJECT. ALL DIMENSIONS, DISTANCES AND AREAS ON THIS PROJECT ARE GRID, EXCEPT FOR THE EXISTING R/W WIDTH DIMENSION, WHICH IS RECORD. THE COMBINATION SCALE FACTOR IS 0.99959639 FROM RP 0.0 TO 4.2 AND 0.99962736 FROM RP 4.2 TO 6.0.

- NOTES:
1. THE PROPOSED R/W LINE WHERE A SPIRAL CURVE TRANSITION IS USED IS A CHORD RATHER THAN A CONCENTRIC CURVE.
  2. ALL STATIONS AND OFFSETS FOR R/W BREAKS ARE IN REFERENCE TO THE R/W BASELINE.

CONSTRUCTION LIMITS		MAP REVISED	
CUT SECTION	TOP OF CUT		
TRANSITION			
TOE OF FILL			
BACKSLOPE LIMITS INCLUDE ROUNDING		FHWA/MDT APPROVAL	
		5-26-15	
3	MDT★ MONTANA DEPARTMENT OF TRANSPORTATION	c:\dgn\6164000\rop\h002.dgn	
2		7/5/2016	
1		10:30:53 AM CPS - U1068	

MONTANA DEPARTMENT OF TRANSPORTATION	
RIGHT OF WAY PLAN	
LIBERTY COUNTY	
SCALE 1"=100'	
0 50' 100' 200' 300'	



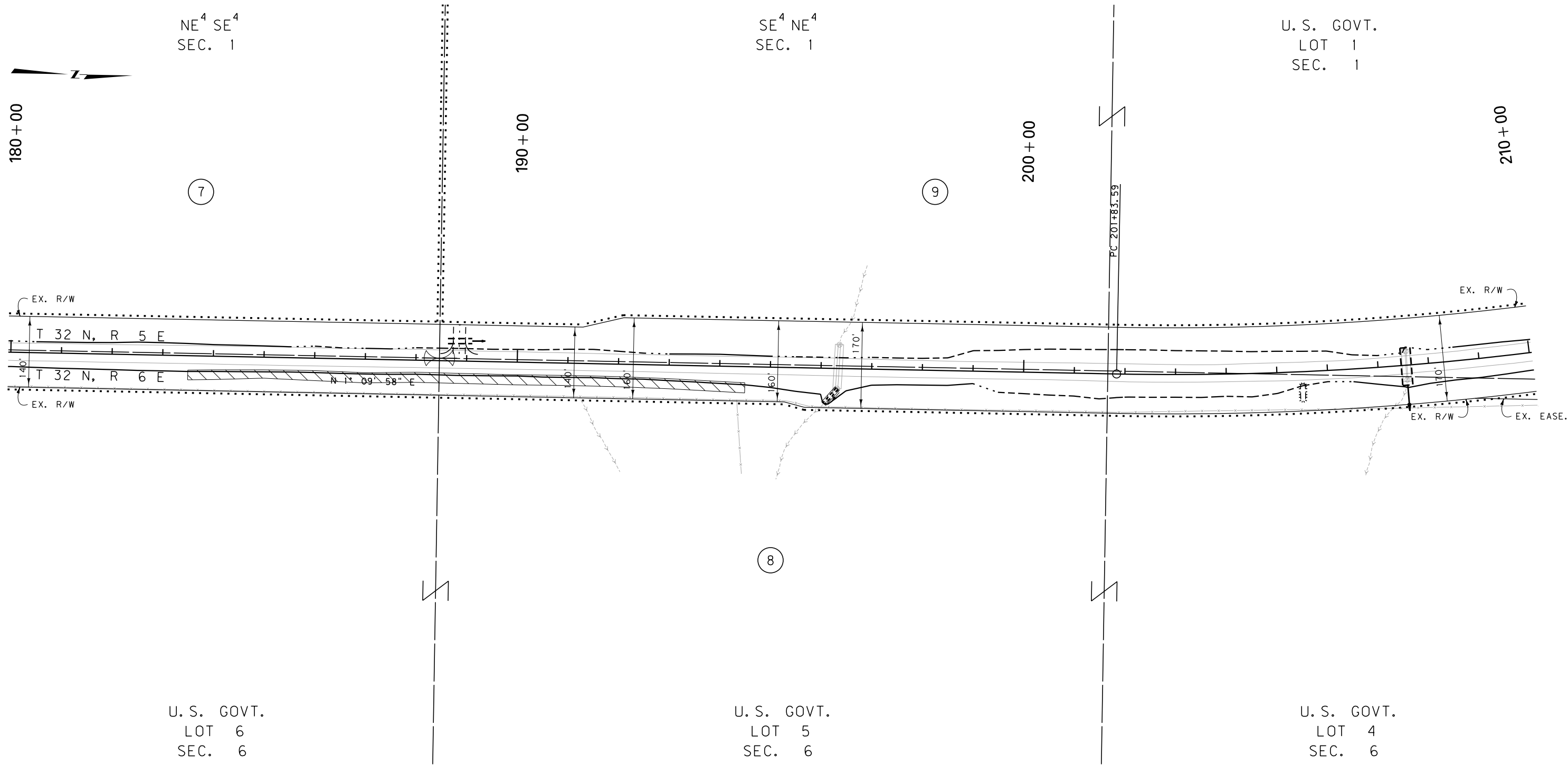




STATE	RIGHT OF WAY	SHEET	TOTAL
MONTANA		NO.	SHEETS
		9	13
R/W ID.		STPS 409-1 (10)10	
PROJECT NO.		6164-010-000	

JCT US 2 - NORTH OF CHESTER

SEE SHEET NO. 2 FOR OWNERSHIP NAMES, ADDRESSES, AREAS, ETC.



GRID STATE PLANE COORDINATES

THIS IS A STATE PLANE COORDINATE PROJECT. ALL DIMENSIONS, DISTANCES AND AREAS ON THIS PROJECT ARE GRID, EXCEPT FOR THE EXISTING R/W WIDTH DIMENSION, WHICH IS RECORD. THE COMBINATION SCALE FACTOR IS 0.99959639 FROM RP 0.0 TO 4.2 AND 0.99962736 FROM RP 4.2 TO 6.0.

- NOTES:
1. THE PROPOSED R/W LINE WHERE A SPIRAL CURVE TRANSITION IS USED IS A CHORD RATHER THAN A CONCENTRIC CURVE.
  2. ALL STATIONS AND OFFSETS FOR R/W BREAKS ARE IN REFERENCE TO THE R/W BASELINE.

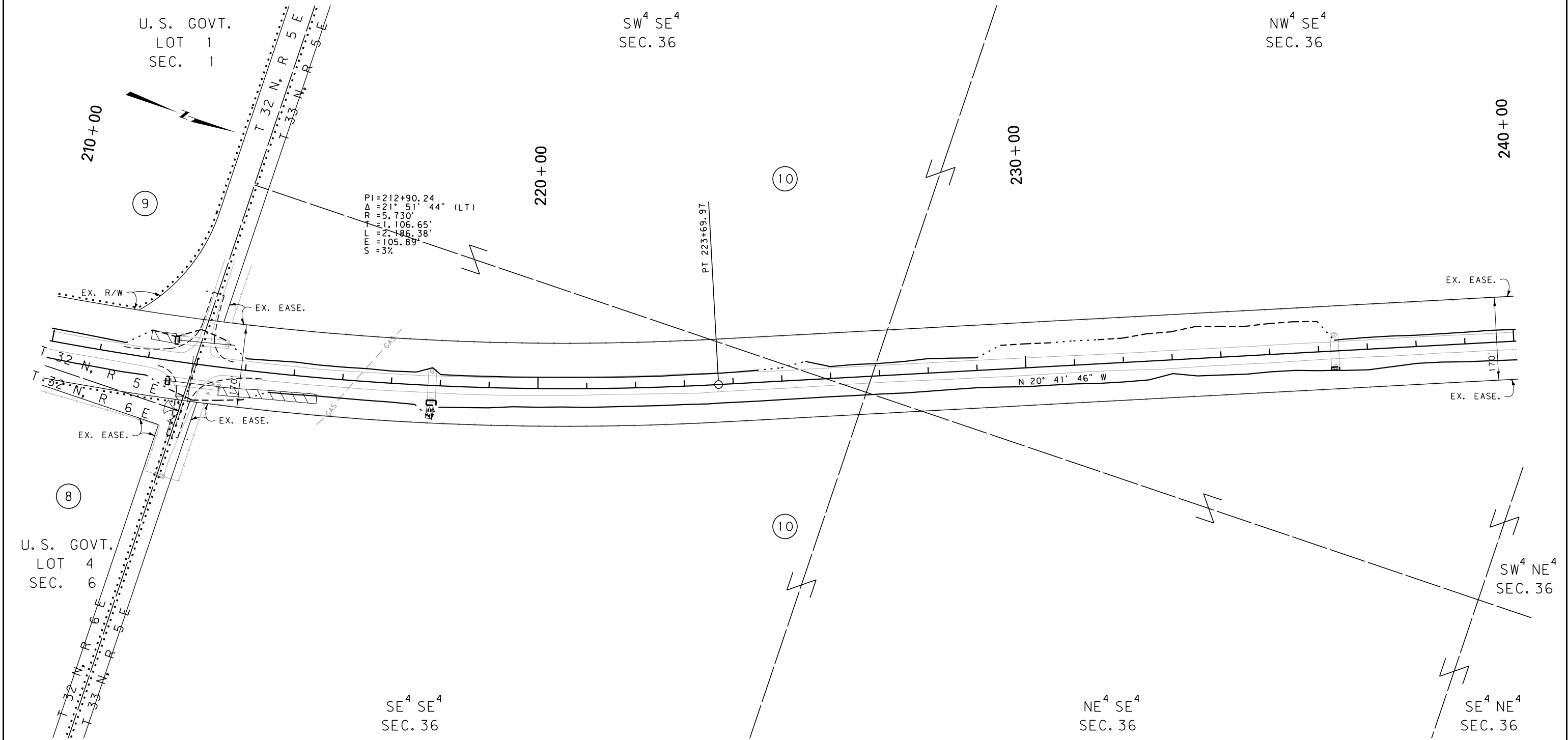
CONSTRUCTION LIMITS	MAP REVISED
CUT SECTION	
TRANSITION	
TOE OF FILL	
BACKSLOPE LIMITS INCLUDE ROUNDING	
	FHWA/MDT APPROVAL
	5-26-15
3	c:\dgn\6164000\rop\h003.dgn
2	7/5/2016
1	10:31:09 AM CPS-U1068

MONTANA DEPARTMENT OF TRANSPORTATION
RIGHT OF WAY PLAN
LIBERTY COUNTY
SCALE 1"=100'
0 50' 100' 200' 300'

STATE	RIGHT OF WAY	SHEET	TOTAL
MONTANA		NO.	SHEETS
		10	13
R/W ID.		STPS 409-1(10)0	
PROJECT NO.		6164-010-000	

JCT US 2 - NORTH OF CHESTER

SEE SHEET NO. 2 FOR OWNERSHIP NAMES, ADDRESSES, AREAS, ETC.



CONSTRUCTION LIMITS	MAP REVISED
CUT SECTION TOP OF CUT	
TRANSITION	
TOE OF FILL	
BACKSLOPE LIMITS INCLUDE ROUNDING	
	FHWA/MDT APPROVAL 5-26-15
3	MDTA MONTANA DEPARTMENT OF TRANSPORTATION
2	c:\dgn\6164000\ropln003.dgn
1	7/5/2016 10:31:12 AM CPS-U1068

- NOTES:
1. THE PROPOSED R/W LINE WHERE A SPIRAL CURVE TRANSITION IS USED IS A CHORD RATHER THAN A CONCENTRIC CURVE.
  2. ALL STATIONS AND OFFSETS FOR R/W BREAKS ARE IN REFERENCE TO THE R/W BASELINE.

GRID STATE PLANE COORDINATES

THIS IS A STATE PLANE COORDINATE PROJECT. ALL DIMENSIONS, DISTANCES AND AREAS ON THIS PROJECT ARE GRID, EXCEPT FOR THE EXISTING R/W WIDTH DIMENSION, WHICH IS RECORD. THE COMBINATION SCALE FACTOR IS 0.99959639 FROM RP 0.0 TO 4.2 AND 0.99962736 FROM RP 4.2 TO 6.0.

MONTANA DEPARTMENT OF TRANSPORTATION

RIGHT OF WAY PLAN

LIBERTY COUNTY

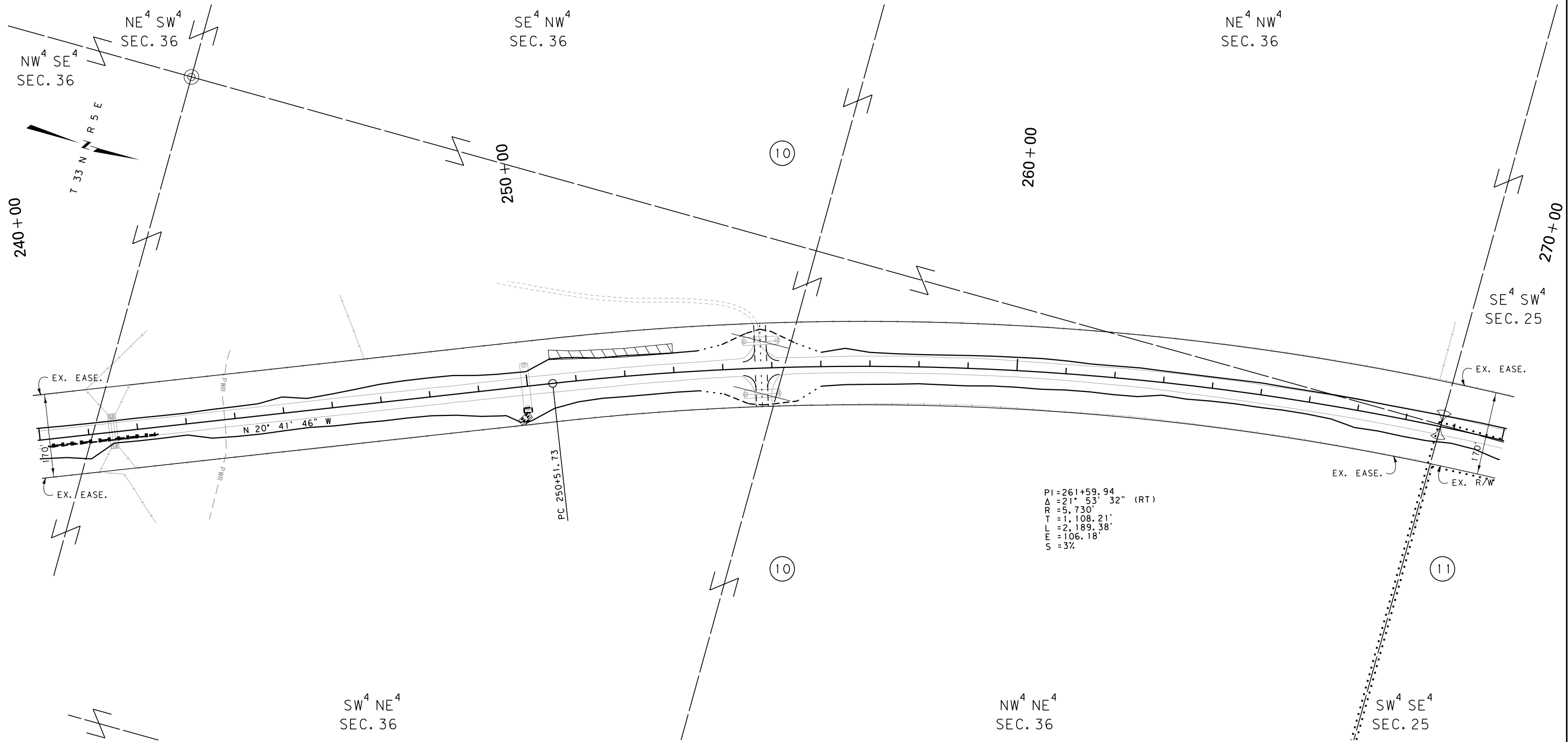
SCALE 1"=100'

0 50' 100' 200' 300'

STATE	RIGHT OF WAY	SHEET	TOTAL
		NO.	SHEETS
MONTANA		11	13
R/W ID.		STPS 409-1 (10)10	
PROJECT NO.		6164-010-000	

JCT US 2 - NORTH OF CHESTER

SEE SHEET NO. 2 FOR OWNERSHIP NAMES, ADDRESSES, AREAS, ETC.



CONSTRUCTION LIMITS

CUT SECTION

TRANSITION

TOE OF FILL

BACKSLOPE LIMITS

INCLUDE ROUNDING

MAP REVISED

FHWA/MDT APPROVAL

5-26-15

3

2

1

MDT

MONTANA DEPARTMENT OF TRANSPORTATION

c:\dgn\6164000\rop\h003.dgn

7/5/2016

10:31:15 AM

CPS - U1068

- NOTES:
1. THE PROPOSED R/W LINE WHERE A SPIRAL CURVE TRANSITION IS USED IS A CHORD RATHER THAN A CONCENTRIC CURVE.
  2. ALL STATIONS AND OFFSETS FOR R/W BREAKS ARE IN REFERENCE TO THE R/W BASELINE.

GRID STATE PLANE COORDINATES

THIS IS A STATE PLANE COORDINATE PROJECT. ALL DIMENSIONS, DISTANCES AND AREAS ON THIS PROJECT ARE GRID, EXCEPT FOR THE EXISTING R/W WIDTH DIMENSION, WHICH IS RECORD. THE COMBINATION SCALE FACTOR IS 0.99959639 FROM RP 0.0 TO 4.2 AND 0.99962736 FROM RP 4.2 TO 6.0.

MONTANA DEPARTMENT OF TRANSPORTATION

RIGHT OF WAY PLAN

LIBERTY COUNTY

SCALE 1"=100'

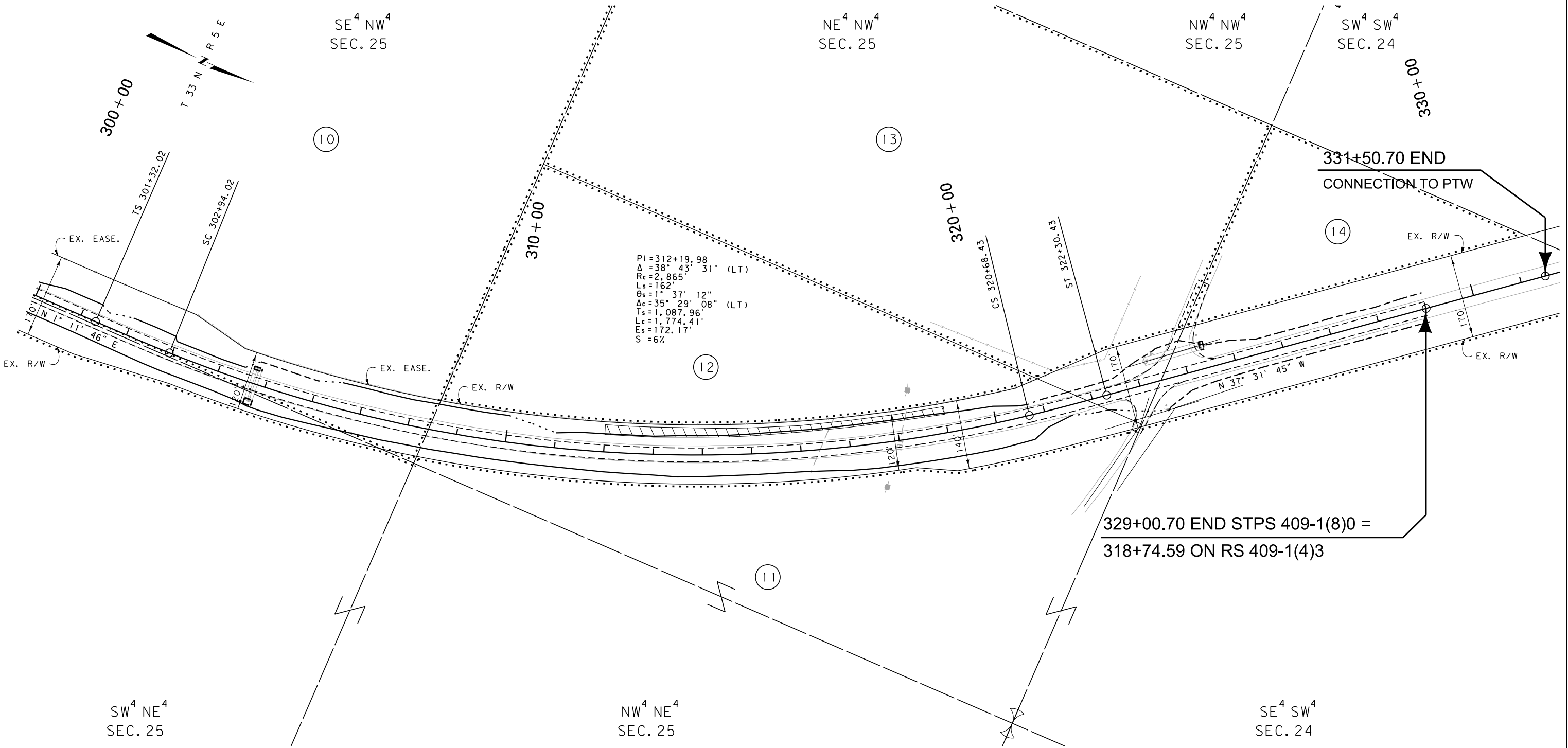
0 50' 100' 200' 300'



STATE	RIGHT OF WAY	SHEET	TOTAL
		NO.	SHEETS
MONTANA		13	13
R/W ID.		STPS 409-1(10)0	
PROJECT NO.		6164-010-000	

JCT US 2 - NORTH OF CHESTER

SEE SHEET NO. 2 FOR OWNERSHIP NAMES, ADDRESSES, AREAS, ETC.



CONSTRUCTION LIMITS		MAP REVISED	
CUT SECTION	TOP OF CUT		
TRANSITION			
TOE OF FILL			
BACKSLOPE LIMITS INCLUDE ROUNDING		FHWA/MDT APPROVAL	
		5-26-15	
3	MDTA	MONTANA DEPARTMENT OF TRANSPORTATION	c:\dgn\6164000\rop\h004.dgn
2			7/5/2016
1			10:31:28 AM CPS - U1068

- NOTES:
1. THE PROPOSED R/W LINE WHERE A SPIRAL CURVE TRANSITION IS USED IS A CHORD RATHER THAN A CONCENTRIC CURVE.
  2. ALL STATIONS AND OFFSETS FOR R/W BREAKS ARE IN REFERENCE TO THE R/W BASELINE.

GRID STATE PLANE COORDINATES

THIS IS A STATE PLANE COORDINATE PROJECT. ALL DIMENSIONS, DISTANCES AND AREAS ON THIS PROJECT ARE GRID, EXCEPT FOR THE EXISTING R/W WIDTH DIMENSION, WHICH IS RECORD. THE COMBINATION SCALE FACTOR IS 0.99959639 FROM RP 0.0 TO 4.2 AND 0.99962736 FROM RP 4.2 TO 6.0.

MONTANA DEPARTMENT OF TRANSPORTATION

**RIGHT OF WAY PLAN**

LIBERTY COUNTY

SCALE 1"=100'

0 50' 100' 200' 300'