

PLANS

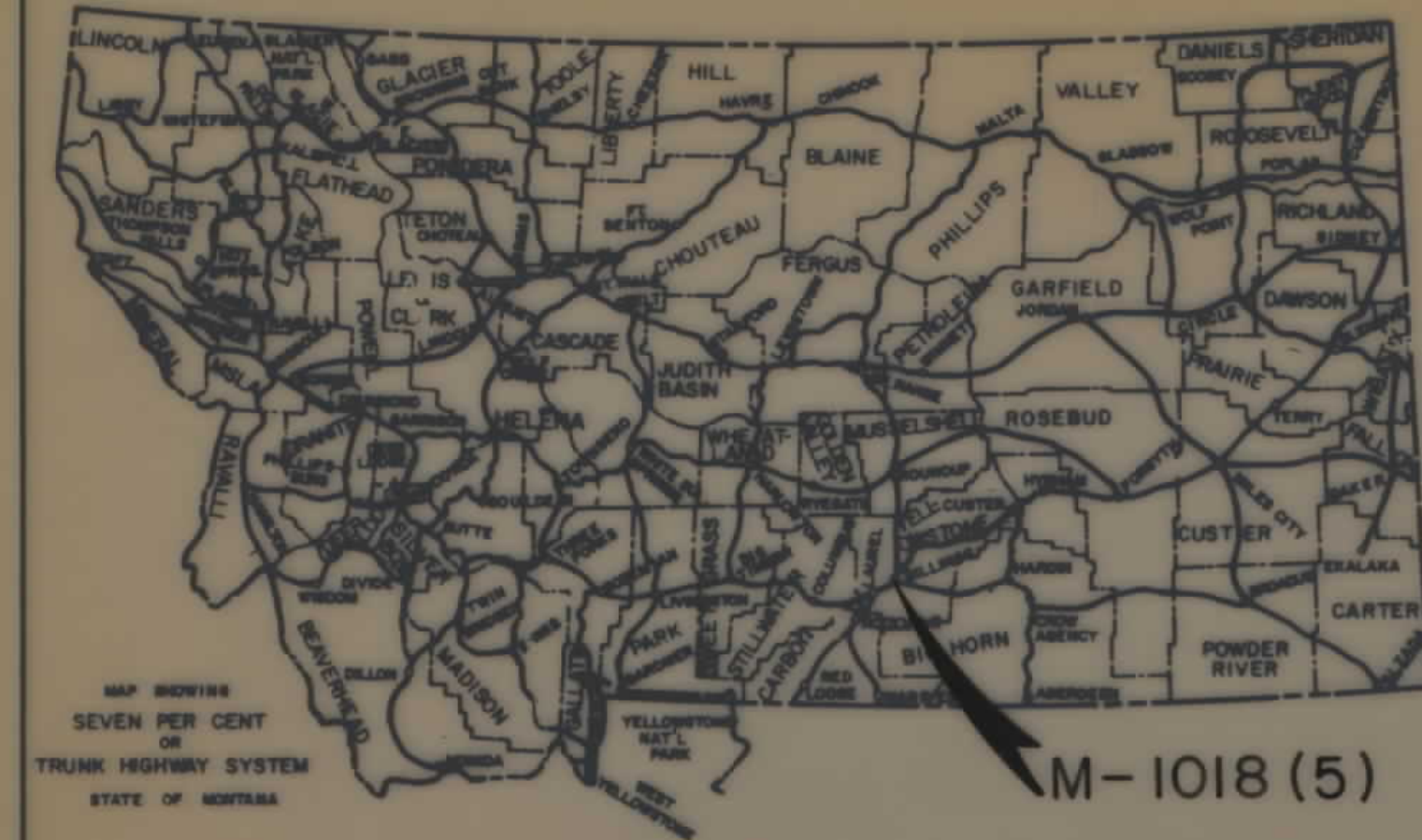
NOT

TO

SCALE

STATE	PROJECT NUMBER	SHEET NO.	TOTAL SHEETS
MONT.	M-1018 (5)	1	7

4TH&6TH AVE. COUPLET
BILLINGS
18 TH. ST. TO 27 TH. ST.



STATE OF MONTANA
DEPARTMENT OF HIGHWAYS
RIGHT OF WAY PLAN OF
FEDERAL AID PROJECT NO. M-1018 (5) R/W
4TH&6TH AVE. COUPLET
BILLINGS
MILES .459-6TH
.649-4TH

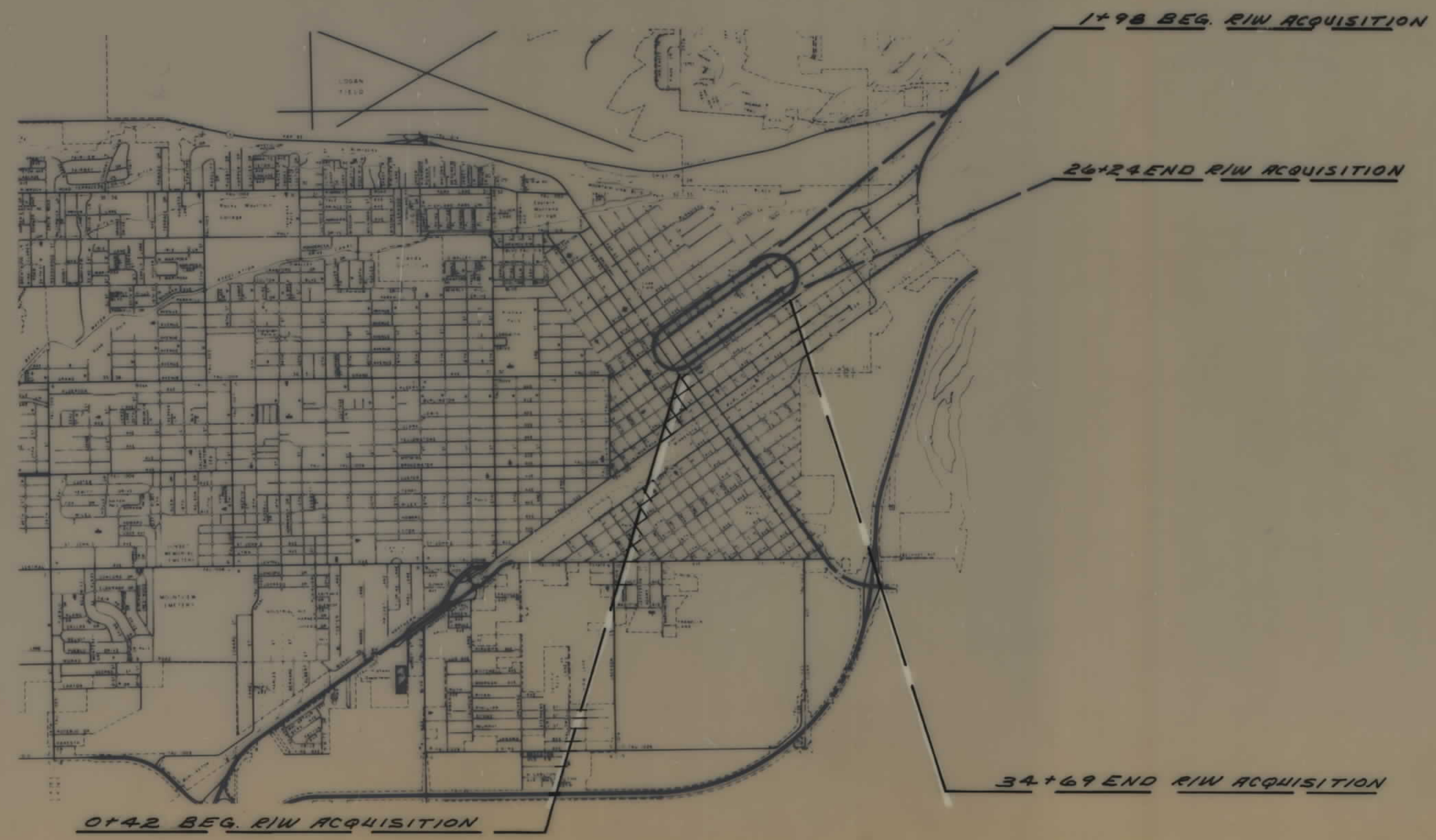
INDEX		
PARCEL NO.	OWNERSHIPS	SHEET NO.
1.	SUPER AMERICA STATIONS INC.	2
2.	U.S. STEEL % BUTTNEY FOODS	2
3.	W.L. COX % R.G. De MARIS	2
4.	T.E. TOWE % C.E. BALL	2
5.	C.M. KENNEY % R. ENLI TRUSTEE	2
6.	W.K. & L.M. SCHULTZ	2
7.	H.E. LILLIS	2
8.	JEANNE CHAPPELL	2
9.	DONALD C. BOESPFLUG	2
10.	H. & C. LUSE % G. & M. SHECKLETON	2
11.	DELETED	2
12.	WILLIAM K. SCHULTA	3
13.	J. & B. BLAKE % MARRIC PROPERTIES	3
14.	W. & B. WALKER % R. & E. CAMPBELL	3
15.	V. BOUKAS % G. DONOVAN	3
16.	G. & D. WETSTEIN	3
17.	L. B. & E. D. SMITH % E. E. W. McDERMOTT	3
18.	F. H. WENTWORTH % W. & M. PEMBERTON	3
19.	PETER & ZELLAH YEGEN	3
20.	R.W. & D.L. ANSTETT % D. A. CLARK	3
21.	CAPITOL LAND & BUILDING CO.	3
22.	ALBERT & RUTH CLARK	3
23.	RUSSELL C. CLARK % PARKER MONT.	3
24.	R.C. CLARK % D.A. REGER ETAL.	3
25.	M. DEMOTT ENTERPRISES INC.	3
26.	R.C. CLARK % D.A. REGER ETAL.	3
27.	E.F. BOSCHERT % D.A. REGER ETAL.	3
28.	EMMA M. LANGSTAFF, ETAL.	3
29.	H.E. LILLIS % E.E. & C.J. BRADSHAW FARLEY	3, 4
30.	E. & R. NIBBEN % D.D. BRAUN	4
31.	DELETED	4
32.	INDUSTRIAL CORP % D.J. & V.A. DOERSCHLAG	4
33.	DELETED	4
34.	INDUSTRIAL CORP % D.J. & V.A. DOERSCHLAG	4
35.	G. H. TANNER & DEAN A. SWANSON	5
36.	BILLINGS U.S. FEDERAL CREDIT UNION	5
37.	W.E. & B.B. WALKER % NEWTON EXP. ORATION	5
38.	ROBERT F. & GLADYS E. STONE	5
39.	M.W. WESTBARD % E.L. THOMAS % K.R.H.	5
40.	PETE SCHONIRANS	6
41.	JAMES BUSSELL	6
42.	QUALITY CONCRETE CO.	6
43.	FRANK & FRANSENA G. THOMAS	6
44.	ALDRICH & COMPANY	6, 7
45.	DELETED	6
46.	MONTANA/DAKOTA UTILITIES	7

CONVENTIONAL SIGNS

- RIGHT OF WAY LINE
- CENTERLINE (C) OR PROJECTED LINE
- STK'D. CENTERLINE
- PARCEL NUMBER
- OWNERSHIP BOUNDARY
- R/W USE EXISTING R/W LT OR RT
- PRESENT TRAVELED WAY (RTW)
- R/W LINE FENCED
- RAILROAD R/W
- CONSTRUCTION LIMITS CUT FILL
- FENCE LINE
- CONTROL OF ACCESS WITH FENCE
- CONTROL OF ACCESS WITHOUT FENCE
- GATE IN FENCE
- CATTLE GUARD=24'
- STATE & NATIONAL BORDER LINES
- CITY OR TOWN LIMITS LINE
- COUNTY LINE
- RESERVATION LINE
- TOWNSHIP & SECTION LINE
- 1/2 SECTION LINE
- 1/4 SECTION LINE
- SECTION CORNER
- 1/4 SECTION COR.
- 1/8 SECTION COR.
- CENTER OF SECTION
- TELEPHONE OR TELEGRAPH POLES IN PLACE
- POWER POLES IN PLACE
- TEL OR TEL OR POWER POLES TO BE MOVED
- NEW PIPES
- OLD PIPES IN PLACE
- OUTLET DITCH
- INLET DITCH
- DITCHES
- CHANNEL CHANGES
- BRIDGE
- RAILROADS

RELATED PROJECTS

ASSOCIATED PROJECT AGREEMENT NUMBERS



STATE OF MONTANA
DEPARTMENT OF HIGHWAYS

APPROVED
AUG. 16 19 **79**

DIRECTOR OF HIGHWAYS
BY *[Signature]*
ADMINISTRATOR
ENGINEERING DIVISION

U.S. DEPARTMENT OF TRANSPORTATION
FEDERAL HIGHWAY ADMINISTRATION

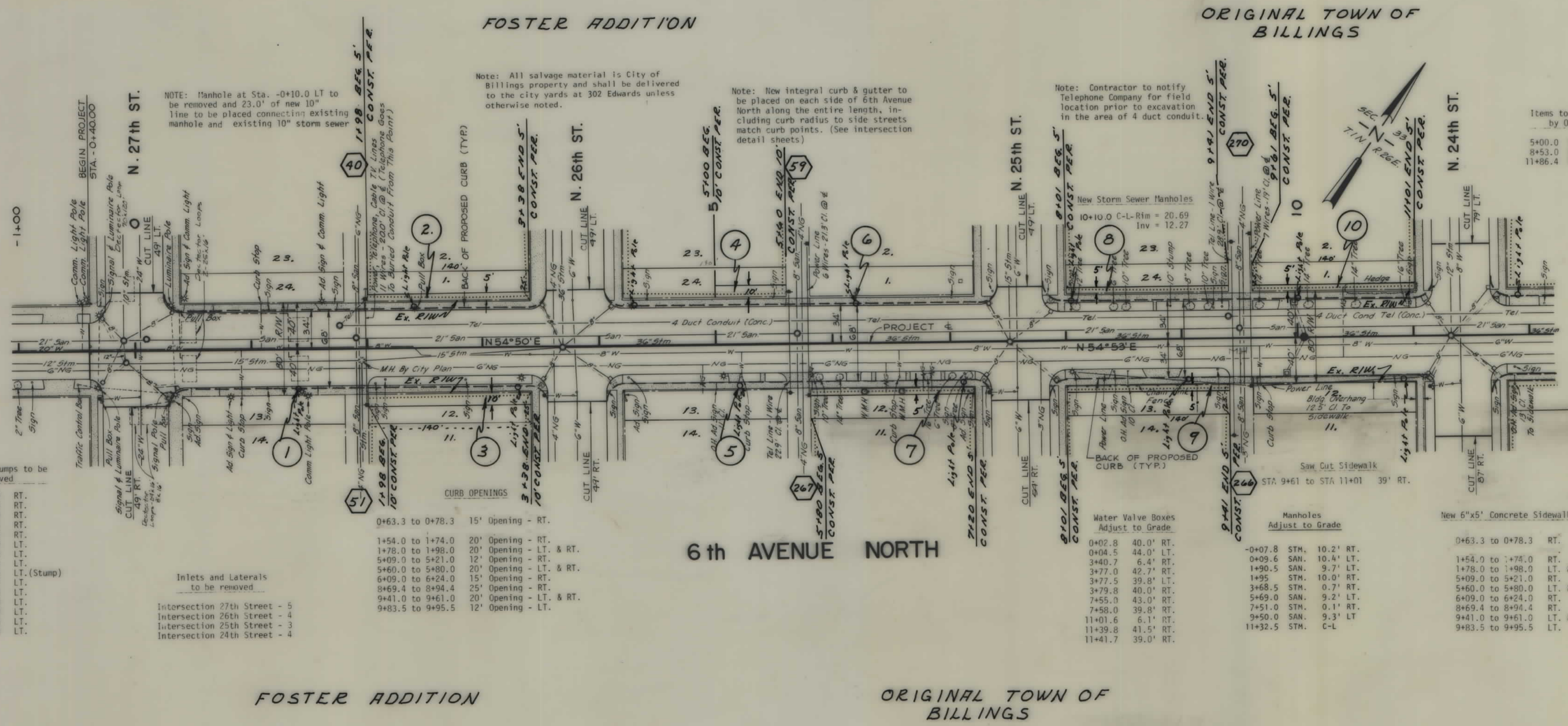
10-4-81
Revised: 3-19-80, 4-17-80, 12-8-81, 7-20-82

APPROVED
DIVISION ENGINEER
DATE

JACK R. BECKERT
205 ES
REGISTERED ENGINEER & LAND SURVEYOR

OWNERSHIPS										
PARCEL	NAME	ADDRESS	TOTAL AREA	GROSS R/W AREA	P.T.W. AREA	AREA TO BE ACQUIRED	REMAINDER LEFT	REMAINDER RIGHT	CONST. PERM. AREA	EASEMENT AREA
#1.	SUPER AMERICA STATIONS INC. % TAX DEPT. RD. BOX 391, HIGHLAND KENTUCKY									
2.	UNITED STATE STEEL & CARNEGIE PENSION FUND % BUTTREY FOODS-LYLE GORMAN	RD. BOX 5008, 67 FALLS, MONT. 59903							700 ^{sq}	
3.	W.L. COX % R.G. DOHREIS	230 W. MAIN, MISSOULA, MONT.							1400 ^{sq}	
#4.	T.E. TOWE & C.E. BALL	2822 1st. AVE. NO. BILLINGS, MONT.							600 ^{sq}	
#5.	C.M. KENNEY % R. ENLI TRUSTEE	123 NO. CRESTWOOD DR. BILLINGS								
#6.	W.K. & L.M. SCHULTZ	2224 FOX DR., BILLINGS MONT.							700 ^{sq}	
7.	H.E. LILLIS	BOX 1422 BILLINGS, MONT.							700 ^{sq}	
8.	JERANNE CHARPELL	35 BROADWATER AVE., BILLINGS							700 ^{sq}	
9.	DONALD C. BOESPFLUG	2424 - 6th Ave No. BILLINGS, MONT.							700 ^{sq}	
10.	H. & C. L. USE % G. & M. SHECKLETON	114 YELLOWSTONE AVE. BILLINGS							700 ^{sq}	
11.	DELETED									

* AGREEMENT TO ENTER ON PROPERTY TO FORM LIGHT FOUNDATIONS.



Note: All salvage material is City of Billings property and shall be delivered to the city yards at 302 Edwards unless otherwise noted.

Note: New integral curb & gutter to be placed on each side of 6th Avenue North along the entire length, including curb radius to side streets match curb points. (See intersection detail sheets)

Note: Contractor to notify Telephone Company for field location prior to excavation in the area of 4 duct conduit.

Items to be Removed by Others

5400.0	RT. - AD Sign
8453.0	RT. - AD Sign
11486.4	RT. - AD Sign

New 4"x5' Concrete Sidewalk

0+40.2 to 0+60.3	LT.
0+43.3 to 0+63.3	RT.
0+78.3 to 1+54.0	RT.
0+80.3 to 1+25.0	LT.
1+50.0 to 1+78.0	LT.
1+74.0 to 1+78.0	RT.
1+98.0 to 3+39.3	LT. & RT.
4+20.8 to 5+60.0	LT.
4+20.8 to 5+09.0	RT.
5+21.0 to 5+60.0	RT.
5+80.0 to 6+09.0	RT.
5+80.0 to 7+25.7	LT.
6+25.0 to 7+19.7	RT.
7+96.0 to 9+41.0	LT.
8+00.3 to 8+69.4	RT.
9+94.4 to 9+41.0	RT.
9+61.0 to 11+01.0	RT.
9+61.0 to 9+83.5	LT.
9+95.5 to 11+01.0	LT.
11+82.0 to 12+60.0	LT.
11+82.0 to 13+21.5	RT.
0+60.3 to 0+80.3	LT.
1+25.0 to 1+50.0	LT.

NEW STORM INLETS

STATION	LT.	RT.	INV
-0+28.7	28.5'		19.11
-0+31.0		30.5'	19.17
0+26.0	42.0'		19.02
0+28.7		42.0'	19.27
0+36.8		33.0'	18.27
3+50.3	37.3'		18.25
3+50.3		37.3'	18.11
4+09.8		37.3'	18.29
4+09.8		37.3'	17.91
7+30.7		37.3'	16.99
7+36.7	37.3'		17.08
7+85.0		37.3'	16.89
7+89.3		37.3'	16.89
9+88.5		33.5'	16.82
9+96.0	33.5'		16.82
11+12.0		37.3'	16.07
11+12.0	37.3'		16.32
11+71.0		37.3'	16.12
11+71.0	37.3'		16.26

Note: All lateral lines for inlets will be 10" Dia. P.V.C. laid on a min. slope of 1.0%

See Sheet 13 for Inlet Details

HORIZ. SCALE: 1" = 50'
VERT. SCALE: 1" = 5'

<p>BACKSLOPE LIMITS INCLUDE ROUNDING CONSTRUCTION LIMITS TOP OF CUT TOE OF FILL</p>	<p>STATE OF MONTANA DEPARTMENT OF HIGHWAYS LAND REQUIRED FOR RIGHT OF WAY YELLOWSTONE COUNTY</p>
<p>MAP TRANS. TO R/W MAP REVISED 3-19-80, 7-22-80</p>	<p>SCALE 1" = 50' MAP COMPLETED</p>
<p>B.P.R. APPROVAL AUTH. FOR ACQ. 12-13-79</p>	

428 Ave No 1 CHAN Bldg

OWNERSHIPS

PARCEL	NAME	ADDRESS	TOTAL AREA	GROSS R/W AREA	P.T.W. AREA	AREA TO BE ACQUIRED	REMAINDER LEFT	REMAINDER RIGHT	CONST PERM AREA	EASEMENT AREA
12.	WILLIAM K. SCHULTZ	2224 FOX DR., BILLINGS MONT.							357.5'	
13.	J. & B. BLACK % MARIC PROPERTIES	114 YELLOWSTONE AVE BILLINGS							475.0'	
14.	W. & B. WALKER % R. E. CAMPBELL	98 SHADOW HEIGHTS, BILLINGS							702.5'	
15.	V. BOUKAS % G. DONOVAN	2500 PATRICIA LAKE, BILLINGS							702.5'	
16.	G. & D. WETSTEIN	819 No. 23rd St. BILLINGS							206'	
*17.	L. B. & E. D. SMITH % E. E. W. McDERMOTT	2222 6th Ave No. BILLINGS							700'	
18.	F. H. WENTWORTH % W. E. M. PEMBERTON ETAL	811 No. 29th St. BILLINGS							75'	18'
19.	PETER & ZELLAH YEGEN	801. 959 BILLINGS, MONT.							85'	
*20.	A. W. & DOLORES L. ANSTETT % D. ALBERT C. & RUTH H. CLARK	BILLINGS							250'	
21.	CAPITAL LAND BUILDING CO.	P.O. BOX 95 BILLING, MONT.							250'	
22.	ALBERT & RUTH CLARK	3134 BEN NOGAN LAKE, BILLINGS							250'	
23.	RUSSELL C. CLARK % PARKER MONT. R.O. BOX 1798,	BILLINGS							165'	
*24.	R. C. CLARK % D. A. REGER ETAL	2408 SUNNYVIEW LAKE, BILLINGS							250'	
*25.	MC DERMOTT ENTERPRISES INC.	2610 McCORMICK LAKE, BILLINGS							250'	
26.	R. C. CLARK % D. A. REGER ETAL	2408 SUNNYVIEW LAKE, BILLINGS							250'	
27.	E. F. BOSCHERT % D. A. REGER ETAL	"							250'	
28.	EMR M. LANGSTAFF ETAL	2016 6th Ave. No. BILLINGS							750'	
29.	H. E. ILLIS % E. E. & C. J. & R. P. & ZENE FRALEY	3130 Ave. F, BILLINGS MONT								

ORIGINAL TOWN OF BILLINGS

*"AGREEMENT TO ENTER ON PROPERTY TO FORM LIGHT FOUNDATIONS"

New 6"x5' Concrete Sidewalk

12+05 to 12+30	LT.
12+60.0 to 12+85.0	LT.
13+21.5 to 13+41.5	LT. & RT.
16+38.5 to 16+20.5	RT.
16+39.0 to 17+21.0	LT.
17+02.0 to 17+22.0	RT.
17+66.5 to 17+78.5	RT.
20+25.5 to 20+37.5	LT.
20+78.8 to 20+90.8	RT.
21+29.5 to 21+41.0	RT.
24+60.5 to 24+72.5	RT.

New 4"x5' Concrete Sidewalk

12+85.0 to 13+21.5	LT.
13+41.5 to 14+81.7	LT. & RT.
15+63.2 to 16+89.0	LT.
15+63.2 to 16+08.5	RT.
16+20.5 to 17+02.0	LT.
17+22.0 to 17+66.5	RT.
17+21.0 to 18+61.0	LT.
17+78.5 to 18+55.0	RT.
19+43.0 to 20+25.5	RT.
20+37.5 to 20+78.8	RT.
20+90.8 to 21+29.0	RT.
21+41.0 to 22+42.0	RT.
23+23.2 to 24+60.5	RT.
24+72.5 to 26+24.0	RT.

CURB OPENINGS

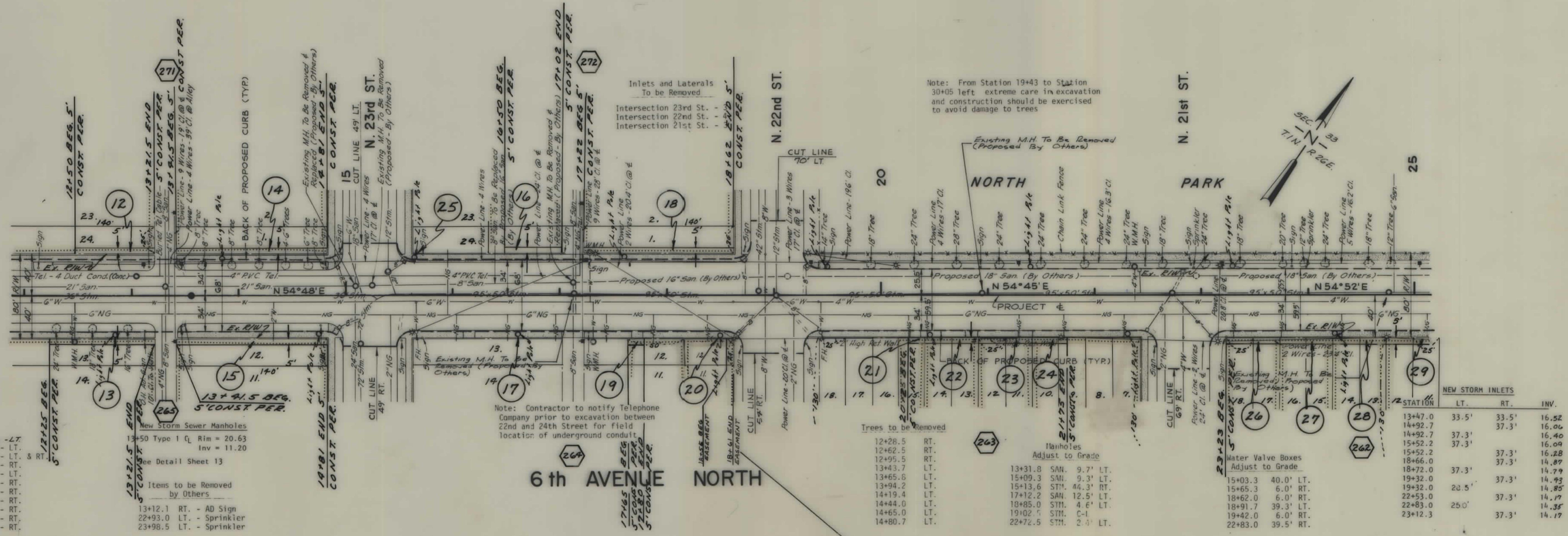
12+05 to 12+30	25' Opening - LT.
12+60.0 to 12+85.0	25' Opening - LT.
13+21.5 to 13+41.5	20' Opening - LT. & RT.
16+08.5 to 16+20.5	12' Opening - RT.
16+89.0 to 17+21.0	32' Opening - LT.
17+02.0 to 17+22.0	20' Opening - RT.
17+66.5 to 17+78.5	12' Opening - RT.
20+25.5 to 20+37.5	12' Opening - RT.
20+78.8 to 20+90.8	12' Opening - RT.
21+29.0 to 21+41.0	12' Opening - RT.
24+60.5 to 24+72.5	12' Opening - RT.

New Storm Sewer Manholes

13+50	Type I CL Rim = 20.63
	Inv = 11.20

Items to be Removed by Others

13+12.1	RT. - AD Sign
22+93.0	LT. - Sprinkler
23+98.5	LT. - Sprinkler



ORIGINAL TOWN OF BILLINGS

Note: From Station 19+43 to Station 30+05 left extreme care in excavation and construction should be exercised to avoid damage to trees

Note: Contractor to notify Telephone Company prior to excavation between 22nd and 24th Street for field location of underground conduit

Trees to be Removed

12+28.5	RT.
12+62.5	RT.
12+95.5	RT.
13+43.7	LT.
13+65.8	LT.
13+94.2	LT.
14+19.4	LT.
14+44.0	LT.
14+65.0	LT.
14+80.7	LT.

Manholes Adjust to Grade

13+31.8	SAN. 9.7' LT.
15+09.3	SAN. 9.3' LT.
15+13.6	STM. 46.3' RT.
17+12.2	SAN. 12.5' LT.
18+85.0	STM. 4.6' LT.
18+91.7	39.3' LT.
19+02.5	STM. C-L
22+72.5	STM. 2.5' LT.

NEW STORM INLETS

STATION	LT.	RT.	INV.
13+47.0	33.5'	33.5'	16.52
14+92.7		37.3'	16.06
14+92.7	37.3'		16.40
15+52.2	37.3'		16.09
15+52.2		37.3'	16.28
18+66.0		37.3'	14.89
18+72.0	37.3'		14.79
19+32.0		37.3'	14.93
19+32.0	20.5'		14.85
22+83.0		37.3'	14.79
22+83.0	25.0'		14.35
23+12.3		37.3'	14.17

BACKSLOPE LIMITS INCLUDE ROUNDING CONSTRUCTION LIMITS TOP OF CUT TOE OF FILL

STATE OF MONTANA DEPARTMENT OF HIGHWAYS LAND REQUIRED FOR RIGHT OF WAY YELLOWSTONE COUNTY

MAP TRANS. TO R/W MAP REVISED 3-19-80, 3-26-80, 4-17-80, 7-22-80

B.P.R. APPROVAL AUTH. P&R ACQ. 12-13-79

SCALE 1"=50' MAP COMPLETED

OWNERSHIPS

PARCEL	NAME	ADDRESS	TOTAL AREA	GROSS R/W AREA	P.T.W. AREA	AREA TO BE ACQUIRED	REMAINDER		CONST. PERMEASMENT AREA	EASEMENT AREA
							LEFT	RIGHT		
29.	H.E. LILLIS 1/2 E.E. & C.J. & R.P. IRENE FRALLEY	3130 AVE. F, BILLINGS, MONT.							750.0'	
30.	E.R.P.R.S. NIBBE & DOUGLAS D. BRAUN	511 No. 20th St. BILLINGS MONT.								
31.	DELETED									
32.	INDUSTRIAL CORP. & D.J. V.A. DOERSCHLAG	3003 W. MACDONALD DR. BILLINGS								
33.	DELETED									
34.	INDUSTRIAL CORP. & D.J. V.A. DOERSCHLAG	3003 W. MACDONALD DR. BILLINGS								

* "AGREEMENT TO ENTER ON PROPERTY TO FORM LIGHT FOUNDATIONS"

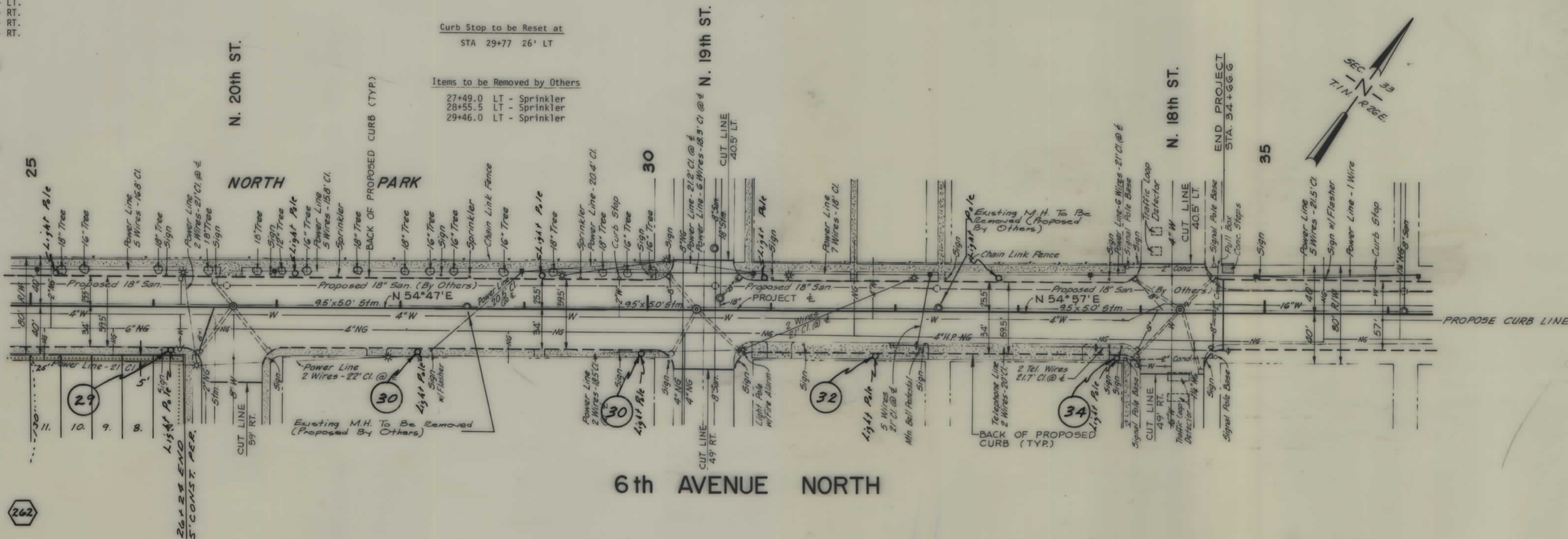
STATE	PROJECT NUMBER	SHEET NO.
MONT.	M-1018 (5)	4 OF 7

Curb Openings
 26+52.0 to 26+72.0 20' Opening - LT.
 27+73.5 to 27+88.5 15' Opening - RT.
 32+27.5 to 32+57.5 30' Opening - RT.
 33+25.0 to 33+50.0 25' Opening - RT.

New 6" x 5' Concrete Sidewalk
 26+52.0 to 26+72.0 LT.
 27+73.5 to 27+88.5 RT.
 32+27.5 to 32+57.5 RT.
 33+25.0 to 33+50.0 RT.

New 4" x 5' Concrete Sidewalk
 27+04.3 to 27.73.5 RT.
 27+88.5 to 30+05.2 RT.
 30+86.0 to 32+27.5 RT.
 30+86.0 to 33+84.5 LT.
 32+57.5 to 33+25.0 RT.
 33+50.0 to 33+84.5 RT.

Water Valve Boxes Adjust to Grade
 26+21.4 26.5' - RT
 26+64.9 41.0' - RT
 34+19.8 42.5' - RT
 34+64.0 7.0' - LT



Curb Stop to be Reset at
 STA 29+77 26' LT

Items to be Removed by Others
 27+49.0 LT - Sprinkler
 28+55.5 LT - Sprinkler
 29+46.0 LT - Sprinkler

New Storm Inlets

STATION	LT.	RT.	INV.
26+35.0		37.3'	13.77
26+50.0	25.0'	37.3'	13.89
26+93.3		37.3'	13.77
30+16.2	28.8'		13.61
30+16.2		37.3'	13.64
30+75.0	28.8'		13.41
30+75.0		37.3'	13.47
33+95.5	28.8'		12.35
33+95.5		37.3'	12.36
34+55.6	29.8'		12.71
34+55.6		48.5'	12.24

Note: All lateral lines for inlets will be 10" Dia. P.V.C. laid on a 1% min. slope.

Inlets and Laterals to be Removed

- Intersection - 20th St. - 2
- Intersection - 19th St. - 2
- Intersection - 18th St. - 3

Manholes Adjust to Grade

26+65.0	STII	3.0' LT.
30+40.0	STII	3.0' LT.
30+54.5	SAN	50.5' LT.
30+59.2	STII	10.0' LT.
34+32.0	STII	3.0' LT.

HORIZ. SCALE: 1" = 50'
 VERT. SCALE: 1" = 5'

ORIGINAL TOWN OF BILLINGS

BACKSLOPE LIMITS INCLUDE ROUNDING CONSTRUCTION LIMITS TOP OF CUT TOE OF FILL	STATE OF MONTANA DEPARTMENT OF HIGHWAYS LAND REQUIRED FOR RIGHT OF WAY YELLOWSTONE COUNTY
MAP TRANS. TO R/W MAP REVISED 3-19-80, 7-22-82	SCALE 1" = 50' MAP COMPLETED
B.P.R. APPROVAL AUTH. FOR ACQ. 12-13-79	

OWNERSHIPS

PARCEL	NAME	ADDRESS	TOTAL AREA	GROSS R/W AREA	P.T.W. AREA	AREA TO BE ACQUIRED	REMAINDER		CONST PERM AREA	EASEMENT AREA
							LEFT	RIGHT		
35	G.H. TANNER & DEAN A. SWANSON	724 MIDLAND BANK BUILDING 303 N. BEAURWAY BILLINGS, MT. 59101							420.01	
36	BILLINGS U.S. FEDERAL CREDIT UNION	P.O. BOX 1975 BILLINGS, MT. 59103							180.01	
37	W.E. & B.B. WALKER	P.O. BOX 1456 BILLINGS MT. 59103							30.01	
38	ROBERT F. & GLADYS E. STONE	819 POLY DR. BILLINGS MT. 59101							700.01	
39	M.W. WESTGADE & L. THOMAS % KEEFER, ROUDAL & HANSON	P.O. BOX 2061 BILLINGS MT. 59103							700.01	

STATE	PROJECT NUMBER	SHEET NO.
MONT	M-1018 (5)	5 OF 7

4TH AVE. NORTH

Trees and Stumps to be Removed

5+08.0	RT.
5+24.0	RT. (Stump)
5+37.0	RT. (Stump)
5+50.5	RT.
5+84.4	RT.
6+02.7	LT.
6+07.2	RT.
6+24.0	RT.
6+35.5	LT.
6+39.3	RT.
6+54.0	RT. (Stump)
6+55.5	LT.
6+71.6	RT.
6+75.5	LT.
6+89.0	RT.
7+00.0	LT.
7+06.8	RT.
7+16.7	RT. (Stump)
8+47.5	LT.
8+65.5	LT.
8+99.4	LT.
9+16.8	LT.
9+35.3	LT.
9+91.3	LT.
10+16.0	LT.
10+41.0	LT.
10+66.0	LT.
10+91.9	LT.

Note: New integral curb and gutter to be placed on each side of 4th Avenue along the entire length, including curb radius to side street match curb points. (See intersection detail sheets)

Encroachment by awning from Federal Building at Station 2+90 RT., to be cleared prior to construction or encroachment permit to be revaluated by D.O.H.

Buried power conduit to be relocated during construction, notify power company prior to excavation

Note: All salvage material is City of Billings property and shall be delivered to the City yards at 302 Edwards unless otherwise noted.

Note: The existing concrete base on 4th Avenue North between Sta. 0+40 to Sta. 15+20 shall be completely removed and shall be included in the unit price bid per C.V. street excavation. Additional material to match subgrade elevations will be paid under the borrow material bid price.

Curb Openings

0+62.0 to 0+82.0	20'	Open
1+02.0 to 1+22.0	20'	Open
1+80.0 to 2+00.0	20'	Open
2+70.0 to 2+90.0	20'	Open
4+87.0 to 5+02.0	15'	Open
5+59.0 to 5+79.0	20'	Open
6+24.0 to 6+36.0	12'	Open
8+46.0 to 8+60.0	14'	Open
9+02.0 to 9+38.0	36'	Open
9+40.0 to 9+60.0	20'	Open
10+18.0 to 10+30.0	12'	Open

New 6" x 5' Concrete

0+62.0 to 0+82.0	RT.
1+02.0 to 1+22.0	RT.
1+80.0 to 2+00.0	LT.
2+70.0 to 2+90.0	LT.
4+87.0 to 5+02.0	RT.
5+59.0 to 5+79.0	LT.
6+24.0 to 6+36.0	LT.
8+46.0 to 8+60.0	LT.
9+02.0 to 9+38.0	LT.
9+40.0 to 9+60.0	LT.
10+18.0 to 10+30.0	RT.

New 4" x 5' Concrete

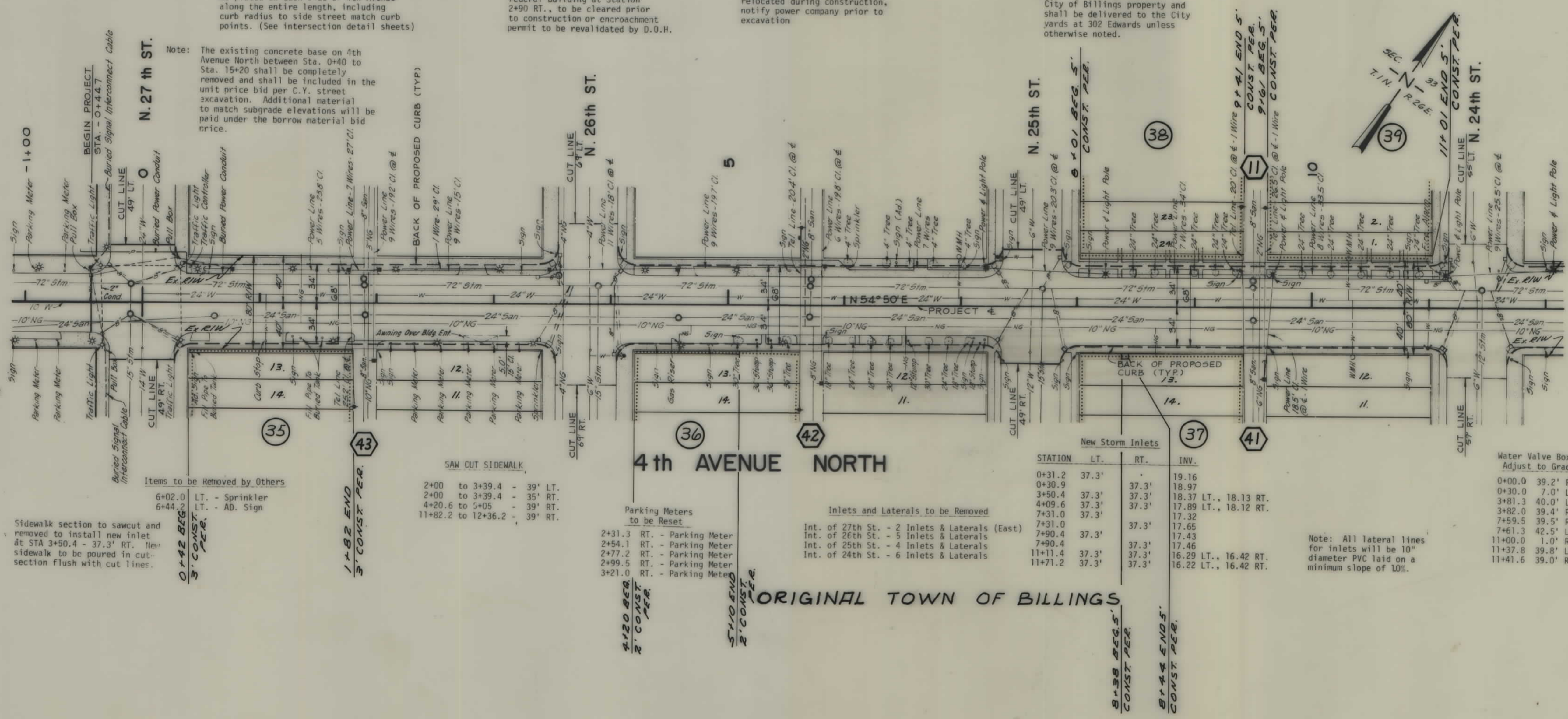
0+41.9 to 0+62.0	RT.
0+42.2 to 1+80.0	LT.
0+82.0 to 1+02.0	RT.
1+22.0 to 1+80.0	RT.
2+00.0 to 3+39.4	RT.
2+00.0 to 2+70.0	LT.
2+90.0 to 3+39.4	LT.
4+20.6 to 5+59.0	LT.
4+20.6 to 4+87.0	RT.
5+02.0 to 5+59.0	RT.
5+79.0 to 6+24.0	RT.
5+79.0 to 7+20.0	LT.
6+36.0 to 7+20.0	RT.
8+01.4 to 9+02.0	RT.
8+01.4 to 8+46.0	LT.
8+60.0 to 9+40.0	LT.
0+30.0 to 7.0' LT.	
3+81.3 to 40.0' LT.	
9+38.0 to 9+40.0	RT.
9+60.0 to 10+18.0	RT.
9+60.0 to 11+00.4	LT.
10+30.0 to 11+00.4	LT.
11+82.2 to 13+23.0	RT.
11+37.8 to 39.8' LT.	
11+82.2 to 12+46.5	LT.

Water Valve Boxes Adjust to Grade

0+00.0	39.2' RT.
0+30.0	7.0' LT.
3+81.3	40.0' LT.
3+82.0	39.4' RT.
7+59.5	39.5' RT.
7+61.3	42.5' LT.
11+00.0	1.0' RT.
11+37.8	39.8' LT.
11+41.6	39.0' RT.

Note: All lateral lines for inlets will be 10" diameter PVC laid on a minimum slope of 1.0%.

HORIZ. SCALE: 1" = 5'
VERT. SCALE: 1" = 5'



Manholes - Adjust to Grade

-0+10.0	STM.	16.0'	LT.
-0+10.0	STM.	10.5'	RT.
0+61.4	SAN.	11.5'	RT.
1+89.2	SAN.	21.2'	LT.
1+89.6	STM.	15.8'	LT.
1+89.7	STM.	10.0'	RT.
3+55.8	STM.	25.0'	LT.
3+89.3	STM.	16.0'	LT.
4+57.6	SAN.	11.5'	RT.
5+69.4	SAN.	10.2'	RT.
5+69.8	STM.	16.4'	LT.
5+70.4	SAN.	22.2'	LT.
7+70.0	STM.	15.5'	LT.
9+49.5	STM.	17.0'	LT.
9+49.5	SAN.	23.0'	LT.
9+50.0	SAN.	11.0'	RT.
11+45.3	STM.	16.0'	LT.

Sidewalk section to sawcut and removed to install new inlet at STA 3+50.4 - 37.3' RT. New sidewalk to be poured in cut-section flush with cut lines.

Items to be Removed by Others

6+02.0	LT.	- Sprinkler
6+44.2	LT.	- AD. Sign

SAW CUT SIDEWALK

2+00	to 3+39.4	- 39' LT.
2+00	to 3+39.4	- 35' RT.
4+20.6	to 5+05	- 39' RT.
11+82.2	to 12+36.2	- 39' RT.

Parking Meters to be Reset

2+31.3	RT.	- Parking Meter
2+54.1	RT.	- Parking Meter
2+77.2	RT.	- Parking Meter
2+99.5	RT.	- Parking Meter
3+21.0	RT.	- Parking Meter

Inlets and Laterals to be Removed

Int. of 27th St.	- 2 Inlets & Laterals (East)
Int. of 26th St.	- 5 Inlets & Laterals
Int. of 25th St.	- 4 Inlets & Laterals
Int. of 24th St.	- 6 Inlets & Laterals

New Storm Inlets

STATION	LT.	RT.	INV.
0+31.2	37.3'		19.16
0+30.9		37.3'	18.97
3+50.4	37.3'	37.3'	18.37 LT., 18.13 RT.
4+09.6	37.3'	37.3'	17.89 LT., 18.12 RT.
7+31.0	37.3'		17.32
7+31.0		37.3'	17.65
7+90.4	37.3'		17.43
7+90.4		37.3'	17.46
11+11.4	37.3'		16.29 LT., 16.42 RT.
11+71.2	37.3'		16.22 LT., 16.42 RT.

BACKSLOPE LIMITS INCLUDE ROUNDING CONSTRUCTION LIMITS TOP OF CUT TOE OF FILL

STATE OF MONTANA DEPARTMENT OF HIGHWAYS LAND REQUIRED FOR RIGHT OF WAY YELLOWSTONE COUNTY

MAP TRANS. TO R/W MAP REVISED: 12-8-81

B.P.R. APPROVAL AUTH. P.D.C. NO. 7-27-81

SCALE 1" = .50' MAP COMPLETED

OWNERSHIPS

PARCEL	NAME	ADDRESS	TOTAL AREA	GROSS R/W AREA	P.T.W. AREA	AREA TO BE ACQUIRED	REMAINDER LEFT	REMAINDER RIGHT	CONST. PERM. AREA	EASEMENT AREA
40	PETE SCHONIAWS	983 DION ST. BILLINGS MT. 59101							273.0'	
41	JAMES RUSSELL	236 PRICKETT LANE BILLINGS MT. 59102							700.0'	
42	QUALITY CONCRETE CO.	P.O. BOX 2055 BILLINGS MT. 59103							480.0'	
43	FRANK & FRANCESCA B. THOMAS	P.O. BOX 2063 BILLINGS MT. 59103							410.0'	
44	ALDRICH & COMPANY	P.O. BOX 2551 BILLINGS MT. 59103							735.0'	
45	DELETED									

STATE	PROJECT NUMBER	SHEET NO.
MONT.	M-1018 (5)	6 OF 7

4TH AVE. NORTH

Items to be Removed by Others

15+70.0	LT.	- Sprinkler
15+90.0	LT.	- Sprinkler
16+11.0	LT.	- Sprinkler
16+30.0	LT.	- Sprinkler
16+50.0	LT.	- Sprinkler
16+70.0	LT.	- Sprinkler
20+18.5	LT.	- AD. Sign
20+91.5	LT.	- AD. Sign

SAW CUT SIDEWALK

11+82.2	to 13+23	- 39' LT.
13+43.0	to 14+79	- 39' LT.
15+62.2	to 17+01	- 39' LT.
17+21	to 17+71	- 39' LT.
21+32.3	to 24+34.5	- 39' RT.

New Storm Sewer Manholes

15+11.5 - 30.0' RT new Type I Manhole, 9.30' deep
50' New 15" RCP storm main to connect new manhole and existing 72" RCP
Abandon existing manhole-10.6' RT

Water Valve Boxes

15+22.1	40.0'	RT.
15+61.6	7.5'	LT.
16+05.0	4.5'	LT.
19+03.6	40.0'	RT.
19+06.4	42.9'	RT.
22+90.4	5.3'	RT.

Manholes - Adjust to Grade

13+32.0	SAN.	11.5'	RT.
13+32.6	SAN.	22.0'	LT.
14+74.5	STM.	16.0'	LT.
14+98.3	SAN.	30.5'	LT.
15+36.5	SAN.	10.6'	RT.
17+11.0	SAN.	10.5'	RT.
18+96.5	STM.	23.0'	RT.
20+91.2	SAN.	13.6'	RT.
22+36.6	STM.	21.0'	RT.
24+22.2	STM.	20.5'	RT.
24+74.0	SAN.	12.0'	RT.

New 6" x 5' Conc. Sidewalk

12+46.5	to 12+56.5	LT.
13+23.0	to 13+43.0	LT & RT
17+01.0	to 17+21.0	LT & RT
17+60.0	to 17+90.0	LT
18+75.0	to 18+90.0	LT
19+10.0	to 19+25.0	LT
19+35.0	to 19+50.0	LT
19+65.0	to 19+80.0	LT
19+85.0	to 19+97.0	LT
20+30.0	to 20+50.0	RT
20+82.0	to 21+02.0	RT
21+15.0	to 21+45.0	LT
21+90.0	to 22+30.0	RT
22+10.0	to 22+35.0	LT
22+95.0	to 23+20.0	LT
23+60.0	to 23+90.0	LT
24+11.0	to 24+36.0	LT
24+62.0	to 24+82.0	RT

New 4" x 5' Conc. Sidewalk

12+56.5	to 13+23.0	LT
13+43.0	to 14+81.5	RT
13+43.0	to 14+74.0	LT
15+62.2	to 17+01.0	LT & RT
17+21.0	to 18+61.2	RT
17+21.0	to 17+60.0	LT
17+90.0	to 18+75.0	LT
18+90.0	to 19+10.0	LT
19+25.0	to 19+35.0	LT
19+43.0	to 19+65.0	RT
19+50.0	to 19+85.0	LT
19+80.0	to 20+30.0	RT
19+97.0	to 20+53.0	LT
20+50.0	to 20+82.0	RT
20+81.0	to 21+15.0	LT
21+02.0	to 21+04.3	RT
21+32.3	to 21+90.0	RT
21+45.0	to 22+10.0	LT
22+30.0	to 24+11.0	RT
22+35.0	to 22+95.0	LT
23+20.0	to 23+60.0	LT
23+90.0	to 24+83.7	LT
24+82.0	to 26+22.3	RT

Trees to be Removed

13+59.0	RT.
13+92.3	RT.
14+21.5	RT.
14+48.0	RT.
14+79.2	RT.
15+75.5	LT.
15+80.7	RT.
15+98.5	RT.
15+98.7	LT.
16+19.3	LT.
16+37.5	LT.
16+52.2	RT.
16+58.8	LT.
16+68.5	RT.
16+79.5	LT.
16+83.5	LT.

Curb Openings

12+46.5	to 12+56.5	10'	Opening - LT.
13+23.0	to 13+43.0	20'	Opening - LT. & RT.
17+01.0	to 17+21.0	20'	Opening - LT. & RT.
17+60.0	to 17+90.0	30'	Opening - LT.
18+75.0	to 18+90.0	15'	Opening - LT.
19+10.0	to 19+25.0	15'	Opening - LT.
19+35.0	to 19+50.0	15'	Opening - LT.
19+65.0	to 19+80.0	15'	Opening - RT.
19+85.0	to 19+97.0	12'	Opening - LT.
20+30.0	to 20+50.0	20'	Opening - RT.
20+82.0	to 21+02.0	20'	Opening - RT.
21+15.0	to 21+45.0	30'	Opening - LT.
21+90.0	to 22+30.0	40'	Opening - RT.
22+10.0	to 22+35.0	25'	Opening - LT.
22+95.0	to 23+20.0	25'	Opening - LT.
23+60.0	to 23+90.0	30'	Opening - LT.
24+11.0	to 24+36.0	25'	Opening - RT.
24+62.0	to 24+82.0	20'	Opening - RT.

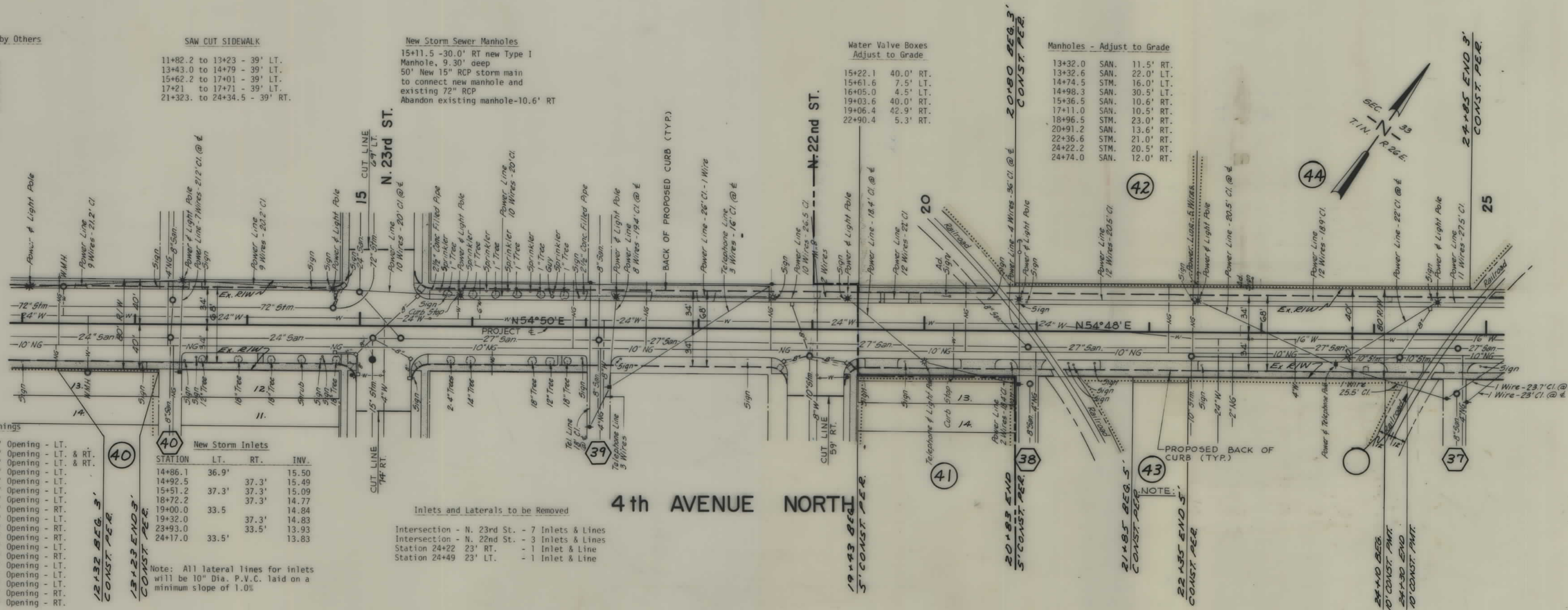
New Storm Inlets

STATION	LT.	RT.	INV.
14+86.1		36.9'	15.50
14+92.5		37.3'	15.49
15+51.2	37.3'	37.3'	15.09
18+72.2		37.3'	14.77
19+00.0		33.5'	14.84
19+32.0		37.3'	14.83
23+93.0		33.5'	13.93
24+17.0		33.5'	13.83

Note: All lateral lines for inlets will be 10" Dia. P.V.C. laid on a minimum slope of 1.0%

Inlets and Laterals to be Removed

Intersection - N. 23rd St. - 7 Inlets & Lines
Intersection - N. 22nd St. - 3 Inlets & Lines
Station 24+22 23' RT. - 1 Inlet & Line
Station 24+49 23' LT. - 1 Inlet & Line



4th AVENUE NORTH

ORIGINAL TOWN OF BILLINGS

BACKSLOPE LIMITS INCLUDE ROUNDING CONSTRUCTION LIMITS TOP OF CUT TOE OF FILL	STATE OF MONTANA DEPARTMENT OF HIGHWAYS LAND REQUIRED FOR RIGHT OF WAY YELLOWSTONE COUNTY SCALE 1" = 50' MAP COMPLETED
MAP TRANS. TO R/W MAP REVISED 2-3-82, 7-20-82 B.P.R. APPROVAL AUTH. FOR REG. 9-27-81	

OWNERSHIPS									
PARCEL	NAME	ADDRESS	TOTAL AREA	GROSS R/W AREA	P.T.W. AREA	AREA TO BE ACQUIRED	REMAINDER		CONST PERMEASUREMENT AREA
							LEFT	RIGHT	
44	ALDRICH & COMPANY	P.O. BOX 2551 BILLINGS MT. 59103	59103						6090'
46	MONTANA/DAKOTA UTILITIES	2603 2 ND AVE. N. BILLINGS MT. 59103	59103						16'

STATE	PROJECT NUMBER	SHEET NO.
MONT	M-1018 (5)	7 OF 7

4TH AVE. NORTH

CURB OPENINGS

28+43.0 to 28+63.0	20'	Opening - RT.
31+42.0 to 31+54.0	12'	Opening - LT.
31+96.5 to 32+08.5	12'	Opening - LT.
32+22.0 to 32+42.0	20'	Opening - LT. & RT.
33+00.0 to 33+15.0	15'	Opening - LT.
33+39.0 to 33+59.0	20'	Opening - RT.

New 6" x 5' Concrete Sidewalk

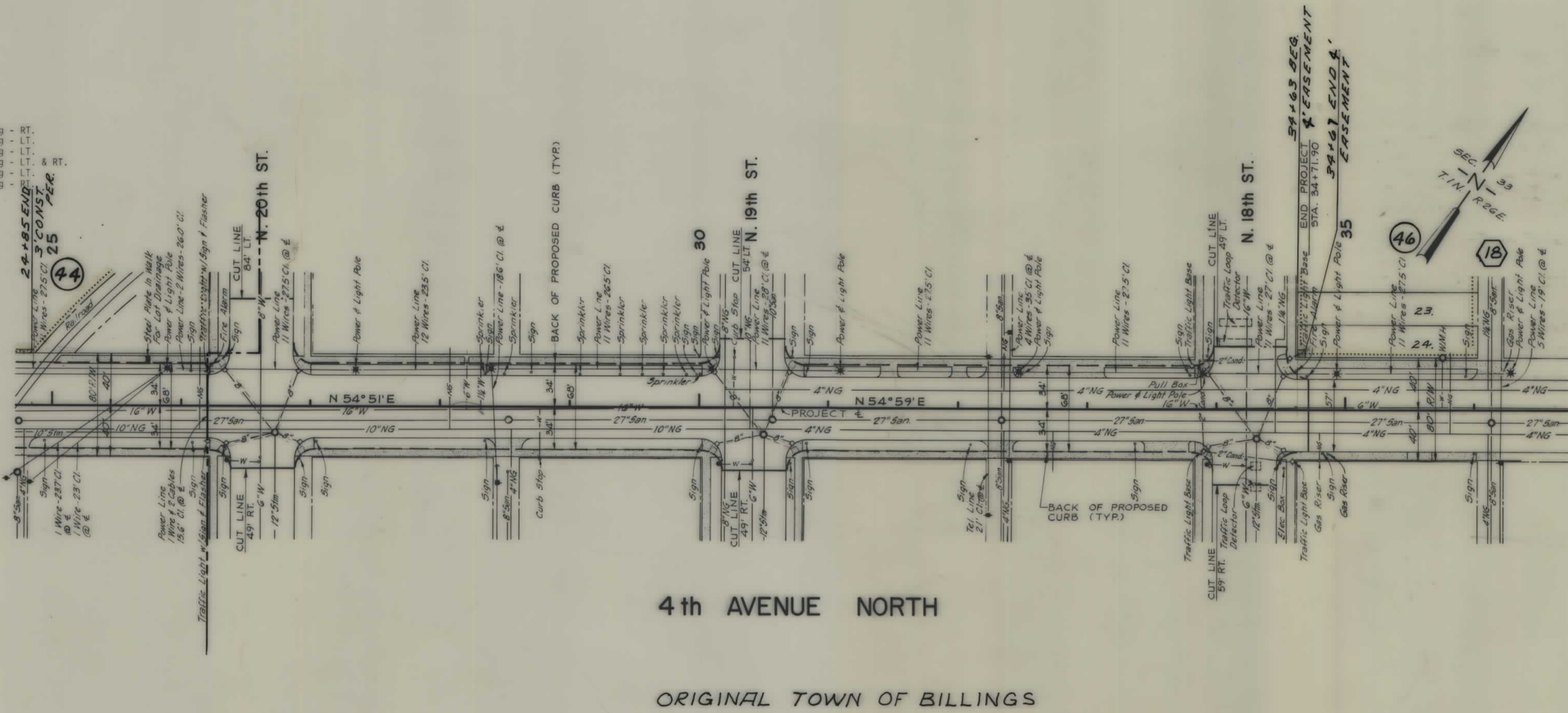
28+43.0 to 28+63.0	RT.
31+42.0 to 31+54.0	LT.
31+96.5 to 32+08.5	LT.
32+22.0 to 32+42.0	LT. & RT.
33+00.0 to 33+15.0	LT.
33+39.0 to 33+59.0	RT.

New 4" x 5' Concrete Sidewalk

25+11.7 to 26+22.3	LT.
27+03.15 to 30+02.6	LT.
27+03.15 to 28+43.0	RT.
28+63.0 to 30+02.6	RT.
30+83.4 to 31+42.0	LT.
30+83.4 to 32+22.0	RT.
31+54.0 to 31+96.5	LT.
32+08.5 to 32+22.0	LT.
32+42.0 to 33+39.0	RT.
32+42.0 to 33+00.0	LT.
33+15.0 to 33+85.2	LT.
33+59.0 to 33+85.2	RT.

SAW CUT SIDEWALK

28+33.2 to 29+53.2	- 39' LT.
31+33.4 to 32+22	- 39' LT.
32+42	- 39' LT.



4th AVENUE NORTH
ORIGINAL TOWN OF BILLINGS

New Storm Inlets

STATION	LT.	RT.	IN.
26+33.3	37.3'	37.3'	11.94
26+92.15	37.3'	37.3'	11.94
30+13.6	37.3'	37.3'	11.94 LT, 11.68 RT
30+72.4	37.3'	37.3'	11.55
33+96.2	37.3'	37.3'	10.80
34+53.25	37.3'	37.3'	10.56
34+60.9	37.3'		10.55

Note: All lateral lines will be 10" Dia. R.C.P. minimum slope of 1.0%

Inlets and Laterals to:
 Intersection - 20th St. - 4 Inlets/Laterals
 Intersection - 19th St. - 4 Inlets/Laterals
 Intersection - 18th St. - 4 Inlets/Laterals

Items to be Removed by:
 28+36.0 LT. - Sprinkler
 28+50.0 LT. - Sprinkler
 29+09.5 LT. - Sprinkler
 29+40.8 LT. - Sprinkler
 29+57.5 LT. - Sprinkler
 29+74.0 LT. - Sprinkler
 29+92.0 LT. - Sprinkler
 30+03.3 LT. - Sprinkler

Manholes - Adjust to Grade		Water Valve Boxes Adjust to Grade	
26+72.4	STM. 20.7' RT.	26+59.7	43.6' RT
28+53.0	SAN. 10.3' RT.	30+29.5	39.0' LT
30+51.0	STM. 21.0' RT.	30+40.2	49.0' RT
30+58.0	SAN. 9.5' RT.	30+42.2	41.5' RT
32+34.5	SAN. 8.7' RT.	34+22.0	43.8' RT
34+32.8	STM. 22.5' RT.	34+24.5	29.0' RT
		34+63.9	2.5' LT

BACKSLOPE LIMITS INCLUDE ROUNDING CONSTRUCTION LIMITS TOP OF CUT TOE OF FILL	STATE OF MONTANA DEPARTMENT OF HIGHWAYS LAND REQUIRED FOR RIGHT OF WAY YELLOWSTONE COUNTY
MAP TRANS. TO R/W MAP REVISED: 12-8-81	SCALE 1" = 50' MAP COMPLETED
B.P.R. APPROVAL AUTH. FOR R/W 9-29-81, 3-1-82	