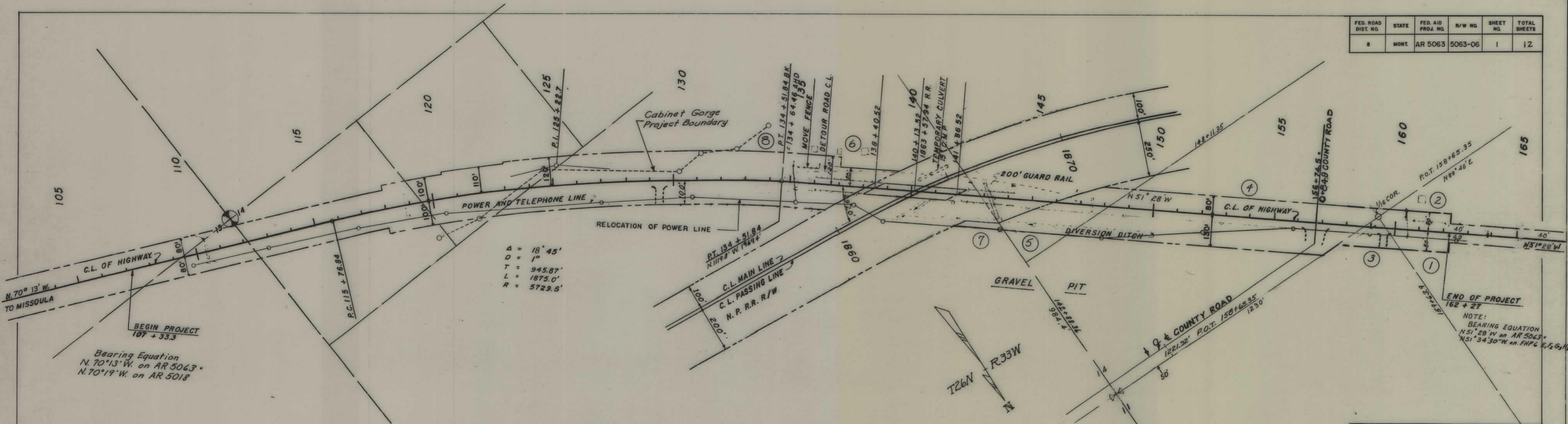


PLANS  
NOT  
TO  
SCALE

FED. ROAD DIST. NO.	STATE	FED. AID PROJ. NO.	R/W NO.	SHEET NO.	TOTAL SHEETS
8	MONT.	AR 5063	5063-06	1	12



$\Delta = 18^{\circ} 45'$   
 $D = 1^{\circ}$   
 $T = 945.87'$   
 $L = 1875.0'$   
 $R = 5729.5'$

Bearing Equation  
 $N. 70^{\circ} 13' W.$  on AR 5063  
 $N. 70^{\circ} 19' W.$  on AR 5018

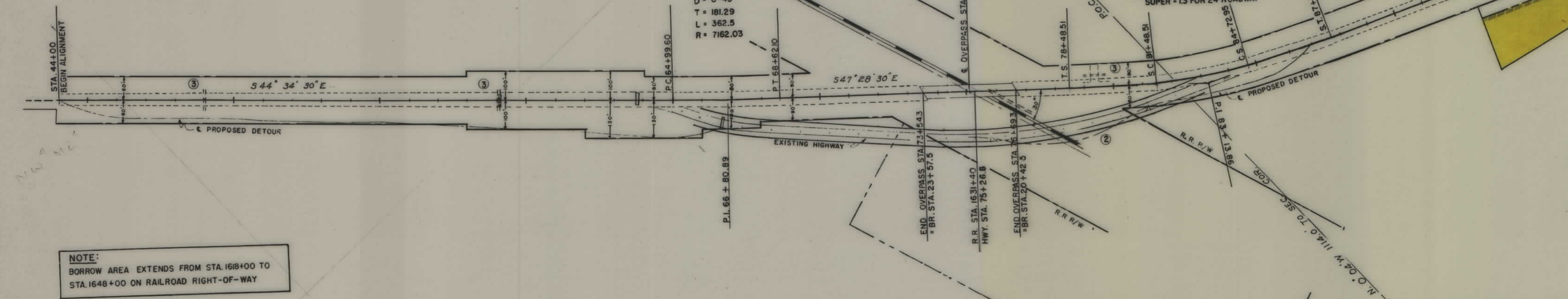
END OF PROJECT  
 162 + 27  
 NOTE:  
 BEARING EQUATION  
 $N 51^{\circ} 28' W$  on AR 5063  
 $N 51^{\circ} 34' 30'' W$  on FHP 6 E, 2, 6, 16

DESCRIPTIONS WRITTEN BY \_\_\_\_\_  
 DESCRIPTIONS CHECKED BY \_\_\_\_\_  
 MAPS COMPLETED BY \_\_\_\_\_  
 MAPS TO BUR. PUB. ROADS \_\_\_\_\_  
 MAPS TO CONSTRUCTION \_\_\_\_\_

STATE OF MONTANA  
**STATE HIGHWAY COMMISSION**  
**LAND REQUIRED FOR RIGHT OF WAY**  
 SANDERS COUNTY  
 SCALE 1" = 200' MAP APPROVED BY \_\_\_\_\_

FED. ROAD DIST. NO.	STATE	FED. AID PROJ. NO.	R/W NO.	SHEET NO.	TOTAL SHEETS
8	MONT.	AR 5063	5063-06	2	12

Bearing Equation  
 $S. 44^{\circ} 09' 30'' E.$  on FHP 6 B, C, 14 =  
 $S. 44^{\circ} 34' 30'' E.$  on AR 5063



$\Delta = 18^{\circ} 44' LT.$   
 $\Delta s = 4^{\circ} 30'$   
 $\Delta c = 9^{\circ} 44'$   
 $D = 3^{\circ}$   
 $T_s = 465.35$   
 $L_s = 300'$   
 $L_c = 324.44$   
 $R = 1910.0$

$\Delta = 2^{\circ} 54' LT.$   
 $D = 0^{\circ} 48'$   
 $T = 181.29$   
 $L = 362.5$   
 $R = 7162.03$

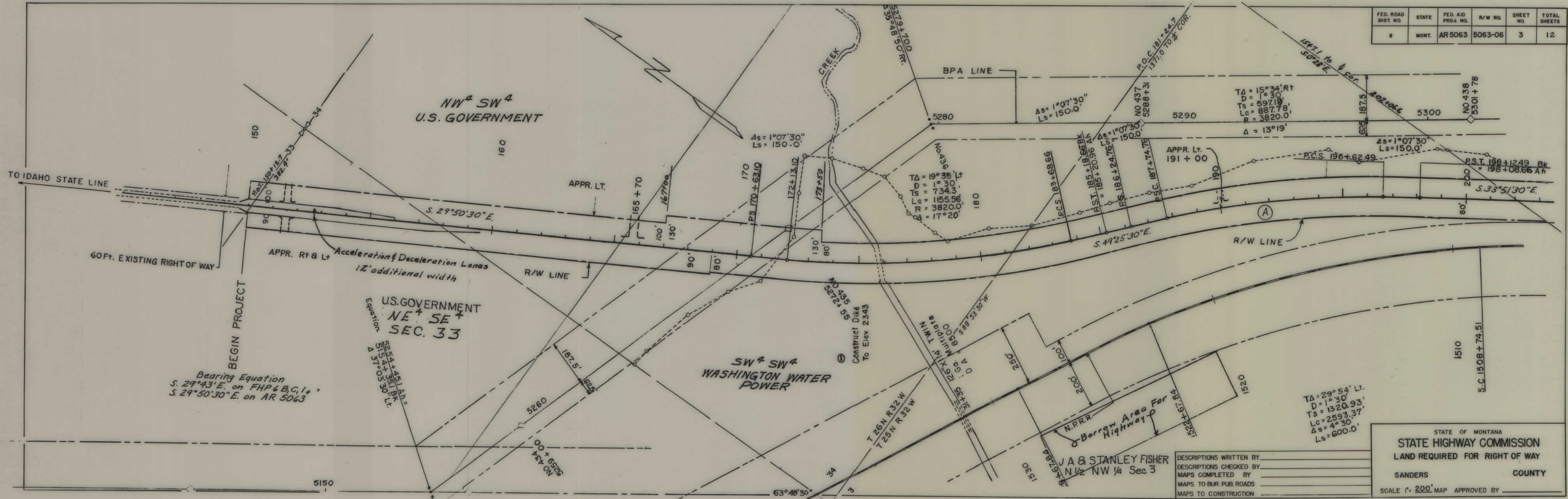
STA. 97+50 = SURVEY STA 97+54.36 =  
 HWY. STA. 98+65.96 END ALIGNMENT  
 Bearing Equation  
 $S. 66^{\circ} 12' 30'' E.$  on AR 5063 =  
 $S. 65^{\circ} 47' 30'' E.$  on FHP 6 B, C, 14

NOTE:  
 BORROW AREA EXTENDS FROM STA. 1618+00 TO  
 STA. 1648+00 ON RAILROAD RIGHT-OF-WAY

DESCRIPTIONS WRITTEN BY \_\_\_\_\_  
 DESCRIPTIONS CHECKED BY \_\_\_\_\_  
 MAPS COMPLETED BY \_\_\_\_\_  
 MAPS TO BUR. PUB. ROADS \_\_\_\_\_  
 MAPS TO CONSTRUCTION \_\_\_\_\_

STATE OF MONTANA  
 STATE HIGHWAY COMMISSION  
 LAND REQUIRED FOR RIGHT OF WAY  
 SANDERS COUNTY  
 SCALE 1" = 200' MAP APPROVED BY \_\_\_\_\_

FED. ROAD DIST. NO.	STATE	FED. AID PROJ. NO.	R/W NO.	SHEET NO.	TOTAL SHEETS
8	MONT.	AR 5063	5063-06	3	12



Bearing Equation  
 $S. 29^{\circ}43'E.$  on FHP 6 B, C, 1  
 $S. 29^{\circ}50'30''E.$  on AR 5063

Equation  
 $S. 54^{\circ}14'51''E.$   
 $S. 3^{\circ}47'35''E.$   
 $S. 3^{\circ}03'30''E.$

$\Delta = 29^{\circ}54' Lt.$   
 $D = 1^{\circ}30'$   
 $Ts = 1320.93'$   
 $Lc = 2593.37'$   
 $\Delta s = 4^{\circ}30'$   
 $Ls = 600.0'$

DESCRIPTIONS WRITTEN BY \_\_\_\_\_  
 DESCRIPTIONS CHECKED BY \_\_\_\_\_  
 MAPS COMPLETED BY \_\_\_\_\_  
 MAPS TO BUR. PUB. ROADS \_\_\_\_\_  
 MAPS TO CONSTRUCTION \_\_\_\_\_

STATE OF MONTANA  
 STATE HIGHWAY COMMISSION  
 LAND REQUIRED FOR RIGHT OF WAY  
 SANDERS COUNTY  
 SCALE 1" = 200' MAP APPROVED BY \_\_\_\_\_

TWWP Co.  
E 1/2 Sec. 3

FED. ROAD DIST. NO.	STATE	FED. AID PROJ. NO.	R/W NO.	SHEET NO.	TOTAL SHEETS
8	MONT.	AR 5063	5063-06	4	12

DR. EMIL TORP (A.C.M. Co.)  
NW 1/4 Sec. 11

$\Delta = 13^{\circ}21' Rt$   
 $D = 1^{\circ}00'$   
 $T = 670.58'$   
 $L = 1335.0'$   
 $R = 5730.0'$

$\Delta = 12^{\circ}05' Rt$   
 $D = 1^{\circ}00'$   
 $T = 606.46'$   
 $L = 1208.33'$   
 $R = 5730.0'$

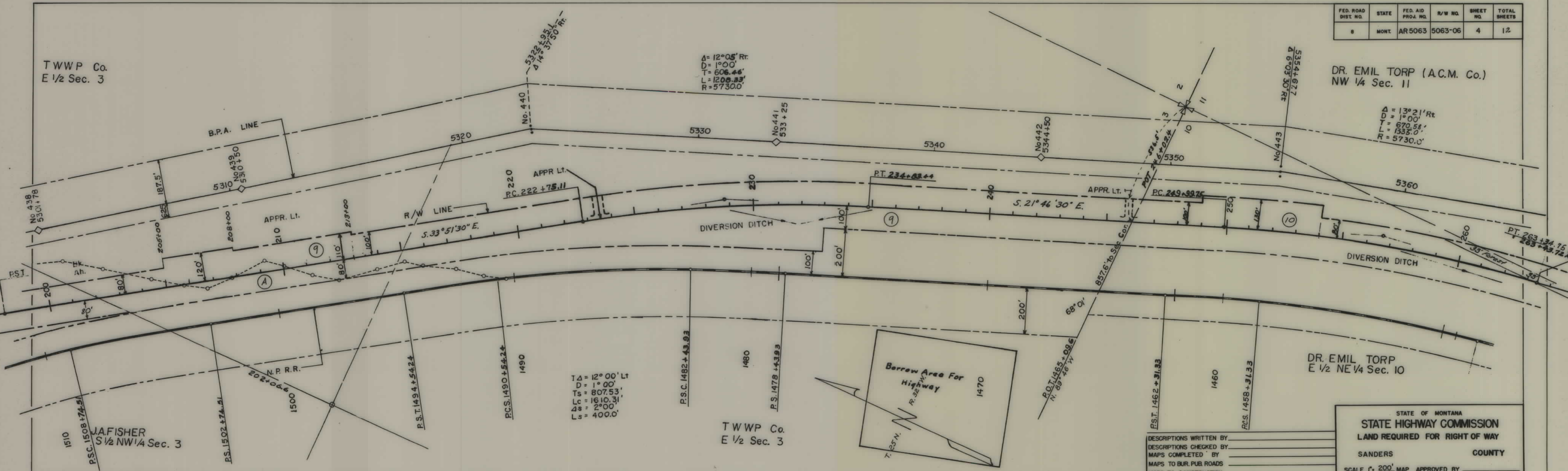
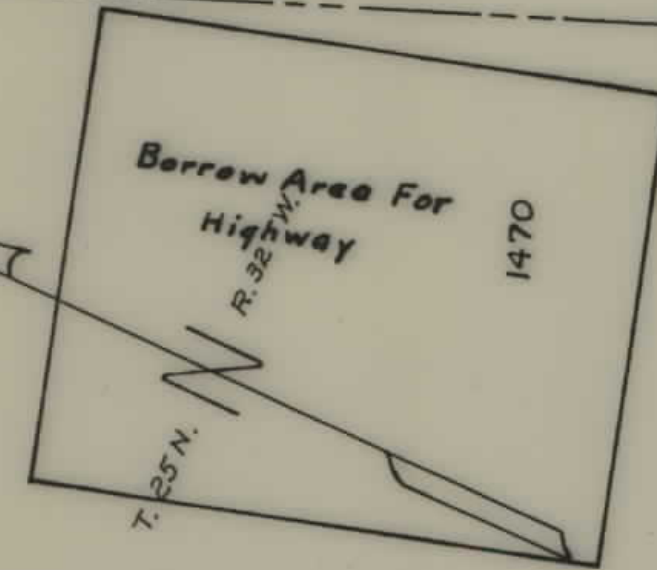
$T\Delta = 12^{\circ}00' Lt$   
 $D = 1^{\circ}00'$   
 $Ts = 807.53'$   
 $Lc = 1610.31'$   
 $\Delta s = 2^{\circ}00'$   
 $Ls = 4000.0'$

TWWP Co.  
E 1/2 Sec. 3

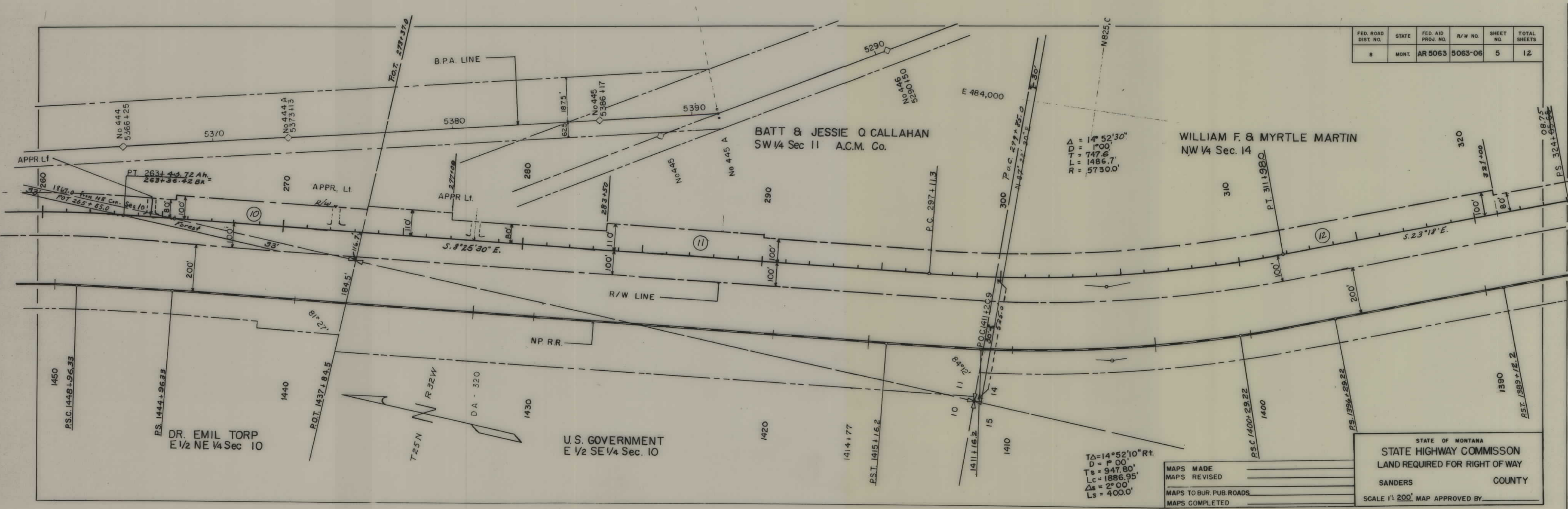
DR. EMIL TORP  
E 1/2 NE 1/4 Sec. 10

DESCRIPTIONS WRITTEN BY \_\_\_\_\_  
 DESCRIPTIONS CHECKED BY \_\_\_\_\_  
 MAPS COMPLETED BY \_\_\_\_\_  
 MAPS TO BUR. PUB. ROADS \_\_\_\_\_  
 MAPS TO CONSTRUCTION \_\_\_\_\_

STATE OF MONTANA  
**STATE HIGHWAY COMMISSION**  
 LAND REQUIRED FOR RIGHT OF WAY  
 SANDERS COUNTY  
 SCALE 1" = 200' MAP APPROVED BY \_\_\_\_\_



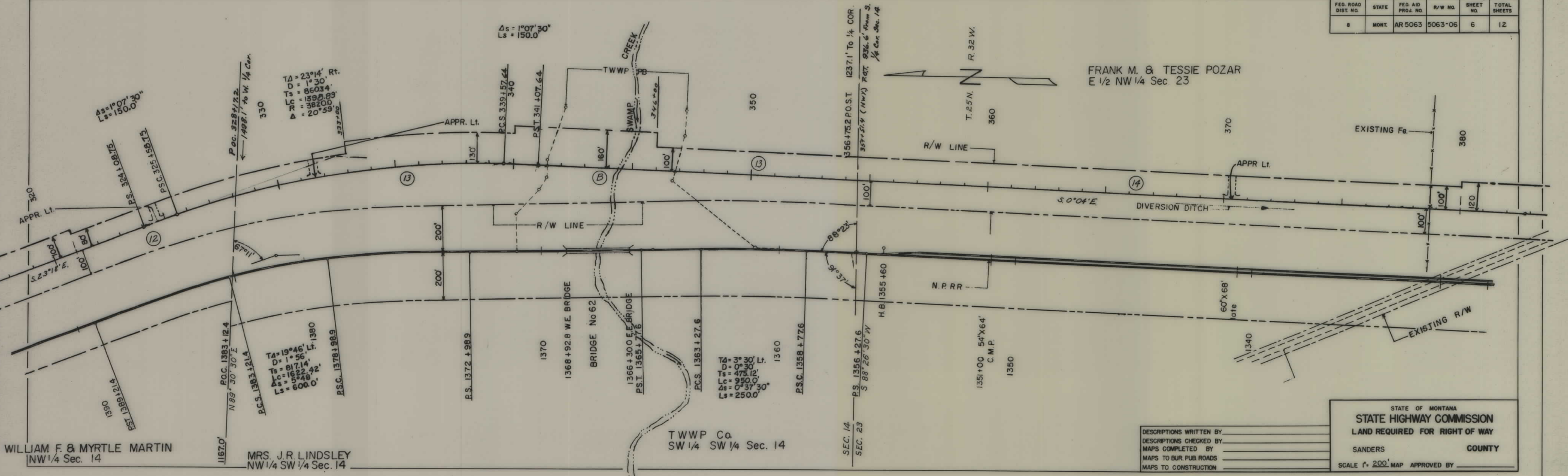
FED. ROAD DIST. NO.	STATE	FED. AID PROJ. NO.	R/W NO.	SHEET NO.	TOTAL SHEETS
8	MONT.	AR 5063	5063-06	5	12



MAPS MADE \_\_\_\_\_  
 MAPS REVISED \_\_\_\_\_  
 MAPS TO BUR. PUB. ROADS \_\_\_\_\_  
 MAPS COMPLETED \_\_\_\_\_

STATE OF MONTANA  
 STATE HIGHWAY COMMISSION  
 LAND REQUIRED FOR RIGHT OF WAY  
 SANDERS COUNTY  
 SCALE 1" = 200' MAP APPROVED BY \_\_\_\_\_

FED. ROAD DIST. NO.	STATE	FED. AID PROJ. NO.	R/W NO.	SHEET NO.	TOTAL SHEETS
8	MONT.	AR 5063	5063-06	6	12



FRANK M. & TESSIE POZAR  
E 1/2 NW 1/4 Sec. 23

WILLIAM F. & MYRTLE MARTIN  
NW 1/4 Sec. 14

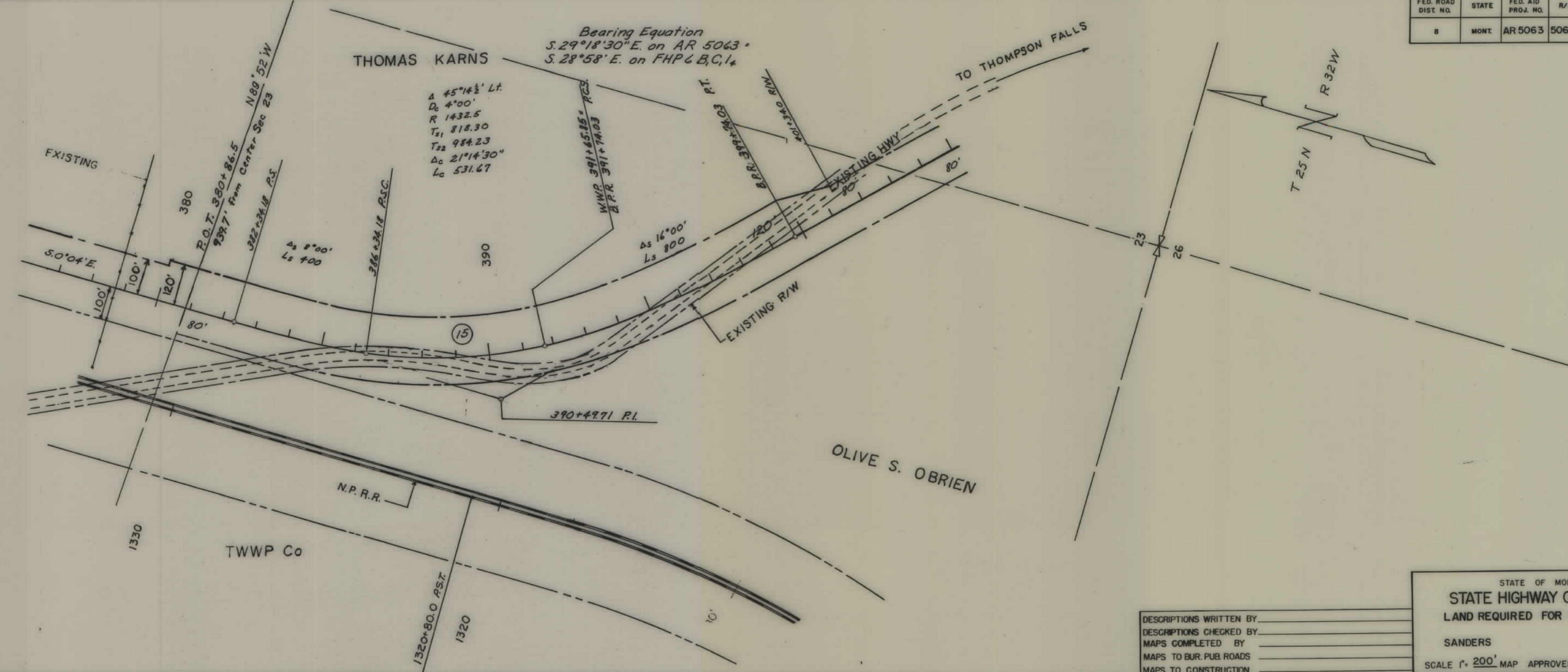
MRS. J. R. LINDSLEY  
NW 1/4 SW 1/4 Sec. 14

TWHP Co.  
SW 1/4 SW 1/4 Sec. 14

DESCRIPTIONS WRITTEN BY \_\_\_\_\_  
 DESCRIPTIONS CHECKED BY \_\_\_\_\_  
 MAPS COMPLETED BY \_\_\_\_\_  
 MAPS TO BUR. PUB. ROADS \_\_\_\_\_  
 MAPS TO CONSTRUCTION \_\_\_\_\_

STATE OF MONTANA  
 STATE HIGHWAY COMMISSION  
 LAND REQUIRED FOR RIGHT OF WAY  
 SANDERS COUNTY  
 SCALE 1" = 200' MAP APPROVED BY \_\_\_\_\_

FED. ROAD DIST. NO.	STATE	FED. AID PROJ. NO.	R/W NO.	SHEET NO.	TOTAL SHEETS
8	MONT.	AR 5063	5063-06	7	12



DESCRIPTIONS WRITTEN BY \_\_\_\_\_  
 DESCRIPTIONS CHECKED BY \_\_\_\_\_  
 MAPS COMPLETED BY \_\_\_\_\_  
 MAPS TO BUR. PUB. ROADS \_\_\_\_\_  
 MAPS TO CONSTRUCTION \_\_\_\_\_

STATE OF MONTANA  
**STATE HIGHWAY COMMISSION**  
 LAND REQUIRED FOR RIGHT OF WAY  
 SANDERS COUNTY  
 SCALE 1" = 200' MAP APPROVED BY \_\_\_\_\_

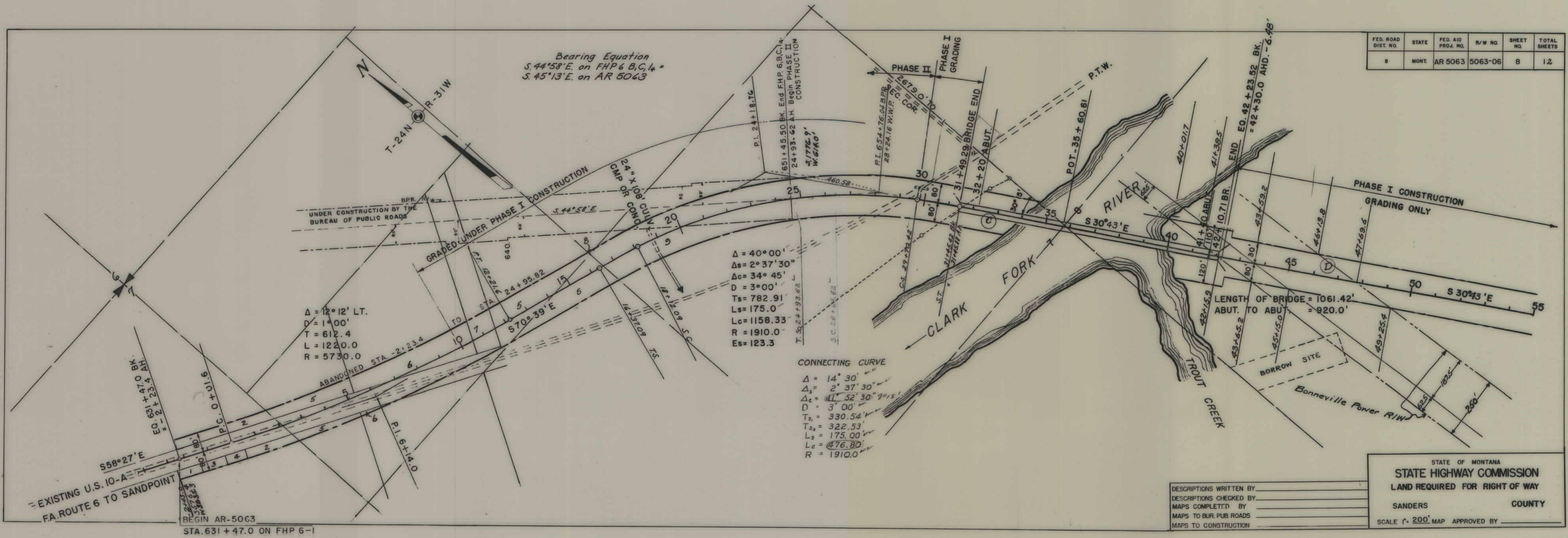


FED. ROAD DIST. NO.	STATE	FED. AID PROJ. NO.	R/W NO.	SHEET NO.	TOTAL SHEETS
8	MONT.	AR 5063	5063-06	8	12

Bearing Equation  
 S. 44° 58' E. on FHP 6 B, C, 14 =  
 S. 45° 13' E. on AR 5063

Δ = 40° 00'  
 Δs = 2° 37' 30"  
 Δc = 34° 45'  
 D = 3° 00'  
 Ts = 782.91  
 Ls = 175.0  
 Lc = 1158.33  
 R = 1910.0  
 Es = 123.3

CONNECTING CURVE  
 Δ = 14° 30'  
 Δs = 2° 37' 30"  
 Δc = 11° 52' 30" 9° 15'  
 D = 3° 00'  
 Ts = 330.54  
 Ts = 322.53  
 Ls = 175.00  
 Lc = 476.80  
 R = 1910.0

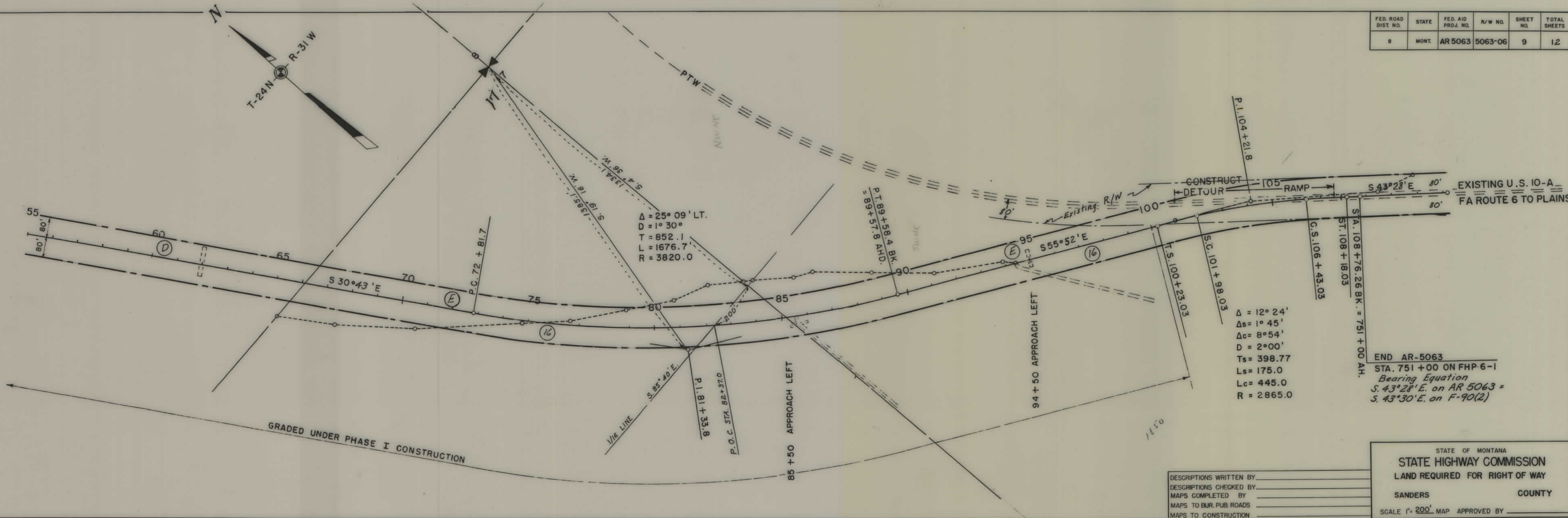
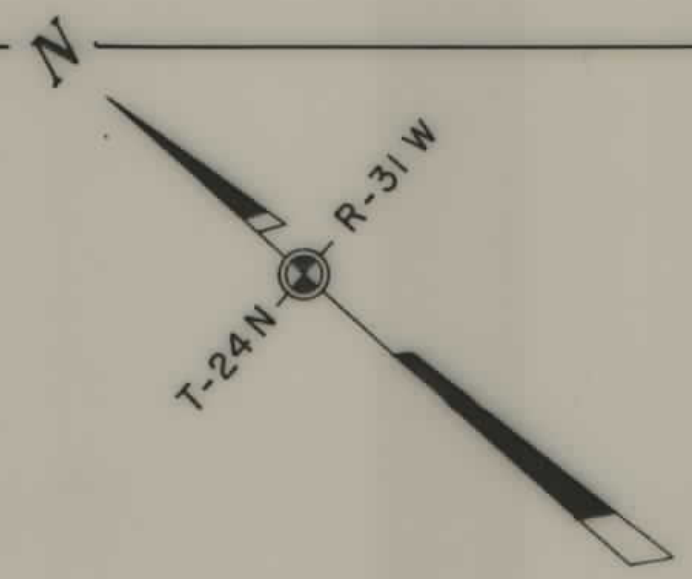


DESCRIPTIONS WRITTEN BY \_\_\_\_\_  
 DESCRIPTIONS CHECKED BY \_\_\_\_\_  
 MAPS COMPLETED BY \_\_\_\_\_  
 MAPS TO BUR. PUB. ROADS \_\_\_\_\_  
 MAPS TO CONSTRUCTION \_\_\_\_\_

STATE OF MONTANA  
**STATE HIGHWAY COMMISSION**  
 LAND REQUIRED FOR RIGHT OF WAY  
 SANDERS COUNTY  
 SCALE 1" = 200' MAP APPROVED BY \_\_\_\_\_

BEGIN AR-5063  
 STA. 631 + 47.0 ON FHP 6-1

FED. ROAD DIST. NO.	STATE	FED. AID PROJ. NO.	R/W NO.	SHEET NO.	TOTAL SHEETS
8	MONT.	AR 5063	5063-06	9	12

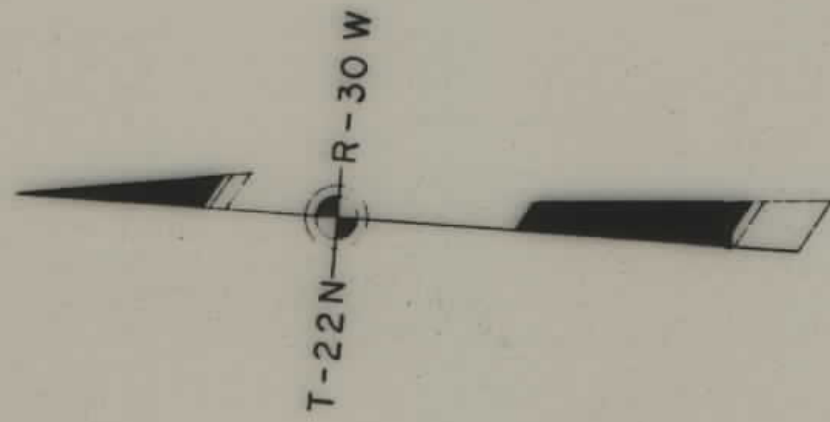


END AR-5063  
 STA. 751 + 00 ON FHP-6-1  
 Bearing Equation  
 S. 43° 28' E. on AR 5063 =  
 S. 43° 30' E. on F-90(2)

DESCRIPTIONS WRITTEN BY \_\_\_\_\_  
 DESCRIPTIONS CHECKED BY \_\_\_\_\_  
 MAPS COMPLETED BY \_\_\_\_\_  
 MAPS TO BUR. PUB. ROADS \_\_\_\_\_  
 MAPS TO CONSTRUCTION \_\_\_\_\_

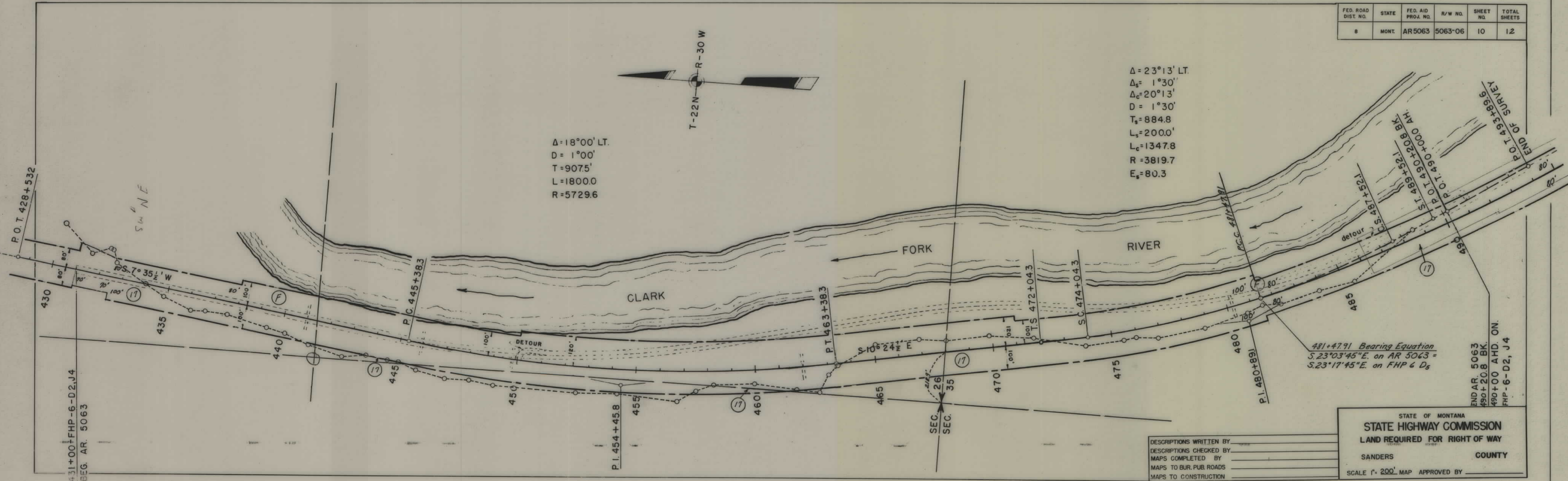
STATE OF MONTANA  
 STATE HIGHWAY COMMISSION  
 LAND REQUIRED FOR RIGHT OF WAY  
 SANDERS COUNTY  
 SCALE 1" = 200' MAP APPROVED BY \_\_\_\_\_

FED. ROAD DIST. NO.	STATE	FED. AID PROJ. NO.	R/W NO.	SHEET NO.	TOTAL SHEETS
8	MONT.	AR5063	5063-06	10	12



$\Delta = 18^{\circ}00'$  LT.  
 $D = 1^{\circ}00'$   
 $T = 9075'$   
 $L = 18000.0$   
 $R = 5729.6$

$\Delta = 23^{\circ}13'$  LT.  
 $\Delta_s = 1^{\circ}30'$   
 $\Delta_c = 20^{\circ}13'$   
 $D = 1^{\circ}30'$   
 $T_s = 884.8$   
 $L_s = 200.0'$   
 $L_c = 1347.8$   
 $R = 3819.7$   
 $E_s = 80.3$



481+47.91 Bearing Equation  
 $S. 23^{\circ}03'45'' E.$  on AR 5063 =  
 $S. 23^{\circ}17'45'' E.$  on FHP 6 D<sub>s</sub>

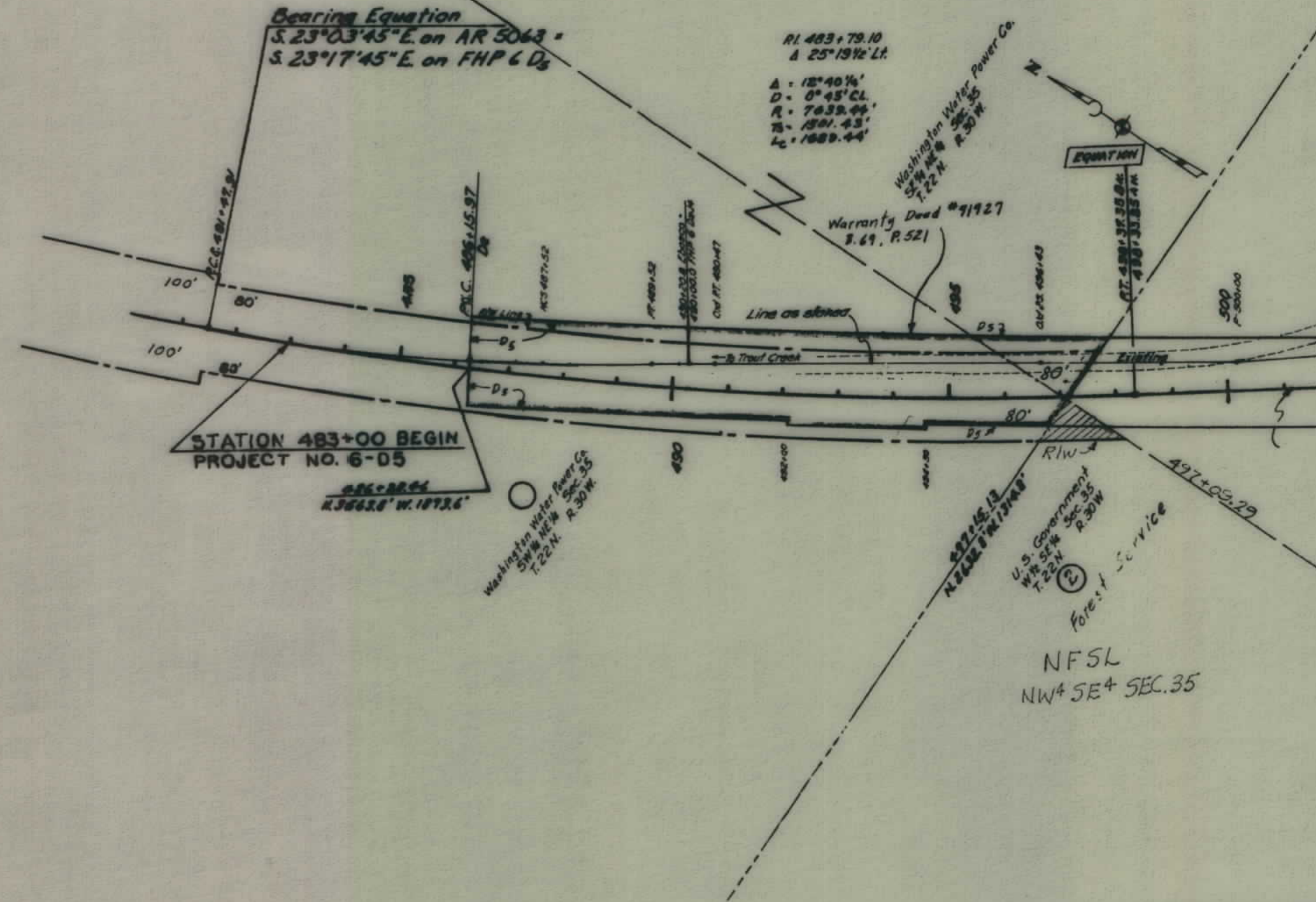
END AR. 5063  
 490+20.8 BK.  
 490+00 AHD. ON  
 FHP-6-D2, J4

DESCRIPTIONS WRITTEN BY \_\_\_\_\_  
 DESCRIPTIONS CHECKED BY \_\_\_\_\_  
 MAPS COMPLETED BY \_\_\_\_\_  
 MAPS TO BUR. PUB. ROADS \_\_\_\_\_  
 MAPS TO CONSTRUCTION \_\_\_\_\_

STATE OF MONTANA  
**STATE HIGHWAY COMMISSION**  
**LAND REQUIRED FOR RIGHT OF WAY**  
 SANDERS COUNTY  
 SCALE 1" = 200' MAP APPROVED BY \_\_\_\_\_

431+00 FHP-6-D2, J4  
 BEG. AR. 5063

FED. ROAD DIST. NO.	STATE	FED. AID PROJ. NO.	R/W NO.	SHEET NO.	TOTAL SHEETS
8	MONT.	AR5063	5063-06	11	12



MAPS MADE 13 Dec. 60  
 MAPS REVISED \_\_\_\_\_  
 MAPS TO BUR. PUB. ROADS \_\_\_\_\_  
 MAPS COMPLETED 13 Dec. 60

STATE OF MONTANA  
 STATE HIGHWAY COMMISSION  
 LAND REQUIRED FOR RIGHT OF WAY  
 SANDERS COUNTY  
 SCALE 1" = 200' MAP APPROVED BY \_\_\_\_\_

