

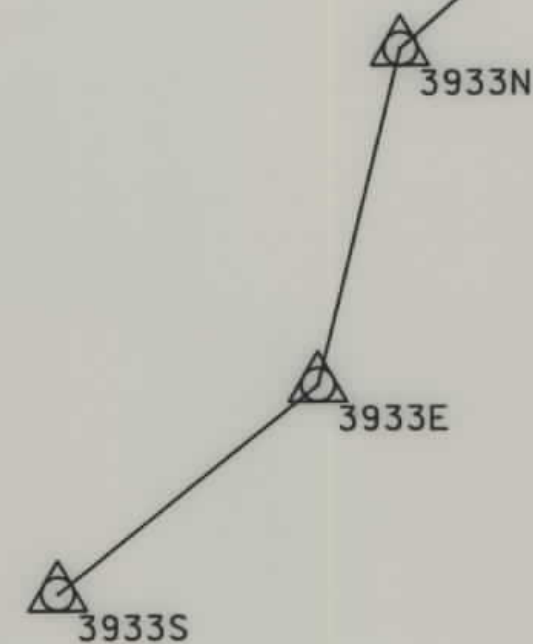
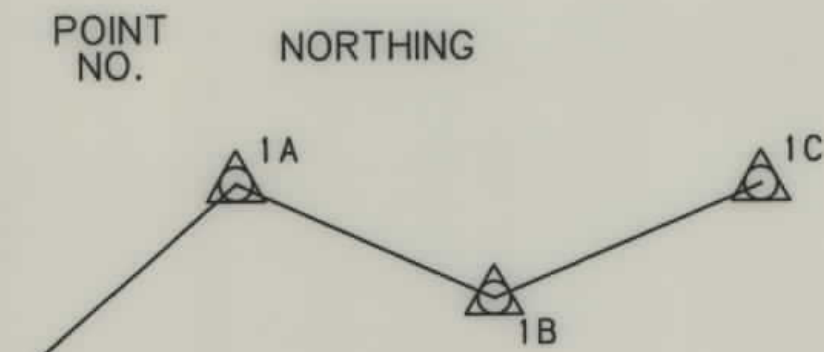
PLANS
NOT
TO
SCALE

CONTROL TRAVERSE ABSTRACT

SCALE = 1:2000

STATE	RIGHT OF WAY ID.	SHEET NO.	TOTAL SHEETS
MONTANA	NH 5203(9)	2	5
PROJECT NUMBER 3933-009			
3RD ST & SMELTER AVE SGNLS-GTF			

CONTROL TRAVERSE ABSTRACT					
POINT NUMBER	NORTHING	EASTING	STATION ELEVATION	GROUND ELEVATION	LOCATION DESCRIPTION
3933S	364710.1654	463677.0677		1012.774	51 mm AC ON 16 mm REBAR, 40 mm BELOW SIDEWALK, 50 mm BEHIND SIDEWALK. 17.4 m NORTH OF CENTERLINE OF DRIVEWAY INTO ARBYS AND K-MART.
3933E	364765.6729	463746.1814		1012.747	51 mm AC ON 16 mm REBAR, 150 mm BELOW CURB, 150 mm BEHIND CURB. 13.0 m SOUTH OF FIRE HYDRANT BY WESTERN RANCH SUPPLY.
3933N	364854.6411	463768.3605		1012.980	51 mm AC ON 16 mm REBAR, 25 mm BELOW SIDEWALK, 50 mm BEHIND SIDEWALK. 12.0 m NORTH OF CENTERLINE OF DRIVEWAY INTO BANK AND ALBERTSONS.
1A	365443.8076	464439.4119		1021.199	51 mm AC, 2 m NORTH OF NORTH CURBLINE OF SMELTER AVE., 2 m S.E. OF POWER POLE, 72 m WEST OF C/L OF 6TH ST. N.E., 14 m EAST OF CATCH BASIN.
1B	365413.2304	464507.4620		1023.036	51 mm AC, 1 m SOUTH OF SOUTH CURBLINE OF SMELTER AVE., 52 m WEST OF C/L 6TH ST. N.E., 17 m N.E. OF "LAMAR" SIGN.
1C	365443.0467	464578.1212		1024.881	51 mm AC, 2.3 m NORTH OF NORTH CURBLINE OF SMELTER AVE., 12.2 m S.W. OF "LAMAR" SIGN, 7.6 m WEST OF POWER POLE, 27 m EAST OF POWER POLE.



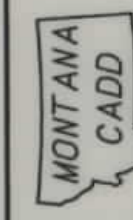
GRID STATE PLANE COORDINATES

THIS IS A STATE PLANE COORDINATE PROJECT. ALL DIMENSIONS, DISTANCES AND AREAS ON THIS PROJECT ARE GRID, EXCEPT FOR THE EXISTING R/W WIDTH DIMENSION, WHICH IS RECORD. THE COMBINATION SCALE FACTOR IS 0.99927436

- NOTES: 1. ALL MEASUREMENTS ARE METRIC EXCEPT AS NOTED
2. THE PROPOSED R/W LINE WHERE A SPIRAL CURVE TRANSITION IS USED IS A CHORD RATHER THAN A CONCENTRIC CURVE.
3. THE ENGLISH AREAS ARE FOR INFORMATIONAL PURPOSES ONLY.
4. ALL STATIONS AND OFFSETS FOR R/W BREAKS ARE IN REFERENCE TO THE R/W BASELINE.

BACKSLOPE LIMITS INCLUDE ROUNDING	TOP OF CUT
CONSTRUCTION LIMITS:	CUT SECTION
	TOE OF FILL
FHWA/DOT APPROVAL	6/28/01
MAP REVISED	

MONTANA
DEPARTMENT OF TRANSPORTATION
RIGHT OF WAY PLAN
CASCADE COUNTY



RDROW

```

.. \39333rosu001.dgn
08/14/02
12:18:54 PM
1 2 3 110725

```

[illegible]

STATE	RIGHT OF WAY ID.	SHEET	TOTAL
		NO.	SHEETS
MONTANA	NH 5203(9)	3	5
PROJECT NUMBER 3933-009			
3RD ST & SMELTER AVE SGNLS-GTF			

RIGHT-OF-WAY COORDINATE ASCII FILES
R/W BASELINE COORDS: 3933ROBAS001.TXT
ALL FILES ARE LOCATED ON THE CADD SERVER
IN THE RO DIRECTORY, UNDER PROJECT: 3933

FOR EXISTING R/W RETRACEMENT, SEE
COS #3966 FILED BY T M BROWN 11702LS

GRID STATE PLANE COORDINATES

THIS IS A STATE PLANE COORDINATE PROJECT.
ALL DIMENSIONS, DISTANCES AND AREAS ON THIS
PROJECT ARE GRID, EXCEPT FOR THE EXISTING
R/W WIDTH DIMENSION, WHICH IS RECORD. THE
COMBINATION SCALE FACTOR IS 0.99927436

NOTES: 1. ALL MEASUREMENTS ARE METRIC EXCEPT AS NOTED

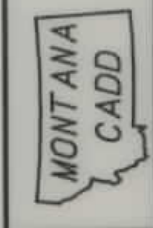
2. THE PROPOSED R/W LINE WHERE A SPIRAL CURVE TRANSITION IS USED IS A CHORD RATHER THAN A CONCENTRIC CURVE.

3. THE ENGLISH AREAS ARE FOR INFORMATIONAL PURPOSES ONLY.

4. ALL STATIONS AND OFFSETS FOR R/W BREAKS ARE IN REFERENCE TO THE R/W BASELINE.

BACKSLOPE LIMITS INCLUDE ROUNDING CONSTRUCTION LIMITS:	CUT SECTION TOE OF FILL	TOP OF DITCH BOTTOM
FHWA/DOT APPROVAL 6/28/01		
MAP REVISED		

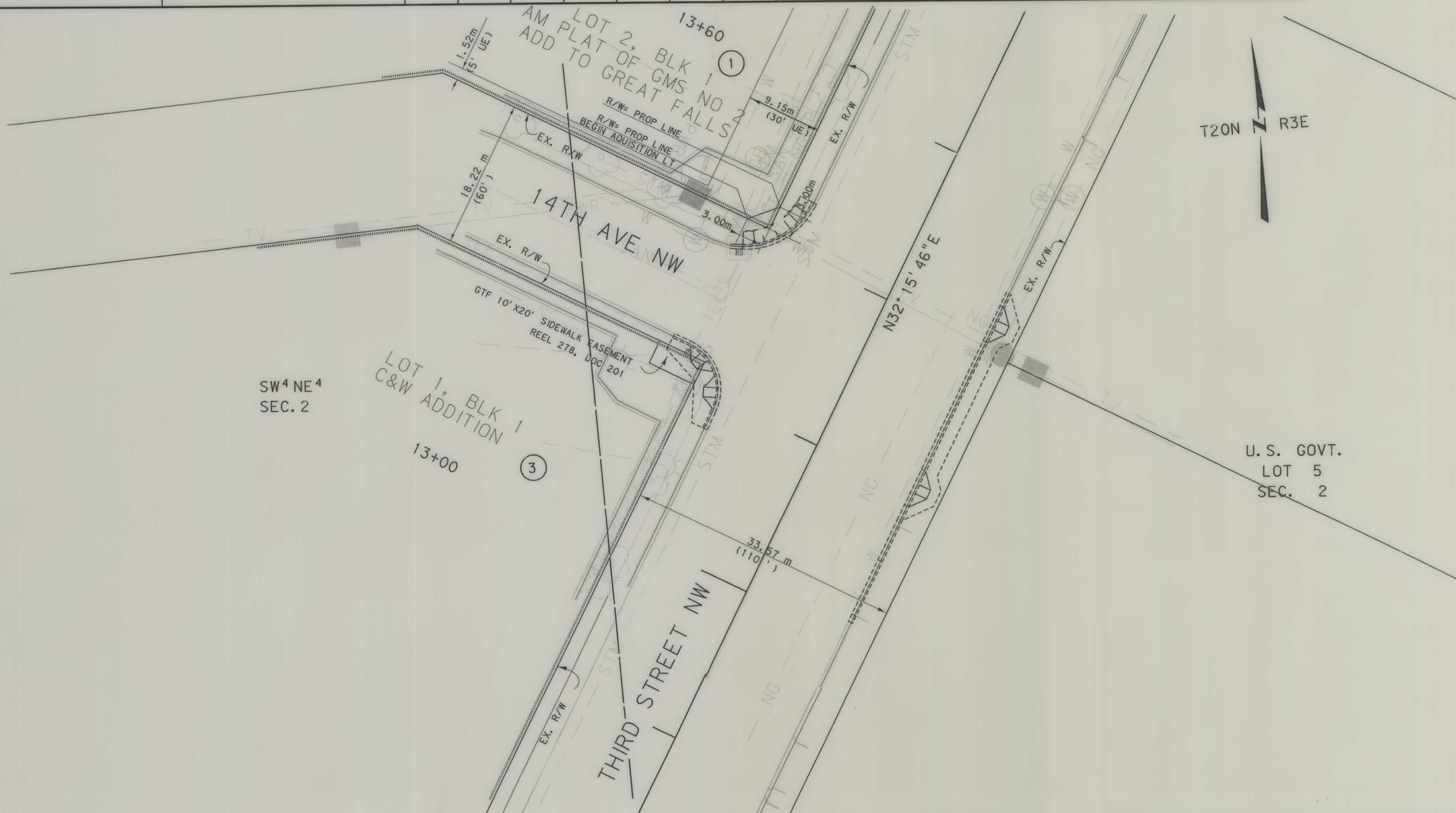
MONTANA
DEPARTMENT OF TRANSPORTATION
RIGHT OF WAY PLAN
CASCADE COUNTY



RDROW

\\3933\PROJ\N001.DGI
09/09/02
08:35:20 AM
-IN- 3-00725

OWNERSHIP																			STATE	RIGHT OF WAY ID.	SHEET NO.	TOTAL SHEETS
PARCEL	NAME	ADDRESS	TOTAL AREA		GROSS R/W AREA		EX. EASE. AREA		NET AREA		REMAINDER				CONST. PMT. AREA		EASE. AREA		SHEET NO.			
			METRIC	ENGLISH	METRIC	ENGLISH	METRIC	ENGLISH	METRIC	ENGLISH	LEFT		RIGHT		METRIC	ENGLISH	METRIC	ENGLISH				
											METRIC	ENGLISH	METRIC	ENGLISH								
1	NORWEST BANK MONTANA, N. A.	21 THIRD STREET NORTH, GREATFALLS, MT 59403-8200	3278 m²	35284 SF	5 m²	54 SF	0	0	5 m²	54 SF	3273 m²	35230SF							4			
2	DILLON REAL ESTATE	P.O. BOX 1266, HUTCHINSON, KS 67504													247 m²	2659 SF			5			
3	VOEGELE'S INC, A MONTANA CORP.	P.O. BOX 1122, GREAT FALLS, MT 59403-1112					OWNER NOTIFICATION ONLY												4			
PROJECT NUMBER 3933-009																			3RD ST & SMELTER AVE SGNLS-GTF			



GRID STATE PLANE COORDINATES

THIS IS A STATE PLANE COORDINATE PROJECT. ALL DIMENSIONS, DISTANCES AND AREAS ON THIS PROJECT ARE GRID, EXCEPT FOR THE EXISTING R/W WIDTH DIMENSION, WHICH IS RECORD. THE COMBINATION SCALE FACTOR IS 0.99927436

- NOTES:
1. ALL MEASUREMENTS ARE METRIC EXCEPT AS NOTED
 2. THE PROPOSED R/W LINE WHERE A SPIRAL CURVE TRANSITION IS USED IS A CHORD RATHER THAN A CONCENTRIC CURVE.
 3. THE ENGLISH AREAS ARE FOR INFORMATIONAL PURPOSES ONLY.
 4. ALL STATIONS AND OFFSETS FOR R/W BREAKS ARE IN REFERENCE TO THE R/W BASELINE.

BACKSLOPE LIMITS INCLUDE ROUNDING	
CONSTRUCTION LIMITS:	
CUT SECTION	TOP OF CUT
TOE OF FILL	DITCH BOTTOM
FHWA/DOT APPROVAL 6/28/01	
MAP REVISED 1/29/02	

MONTANA
DEPARTMENT OF TRANSPORTATION

RIGHT OF WAY PLAN
CASCADE COUNTY
SCALE 1"=250'

0 12.5M 25M

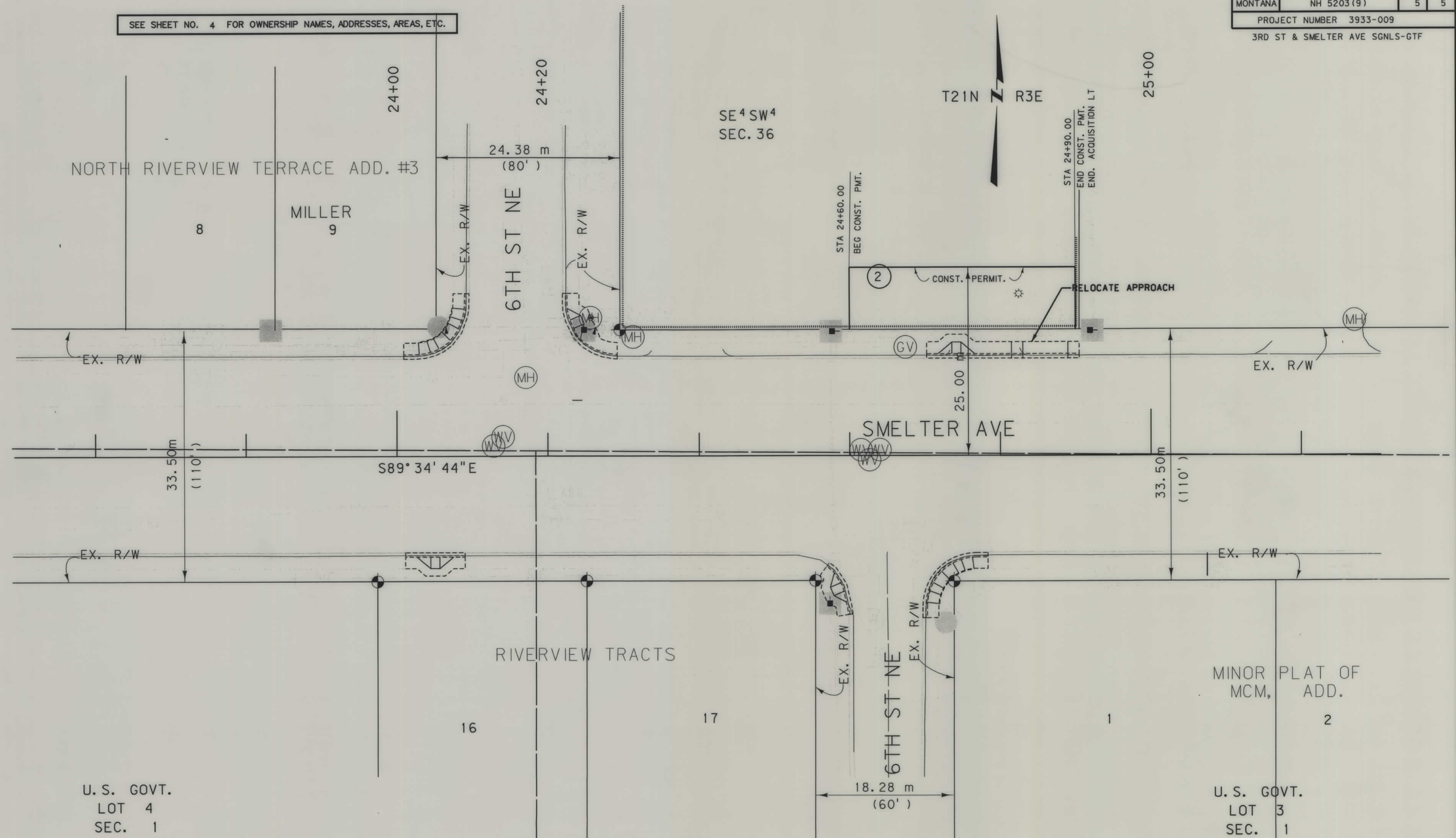


RDROW

3933-001.dgn
08/14/02
12:18:58 PM
-IN- 00725

SEE SHEET NO. 4 FOR OWNERSHIP NAMES, ADDRESSES, AREAS, ETC.

STATE	RIGHT OF WAY ID.	SHEET	TOTAL
		NO.	SHEETS
MONTANA	NH 5203 (9)	5	5
PROJECT NUMBER 3933-009			
3RD ST & SMELTER AVE SGNLS-GTF			



FOR EXISTING R/W RETRACEMENT, SEE
COS #3966 FILED BY T M BROWN 11702LS

GRID STATE PLANE COORDINATES
THIS IS A STATE PLANE COORDINATE PROJECT.
ALL DIMENSIONS, DISTANCES AND AREAS ON THIS
PROJECT ARE GRID, EXCEPT FOR THE EXISTING
R/W WIDTH DIMENSION, WHICH IS RECORD. THE
COMBINATION SCALE FACTOR IS 0.99927436

- NOTES:
1. ALL MEASUREMENTS ARE METRIC EXCEPT AS NOTED
 2. THE PROPOSED R/W LINE WHERE A SPIRAL CURVE TRANSITION IS USED IS A CHORD RATHER THAN A CONCENTRIC CURVE.
 3. THE ENGLISH AREAS ARE FOR INFORMATIONAL PURPOSES ONLY.
 4. ALL STATIONS AND OFFSETS FOR R/W BREAKS ARE IN REFERENCE TO THE R/W BASELINE.

BACKSLOPE LIMITS INCLUDE ROUNDING	
CONSTRUCTION LIMITS:	CUT SECTION TOE OF FILL
FHWA/DOT APPROVAL	6/28/01
MAP REVISED	

MONTANA DEPARTMENT OF TRANSPORTATION	
RIGHT OF WAY PLAN CASCADE COUNTY	
SCALE 1:250	
0 12.5M 25M	